

Anti-Ferritin, Light Chain (FTL) (Microglia Marker) Antibody
Mouse Monoclonal Antibody
Catalog # AH13253**Specification****Anti-Ferritin, Light Chain (FTL) (Microglia Marker) Antibody - Product Information**

Application	,14,3,4,
Primary Accession	P02792
Other Accession	433670
Reactivity	Human
Host	Mouse
Clonality	Monoclonal
Isotype	Mouse / IgG2a
Calculated MW	20020

Anti-Ferritin, Light Chain (FTL) (Microglia Marker) Antibody - Additional Information**Gene ID** 2512**Other Names**

Ferritin L chain; Ferritin L subunit; Ferritin light chain; Ferritin light polypeptide; FTL; LFTD; NBIA3

Format

200ug/ml of Ab purified from Bioreactor Concentrate by Protein A/G. Prepared in 10mM PBS with 0.05% BSA & 0.05% azide. Also available WITHOUT BSA & azide at 1.0mg/ml.

Storage

Store at 2 to 8°C. Antibody is stable for 24 months.

Precautions

Anti-Ferritin, Light Chain (FTL) (Microglia Marker) Antibody is for research use only and not for use in diagnostic or therapeutic procedures.

Anti-Ferritin, Light Chain (FTL) (Microglia Marker) Antibody - Protein Information**Name** FTL**Function**Stores iron in a soluble, non-toxic, readily available form. Important for iron homeostasis. Iron is taken up in the ferrous form and deposited as ferric hydroxides after oxidation. Also plays a role in delivery of iron to cells. Mediates iron uptake in capsule cells of the developing kidney (By similarity). Delivery to lysosomes by the cargo receptor NCOA4 for autophagic degradation and release of iron (PubMed: <http://www.uniprot.org/citations/24695223> target="_blank">24695223).**Cellular Location**

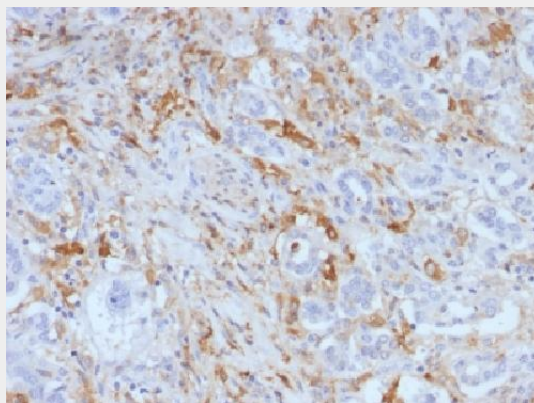
Cytoplasmic vesicle, autophagosome. Cytoplasm {ECO:0000250|UniProtKB:P29391}. Autolysosome {ECO:0000250|UniProtKB:P29391}

Anti-Ferritin, Light Chain (FTL) (Microglia Marker) Antibody - Protocols

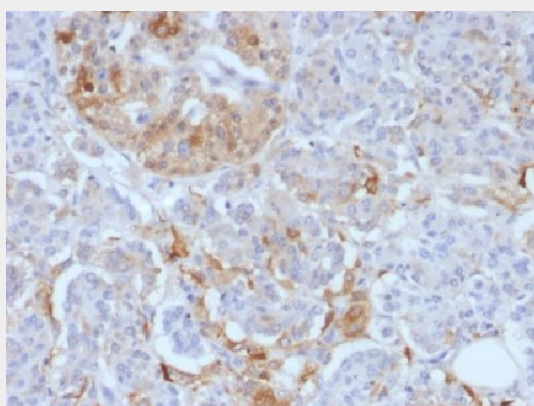
Provided below are standard protocols that you may find useful for product applications.

- [Western Blot](#)
- [Blocking Peptides](#)
- [Dot Blot](#)
- [Immunohistochemistry](#)
- [Immunofluorescence](#)
- [Immunoprecipitation](#)
- [Flow Cytometry](#)
- [Cell Culture](#)

Anti-Ferritin, Light Chain (FTL) (Microglia Marker) Antibody - Images



Formalin-fixed, paraffin-embedded Human Pancreas stained with Ferritin, Light Chain Monoclonal Antibody (FTL/1388).



Formalin-fixed, paraffin-embedded Human Pancreas stained with Ferritin, Light Chain Monoclonal Antibody (FTL/1388).

Anti-Ferritin, Light Chain (FTL) (Microglia Marker) Antibody - Background

Mammalian ferritins consist of 24 subunits made up of 2 types of polypeptide chains, ferritin heavy chain and ferritin light chain. Ferritin heavy chains catalyze the first step in iron storage, the oxidation of Fe (II), whereas ferritin light chains promote the nucleation of ferrihydrite, enabling storage of Fe (III). Light chain ferritin is involved in cataracts by at least two mechanisms, hereditary hyperferritinemia cataract syndrome, in which light chain ferritin is overexpressed, and

oxidative stress, an important factor in the development of ageing-related cataracts.