

**Anti-ETS1 / Antibody**  
**Mouse Monoclonal Antibody**  
**Catalog # AH13204****Specification**

---

**Anti-ETS1 / Antibody - Product Information**

Application	,1,14,3,4,
Primary Accession	<a href="#">P14921</a>
Other Accession	<a href="#">369438</a>
Reactivity	Human
Host	Mouse
Clonality	Monoclonal
Isotype	Mouse / IgG
Calculated MW	50408

**Anti-ETS1 / Antibody - Additional Information****Gene ID** 2113**Other Names**

Avian erythroblastosis virus E26 (v ets) oncogene homolog 1; ETS1; EWSR2; p54; v-ets erythroblastosis virus E26 oncogene homolog 1

**Format**

200ug/ml of Ab purified from Bioreactor Concentrate by Protein A/G. Prepared in 10mM PBS with 0.05% BSA &amp; 0.05% azide. Also available WITHOUT BSA &amp; azide at 1.0mg/ml.

**Storage**

Store at 2 to 8°C. Antibody is stable for 24 months.

**Precautions**

Anti-ETS1 / Antibody is for research use only and not for use in diagnostic or therapeutic procedures.

**Anti-ETS1 / Antibody - Protein Information****Name** ETS1**Synonyms** EWSR2**Function**Transcription factor (PubMed: [10698492](http://www.uniprot.org/citations/10698492), PubMed: [11909962](http://www.uniprot.org/citations/11909962)). Directly controls the expression of cytokine and chemokine genes in a wide variety of different cellular contexts (PubMed: [20378371](http://www.uniprot.org/citations/20378371)). May control the differentiation, survival and proliferation of lymphoid cells (PubMed: [20378371](http://www.uniprot.org/citations/20378371)). May also

regulate angiogenesis through regulation of expression of genes controlling endothelial cell migration and invasion (PubMed:<a href="http://www.uniprot.org/citations/15247905" target="\_blank">15247905</a>, PubMed:<a href="http://www.uniprot.org/citations/15592518" target="\_blank">15592518</a>).

#### **Cellular Location**

Nucleus. Cytoplasm Note=Delocalizes from nucleus to cytoplasm when coexpressed with isoform Ets-1 p27.

#### **Tissue Location**

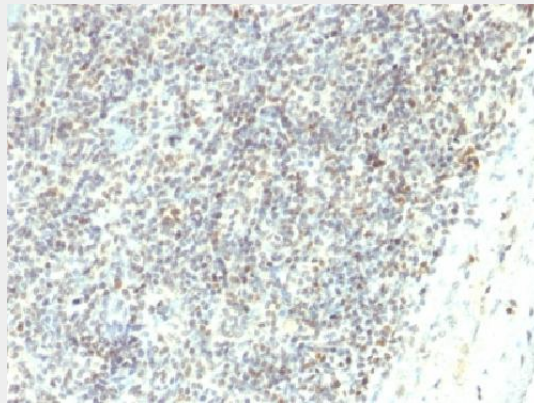
Highly expressed within lymphoid cells. Isoforms c- ETS-1A and Ets-1 p27 are both detected in all fetal tissues tested, but vary with tissue type in adult tissues. None is detected in brain or kidney.

### **Anti-ETS1 / Antibody - Protocols**

Provided below are standard protocols that you may find useful for product applications.

- [Western Blot](#)
- [Blocking Peptides](#)
- [Dot Blot](#)
- [Immunohistochemistry](#)
- [Immunofluorescence](#)
- [Immunoprecipitation](#)
- [Flow Cytometry](#)
- [Cell Culture](#)

### **Anti-ETS1 / Antibody - Images**



Formalin-fixed, paraffin-embedded human Spleen stained with ETS1 Monoclonal Antibody (ETS1/1282).

### **Anti-ETS1 / Antibody - Background**

ETS1 proto-oncogene is an important transcription factor that plays a role in cell proliferation and differentiation. ETS1 is related to the growth of carcinoma cells by its regulation of the transcription of matrix metalloproteinases and urokinase-type plasminogen activator. The processes of tumor invasion and metastasis depend on the increased proteolytic activity of the invading tumor cells that may involve matrix metalloproteinases, cathepsins B and D and plasminogen activator in the metastatic cascade. ETS1 is preferentially expressed in lymphoid cells, where it is essential for the maintenance of the normal pool of resting T and B cells. ETS1 expression level and distribution are differentially controlled in resting, activated and apoptotic lymphocytes.