

Anti-Adipophilin / Perilipin-2 (Marker of Obesity) Antibody
Mouse Monoclonal Antibody
Catalog # AH13123

Specification

Anti-Adipophilin / Perilipin-2 (Marker of Obesity) Antibody - Product Information

Application	,1,3,4,
Primary Accession	O99541
Other Accession	3416
Reactivity	Human
Host	Mouse
Clonality	Monoclonal
Isotype	Mouse / IgG1, kappa
Calculated MW	48075

Anti-Adipophilin / Perilipin-2 (Marker of Obesity) Antibody - Additional Information

Gene ID 123

Other Names

Adipophilin; ADFP; Adipose differentiation-related protein (ADRP); Perilipin-2 (PLIN2)

Format

200ug/ml of Ab purified from Bioreactor Concentrate by Protein A/G. Prepared in 10mM PBS with 0.05% BSA & 0.05% azide. Also available WITHOUT BSA & azide at 1.0mg/ml.

Storage

Store at 2 to 8°C. Antibody is stable for 24 months.

Precautions

Anti-Adipophilin / Perilipin-2 (Marker of Obesity) Antibody is for research use only and not for use in diagnostic or therapeutic procedures.

Anti-Adipophilin / Perilipin-2 (Marker of Obesity) Antibody - Protein Information

Name PLIN2 ([HGNC:248](#))

Synonyms ADFP

Function

Structural component of lipid droplets, which is required for the formation and maintenance of lipid storage droplets.

Cellular Location

Membrane {ECO:0000250|UniProtKB:P43883}; Peripheral membrane protein {ECO:0000250|UniProtKB:P43883}. Lipid droplet

Tissue Location

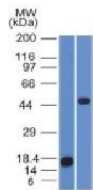
Milk lipid globules..

Anti-Adipophilin / Perilipin-2 (Marker of Obesity) Antibody - Protocols

Provided below are standard protocols that you may find useful for product applications.

- [Western Blot](#)
- [Blocking Peptides](#)
- [Dot Blot](#)
- [Immunohistochemistry](#)
- [Immunofluorescence](#)
- [Immunoprecipitation](#)
- [Flow Cytometry](#)
- [Cell Culture](#)

Anti-Adipophilin / Perilipin-2 (Marker of Obesity) Antibody - Images



Western Blot of recombinant Adipophilin and Jurkat Cell Lysate using Adipophilin Monoclonal Antibody (ADFP/1365).



Flow Cytometry of human Adipophilin on PBMC. Green: Isotype Control; Red: Adipophilin Monoclonal Antibody (ADFP/1365).

Anti-Adipophilin / Perilipin-2 (Marker of Obesity) Antibody - Background

Recognizes a protein of 48kDa, which is identified as Adipophilin. It belongs to the perilipin family, members of which coat intracellular lipid storage droplets. This protein is associated with the lipid globule surface membrane material, and maybe involved in development and maintenance of

adipose tissue. However, it is not restricted to adipocytes as previously thought, but is found in a wide range of cultured cell lines, including fibroblasts, endothelial and epithelial cells, and tissues, such as lactating mammary gland, adrenal cortex, Sertoli and Leydig cells, and hepatocytes in alcoholic liver cirrhosis, suggesting that it may serve as a marker of lipid accumulation in diverse cell types and diseases.