

Anti-Chromogranin A / CHGA Antibody
Rabbit Polyclonal Antibody
Catalog # AH13115

Specification

Anti-Chromogranin A / CHGA Antibody - Product Information

Application	,14,3,4,
Primary Accession	P10645
Other Accession	150793
Reactivity	Human
Host	Rabbit
Clonality	Polyclonal
Isotype	Rabbit / IgG, kappa
Calculated MW	50688

Anti-Chromogranin A / CHGA Antibody - Additional Information

Gene ID 1113

Other Names

Beta-Granin; CGA; CHGA; Chromogranin A Parathyroid Secretory Protein 1; ER-37; Pancreastatin; Parastatin; Parathyroid Secretory Protein 1; Pituitary Secretory Protein I; SP-I; Vasostatin I or II

Format

200ug/ml of Ab purified by Protein A. Prepared in 10mM PBS with 0.05% BSA & 0.05% azide. Also available WITHOUT BSA & azide at 1.0mg/ml.

Storage

Store at 2 to 8°C. Antibody is stable for 24 months.

Precautions

Anti-Chromogranin A / CHGA Antibody is for research use only and not for use in diagnostic or therapeutic procedures.

Anti-Chromogranin A / CHGA Antibody - Protein Information

Name CHGA

Function

[Pancreastatin]: Strongly inhibits glucose induced insulin release from the pancreas. [Serpinin]: Regulates granule biogenesis in endocrine cells by up-regulating the transcription of protease nexin 1 (SERPINE2) via a cAMP-PKA-SP1 pathway. This leads to inhibition of granule protein degradation in the Golgi complex which in turn promotes granule formation.

Cellular Location

[Serpinin]: Secreted {ECO:0000250|UniProtKB:P26339}. Cytoplasmic vesicle, secretory vesicle {ECO:0000250|UniProtKB:P26339}. Note=Pyroglutaminated serpinin localizes to secretory vesicle. {ECO:0000250|UniProtKB:P26339}

Tissue Location

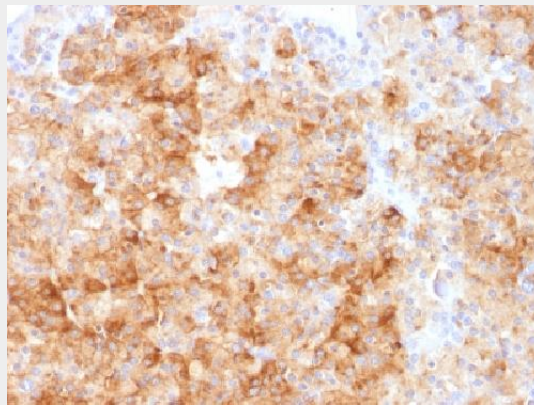
Detected in cerebrospinal fluid (at protein level) (PubMed:25326458). Detected in urine (at protein level) (PubMed:37453717).

Anti-Chromogranin A / CHGA Antibody - Protocols

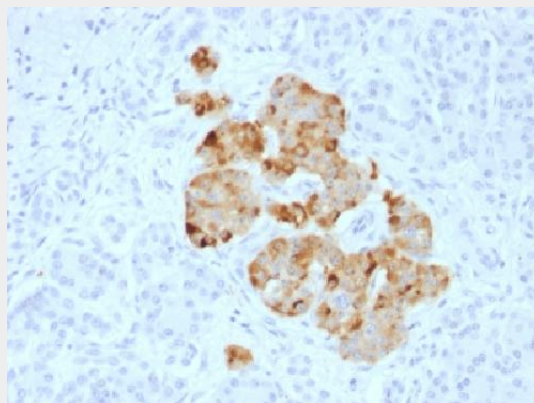
Provided below are standard protocols that you may find useful for product applications.

- [Western Blot](#)
- [Blocking Peptides](#)
- [Dot Blot](#)
- [Immunohistochemistry](#)
- [Immunofluorescence](#)
- [Immunoprecipitation](#)
- [Flow Cytometry](#)
- [Cell Culture](#)

Anti-Chromogranin A / CHGA Antibody - Images



Formalin-fixed, paraffin-embedded human Parathyroid stained with Chromogranin A Rabbit Polyclonal Antibody



Formalin-fixed, paraffin-embedded human Pancreas stained with Chromogranin A Rabbit Polyclonal Antibody

Anti-Chromogranin A / CHGA Antibody - Background

Chromogranin A is present in neuroendocrine cells throughout the body, including the neuroendocrine cells of the large and small intestine, adrenal medulla and pancreatic islets. It is an

excellent marker for carcinoid tumors, pheochromocytomas, paragangliomas, and other neuroendocrine tumors. Co-expression of chromogranin A and neuron specific enolase (NSE) is common in neuroendocrine neoplasms. Reportedly, co-expression of certain keratins and chromogranin indicates neuroendocrine lineage. The presence of strong anti-chromogranin staining and absence of anti-keratin staining should raise the possibility of paraganglioma. The co-expression of chromogranin and NSE is typical of neuroendocrine neoplasms. Most pituitary adenomas and prolactinomas readily express chromogranin.