

Cytokeratin, Multi (Epithelial Marker) Antibody - With BSA and Azide
Mouse Monoclonal Antibody [Clone KRT/457]
Catalog # AH12920

Specification

Cytokeratin, Multi (Epithelial Marker) Antibody - With BSA and Azide - Product Information

Application	,1,14,3,4,
Primary Accession	P02538
Other Accession	3851 (CK4) , 3852 (CK5) , 3853 (CK6A) , 3854 (CK6B) , 286887 (CK6C) , 3856 (CK8) , 3858 (CK10) , 3860 (CK13) , 3875 (CK18) (Human) , P04259 (CK6B) , P13647 (CK5) , P19013 (CK4) , P48668 (CK6C)
Reactivity	Human, Mouse, Rat, Monkey, Pig, Goat, Bovine, Guinea Pig
Host	Mouse
Clonality	Monoclonal
Isotype	Mouse / IgG1
Calculated MW	Multiple KDa

Cytokeratin, Multi (Epithelial Marker) Antibody - With BSA and Azide - Additional Information

Gene ID 3853

Other Names

Keratin, type II cytoskeletal 6A, Cytokeratin-6A, CK-6A, Cytokeratin-6D, CK-6D, Keratin-6A, K6A, Type-II keratin Kb6, Hom s 5, KRT6A, K6A, KRT6D

Storage

Store at 2 to 8°C. Antibody is stable for 24 months.

Precautions

Cytokeratin, Multi (Epithelial Marker) Antibody - With BSA and Azide is for research use only and not for use in diagnostic or therapeutic procedures.

Cytokeratin, Multi (Epithelial Marker) Antibody - With BSA and Azide - Protein Information

Name KRT6A

Synonyms K6A, KRT6D

Function

Epidermis-specific type I keratin involved in wound healing. Involved in the activation of follicular keratinocytes after wounding, while it does not play a major role in keratinocyte proliferation or migration. Participates in the regulation of epithelial migration by inhibiting the activity of SRC

during wound repair.

Tissue Location

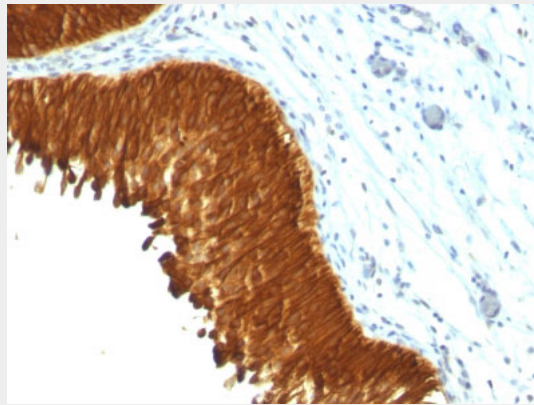
Expressed in the corneal epithelium (at protein level).

Cytokeratin, Multi (Epithelial Marker) Antibody - With BSA and Azide - Protocols

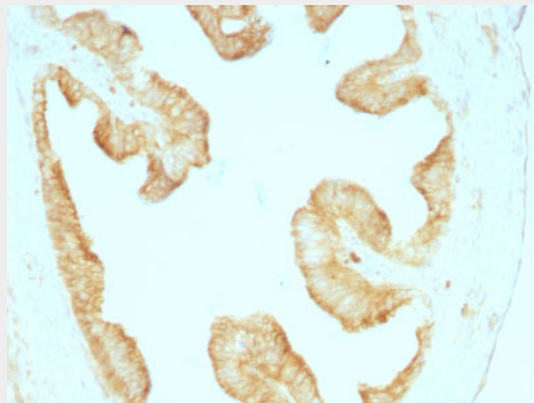
Provided below are standard protocols that you may find useful for product applications.

- [Western Blot](#)
- [Blocking Peptides](#)
- [Dot Blot](#)
- [Immunohistochemistry](#)
- [Immunofluorescence](#)
- [Immunoprecipitation](#)
- [Flow Cytometry](#)
- [Cell Culture](#)

Cytokeratin, Multi (Epithelial Marker) Antibody - With BSA and Azide - Images



Formalin-fixed, paraffin-embedded human Bladder Carcinoma stained with Multi Cytokeratin Monoclonal Antibody (KRT/457).



Formalin-fixed, paraffin-embedded Rat Oviduct stained with Multi Cytokeratin Monoclonal Antibody (KRT/457).

Cytokeratin, Multi (Epithelial Marker) Antibody - With BSA and Azide - Background

Twenty human keratins are resolved with two-dimensional gel electrophoresis into acidic (pI 6.0)

subfamilies. This antibody recognizes acidic (Type I or LMW) and basic (Type II or HMW) cytokeratins, including 59kDa (CK4); 58kDa (CK5); 56kDa (CK6); 52kDa (CK8); 56.5kDa (CK10); 53kDa (CK13) and 45kDa (CK18). This is a broad-spectrum antibody, which has been reported to differentiate epithelial tumors from non-epithelial tumors. Many studies have shown the usefulness of keratins as markers in cancer research and tumor diagnosis.

Cytokeratin, Multi (Epithelial Marker) Antibody - With BSA and Azide - References

Bartek J et. al. J Pathol, 1991, 164(3):215-24. ,Kasper M. Histochemistry, 1991, 95(6):613-20