

Cytokeratin 5/8 Antibody - With BSA and Azide
Mouse Monoclonal Antibody [Clone SPM268]
Catalog # AH12917

Specification

Cytokeratin 5/8 Antibody - With BSA and Azide - Product Information

Application	,1,14,3,4,
Primary Accession	P13647
Other Accession	3852 (CK5) , 3856 (CK8) , 433845 (CK5) , 533782 , 708445 (CK8) , P05787 (CK8)
Reactivity	Human, Mouse, Rat, Hamster, Pig, Bovine, Sheep, Dog
Host	Mouse
Clonality	Monoclonal
Isotype	Mouse / IgG1, kappa
Calculated MW	58kDa (CK5); 52.5kDa (CK8) KDa

Cytokeratin 5/8 Antibody - With BSA and Azide - Additional Information

Gene ID 3852

Other Names

Keratin, type II cytoskeletal 5, 58 kDa cytoke­ratin, Cytokeratin-5, CK-5, Keratin-5, K5, Type-II keratin Kb5, KRT5

Storage

Store at 2 to 8°C. Antibody is stable for 24 months.

Precautions

Cytokeratin 5/8 Antibody - With BSA and Azide is for research use only and not for use in diagnostic or therapeutic procedures.

Cytokeratin 5/8 Antibody - With BSA and Azide - Protein Information

Name KRT5

Function

Required for the formation of keratin intermediate filaments in the basal epidermis and maintenance of the skin barrier in response to mechanical stress (By similarity). Regulates the recruitment of Langerhans cells to the epidermis, potentially by modulation of the abundance of macrophage chemotactic cytokines, macrophage inflammatory cytokines and CTNND1 localization in keratinocytes (By similarity).

Cellular Location

Cytoplasm.

Tissue Location

Expressed in corneal epithelium (at protein level) (PubMed:26758872). Expressed in keratinocytes

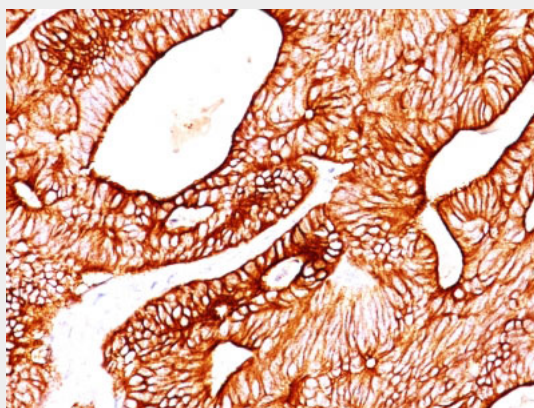
(at protein level) (PubMed:20128788, PubMed:31302245).

Cytokeratin 5/8 Antibody - With BSA and Azide - Protocols

Provided below are standard protocols that you may find useful for product applications.

- [Western Blot](#)
- [Blocking Peptides](#)
- [Dot Blot](#)
- [Immunohistochemistry](#)
- [Immunofluorescence](#)
- [Immunoprecipitation](#)
- [Flow Cytometry](#)
- [Cell Culture](#)

Cytokeratin 5/8 Antibody - With BSA and Azide - Images



Formalin-fixed, paraffin-embedded human Colon Carcinoma stained with Cytokeratin 5/8 Monoclonal Antibody (SPM268).

Cytokeratin 5/8 Antibody - With BSA and Azide - Background

It reacts with keratin 5 (58kDa) and keratin 8 (52.5kDa). Simple epithelia express cytoke­ratin 8 in combination with 18. On the other hand, basal cells of stratified epithelia express cytoke­ratin 5 paired with 14. This antibody therefore, reacts with a wide range of epithelia and their carcinomas.

Cytokeratin 5/8 Antibody - With BSA and Azide - References

Vojtěšek et al. Folia Biol. 37(3-4): 197-206 (1991). | Bartkova et al. Neoplasma 38(4), 439-46 (1991). | Bartek et al. J. of Pathology 164, 215-24 (1991). | Kovařík et al. J. Tumor Marker Oncol. 5, 219 (1990). |