

CD68 (Macrophage Marker) Antibody - With BSA and Azide
Mouse Monoclonal Antibody [Clone CD68/G2]
Catalog # AH12798

Specification

CD68 (Macrophage Marker) Antibody - With BSA and Azide - Product Information

Application	,2,3,4,
Primary Accession	P34810
Other Accession	968 , 647419
Reactivity	Human
Host	Mouse
Clonality	Monoclonal
Isotype	Mouse / IgG1, kappa
Calculated MW	110kDa KDa

CD68 (Macrophage Marker) Antibody - With BSA and Azide - Additional Information

Gene ID 968

Other Names

Macrosialin, Gp110, CD68, CD68

Storage

Store at 2 to 8°C. Antibody is stable for 24 months.

Precautions

CD68 (Macrophage Marker) Antibody - With BSA and Azide is for research use only and not for use in diagnostic or therapeutic procedures.

CD68 (Macrophage Marker) Antibody - With BSA and Azide - Protein Information

Name CD68

Function

Could play a role in phagocytic activities of tissue macrophages, both in intracellular lysosomal metabolism and extracellular cell-cell and cell-pathogen interactions. Binds to tissue- and organ-specific lectins or selectins, allowing homing of macrophage subsets to particular sites. Rapid recirculation of CD68 from endosomes and lysosomes to the plasma membrane may allow macrophages to crawl over selectin-bearing substrates or other cells.

Cellular Location

[Isoform Short]: Cell membrane; Single-pass type I membrane protein

Tissue Location

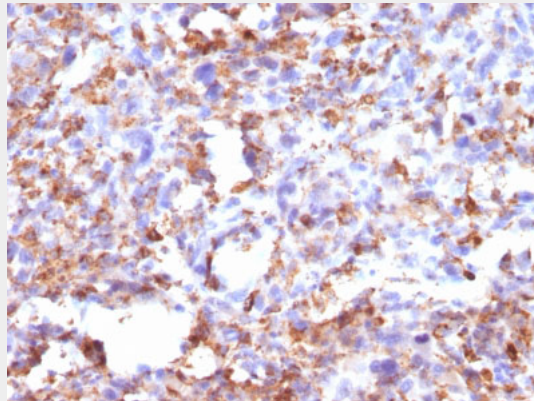
Highly expressed by blood monocytes and tissue macrophages. Also expressed in lymphocytes, fibroblasts and endothelial cells. Expressed in many tumor cell lines which could allow them to attach to selectins on vascular endothelium, facilitating their dissemination to secondary sites.

CD68 (Macrophage Marker) Antibody - With BSA and Azide - Protocols

Provided below are standard protocols that you may find useful for product applications.

- [Western Blot](#)
- [Blocking Peptides](#)
- [Dot Blot](#)
- [Immunohistochemistry](#)
- [Immunofluorescence](#)
- [Immunoprecipitation](#)
- [Flow Cytometry](#)
- [Cell Culture](#)

CD68 (Macrophage Marker) Antibody - With BSA and Azide - Images



Formalin-fixed, paraffin-embedded human Histiocytoma stained with CD68 Monoclonal Antibody (CD68/G2).

CD68 (Macrophage Marker) Antibody - With BSA and Azide - Background

This antibody recognizes a glycoprotein of 110kDa, which is identified as CD68. It is important for identifying macrophages in tissue sections. It stains macrophages in a wide variety of human tissues, including Kupffer cells and macrophages in the red pulp of the spleen, in lamina propria of the gut, in lung alveoli, and in bone marrow. It reacts with myeloid precursors and peripheral blood granulocytes. It also reacts with plasmacytoid T cells, which are supposed to be of monocyte/macrophage origin. It shows strong granular cytoplasmic staining of chronic and acute myeloid leukemia and also reacts with rare cases of true histiocytic neoplasia. Lymphomas are negative or show few granules.

CD68 (Macrophage Marker) Antibody - With BSA and Azide - References

Holness, C.L. and Simmons, D.L. 1993. Molecular cloning of CD68, a human macrophage marker related to lysosomal glycoproteins. *Blood* 81: 1607-1613