

**Napsin A (Lung Adenocarcinoma Marker) Antibody - With BSA and Azide**  
**Mouse Monoclonal Antibody [Clone NAPSA/1239 ]**  
**Catalog # AH12717**

**Specification**

---

**Napsin A (Lung Adenocarcinoma Marker) Antibody - With BSA and Azide - Product Information**

Application	,1,2,3,4,
Primary Accession	<a href="#">O96009</a>
Other Accession	<a href="#">9476</a> , <a href="#">512843</a>
Reactivity	Human
Host	Mouse
Clonality	Monoclonal
Isotype	Mouse / IgG, kappa
Calculated MW	37kDa KDa

**Napsin A (Lung Adenocarcinoma Marker) Antibody - With BSA and Azide - Additional Information**

**Gene ID** 9476

**Other Names**

Napsin-A, 3.4.23.-, Aspartyl protease 4, ASP4, Asp 4, Napsin-1, TA01/TA02, NAPSA, NAP1, NAPA

**Storage**

Store at 2 to 8°C. Antibody is stable for 24 months.

**Precautions**

Napsin A (Lung Adenocarcinoma Marker) Antibody - With BSA and Azide is for research use only and not for use in diagnostic or therapeutic procedures.

**Napsin A (Lung Adenocarcinoma Marker) Antibody - With BSA and Azide - Protein Information**

**Name** NAPSA

**Synonyms** NAP1, NAPA

**Function**

May be involved in processing of pneumocyte surfactant precursors.

**Cellular Location**

Secreted.

**Tissue Location**

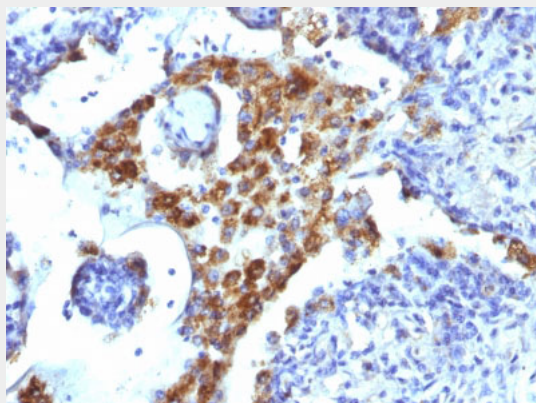
Expressed predominantly in adult lung (type II pneumocytes) and kidney and in fetal lung. Low levels in adult spleen and very low levels in peripheral blood leukocytes

## Napsin A (Lung Adenocarcinoma Marker) Antibody - With BSA and Azide - Protocols

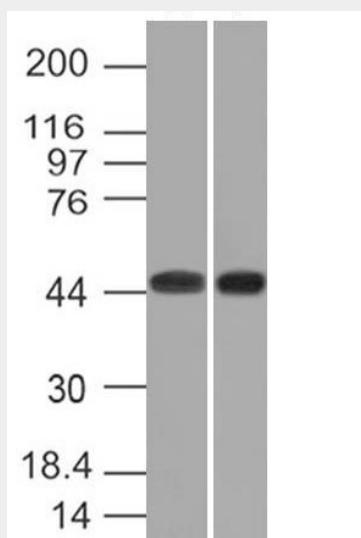
Provided below are standard protocols that you may find useful for product applications.

- [Western Blot](#)
- [Blocking Peptides](#)
- [Dot Blot](#)
- [Immunohistochemistry](#)
- [Immunofluorescence](#)
- [Immunoprecipitation](#)
- [Flow Cytometry](#)
- [Cell Culture](#)

## Napsin A (Lung Adenocarcinoma Marker) Antibody - With BSA and Azide - Images



Formalin-fixed, paraffin-embedded human Lung Adenocarcinoma stained with Napsin-A Monoclonal Antibody (NAPSA/1239).



Western Blot of K562 and HEK293 Cell Lysates using Napsin-A Monoclonal Antibody (NAPSA/1239)

## Napsin A (Lung Adenocarcinoma Marker) Antibody - With BSA and Azide - Background

Napsin is a pepsin-like aspartic proteinase connected with maturation of surfactant protein B. There are two closely related napsins, napsin A and napsin B. Napsin A is expressed as a single

chain protein. Immunohistochemical studies revealed high expression levels of napsin A in human lung and kidney but low expression in spleen. Napsin A is expressed in type II pneumocytes and in adenocarcinomas of lung. The high specificity expression of napsin A in adenocarcinomas of lung is useful to distinguish primary lung adenocarcinomas from adenocarcinomas of other organs.

#### **Napsin A (Lung Adenocarcinoma Marker) Antibody - With BSA and Azide - References**

Bishop, JA et. al. Hum Pathol 41: 20-25 | Ordonez, NG 2012 Adv Anat Pathol 19: 66-73 | Ye, J et. al. Appl Immunohistochem Mol Morphol 19: 313-31