

Napsin A (Lung Adenocarcinoma Marker) Antibody - With BSA and Azide
Mouse Monoclonal Antibody [Clone NAPSA/1238]
Catalog # AH12714

Specification

Napsin A (Lung Adenocarcinoma Marker) Antibody - With BSA and Azide - Product Information

Application	,1,2,3,4,
Primary Accession	O96009
Other Accession	9476 , 512843
Reactivity	Human
Host	Mouse
Clonality	Monoclonal
Isotype	Mouse / IgG, kappa
Calculated MW	37kDa KDa

Napsin A (Lung Adenocarcinoma Marker) Antibody - With BSA and Azide - Additional Information

Gene ID 9476

Other Names

Napsin-A, 3.4.23.-, Aspartyl protease 4, ASP4, Asp 4, Napsin-1, TA01/TA02, NAPSA, NAP1, NAPA

Storage

Store at 2 to 8°C. Antibody is stable for 24 months.

Precautions

Napsin A (Lung Adenocarcinoma Marker) Antibody - With BSA and Azide is for research use only and not for use in diagnostic or therapeutic procedures.

Napsin A (Lung Adenocarcinoma Marker) Antibody - With BSA and Azide - Protein Information

Name NAPSA

Synonyms NAP1, NAPA

Function

May be involved in processing of pneumocyte surfactant precursors.

Cellular Location

Secreted.

Tissue Location

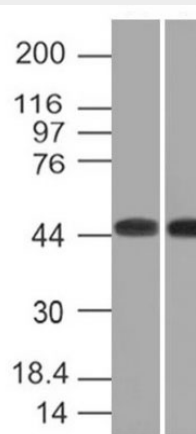
Expressed predominantly in adult lung (type II pneumocytes) and kidney and in fetal lung. Low levels in adult spleen and very low levels in peripheral blood leukocytes

Napsin A (Lung Adenocarcinoma Marker) Antibody - With BSA and Azide - Protocols

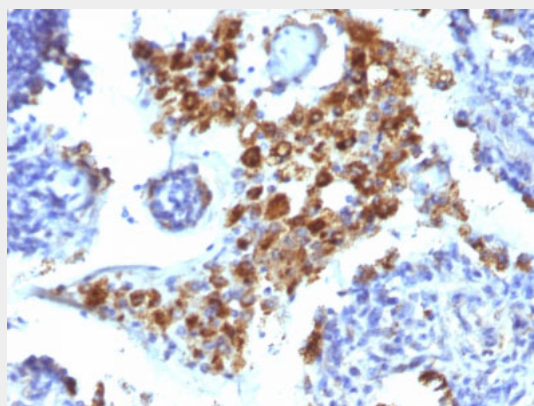
Provided below are standard protocols that you may find useful for product applications.

- [Western Blot](#)
- [Blocking Peptides](#)
- [Dot Blot](#)
- [Immunohistochemistry](#)
- [Immunofluorescence](#)
- [Immunoprecipitation](#)
- [Flow Cytometry](#)
- [Cell Culture](#)

Napsin A (Lung Adenocarcinoma Marker) Antibody - With BSA and Azide - Images



Western Blot of K562 and HEK293 Cell Lysates using Napsin-A Monoclonal Antibody (NAPSA/1238)



Formalin-fixed, paraffin-embedded human Lung Adenocarcinoma stained with Napsin-A Monoclonal Antibody (NAPSA/1238).

Napsin A (Lung Adenocarcinoma Marker) Antibody - With BSA and Azide - Background

Napsin is a pepsin-like aspartic proteinase connected with maturation of surfactant protein B. There are two closely related napsins, napsin A and napsin B. Napsin A is expressed as a single

chain protein. Immunohistochemical studies revealed high expression levels of napsin A in human lung and kidney but low expression in spleen. Napsin A is expressed in type II pneumocytes and in adenocarcinomas of lung. The high specificity expression of napsin A in adenocarcinomas of lung is useful to distinguish primary lung adenocarcinomas from adenocarcinomas of other organs.

Napsin A (Lung Adenocarcinoma Marker) Antibody - With BSA and Azide - References

Bishop, JA et. al. Hum Pathol 41: 20-25 | Ordonez, NG 2012 Adv Anat Pathol 19: 66-73 | Ye, J et. al. Appl Immunohistochem Mol Morphol 19: 313-31