

CD20 / MS4A1 (B-Cell Marker) Antibody - Culture Supernatant
Mouse Monoclonal Antibody [Clone L26]
Catalog # AH12657**Specification**

CD20 / MS4A1 (B-Cell Marker) Antibody - Culture Supernatant - Product Information

Application	,2,3,4,
Primary Accession	P11836
Other Accession	931 , 712553
Reactivity	Human, Monkey, Baboon
Host	Mouse
Clonality	Monoclonal
Isotype	Mouse / IgG2a, kappa
Calculated MW	33-37kDa KDa

CD20 / MS4A1 (B-Cell Marker) Antibody - Culture Supernatant - Additional Information**Gene ID** 931**Other Names**

B-lymphocyte antigen CD20, B-lymphocyte surface antigen B1, Bp35, Leukocyte surface antigen Leu-16, Membrane-spanning 4-domains subfamily A member 1, CD20, MS4A1, CD20

Storage

Store at 2 to 8°C. Antibody is stable for 24 months.

Precautions

CD20 / MS4A1 (B-Cell Marker) Antibody - Culture Supernatant is for research use only and not for use in diagnostic or therapeutic procedures.

CD20 / MS4A1 (B-Cell Marker) Antibody - Culture Supernatant - Protein Information**Name** MS4A1**Synonyms** CD20**Function**B-lymphocyte-specific membrane protein that plays a role in the regulation of cellular calcium influx necessary for the development, differentiation, and activation of B-lymphocytes (PubMed: [12920111](http://www.uniprot.org/citations/12920111), PubMed: [3925015](http://www.uniprot.org/citations/3925015), PubMed: [7684739](http://www.uniprot.org/citations/7684739)). Functions as a store-operated calcium (SOC) channel component promoting calcium influx after activation by the B-cell receptor/BCR (PubMed: [12920111](http://www.uniprot.org/citations/12920111), PubMed: [18474602](http://www.uniprot.org/citations/18474602), PubMed: [7684739](http://www.uniprot.org/citations/7684739)).

Cellular Location

Cell membrane; Multi-pass membrane protein. Cell membrane; Lipid-anchor. Note=Constitutively associated with membrane rafts.

Tissue Location

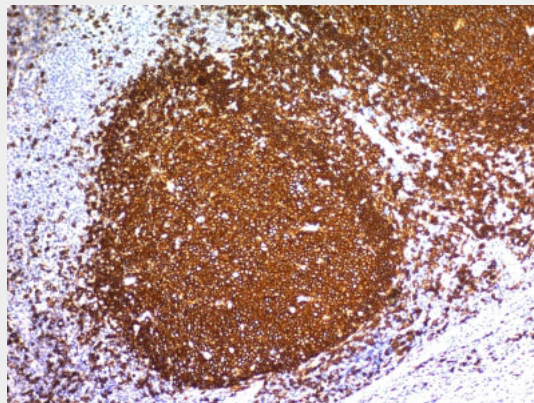
Expressed on B-cells.

CD20 / MS4A1 (B-Cell Marker) Antibody - Culture Supernatant - Protocols

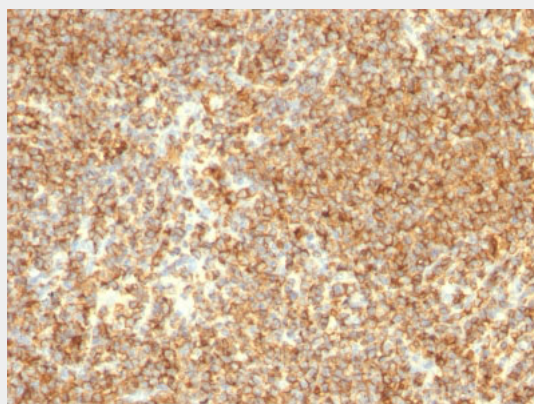
Provided below are standard protocols that you may find useful for product applications.

- [Western Blot](#)
- [Blocking Peptides](#)
- [Dot Blot](#)
- [Immunohistochemistry](#)
- [Immunofluorescence](#)
- [Immunoprecipitation](#)
- [Flow Cytometry](#)
- [Cell Culture](#)

CD20 / MS4A1 (B-Cell Marker) Antibody - Culture Supernatant - Images



Formalin-fixed, paraffin-embedded human Tonsil stained with CD20 Monoclonal Antibody (L26)



Formalin-fixed, paraffin-embedded human Lymphoma stained with CD20 Monoclonal Antibody (L26)

CD20 / MS4A1 (B-Cell Marker) Antibody - Culture Supernatant - Background

Recognizes a protein of 30-33kDa, which is identified as CD20. Its epitope is located in the cytoplasmic domain of CD20 and was, therefore, ascribed as CD20cy in the 5th Workshop. CD20 is a non-Ig differentiation antigen of B-cells and its expression is restricted to normal and neoplastic B-cells, being absent from all other leukocytes and tissues. CD20 is expressed by pre B-cells and persists during all stages of B-cell maturation but is lost upon terminal differentiation into plasma cells. This MAb can be used for immunophenotyping of leukemia and malignant cells, B lymphocyte detection in peripheral blood and B cell localization in tissues. It reacts with the majority of B-cells present in peripheral blood and lymphoid tissues and their derived lymphomas. In lymphoid tissue, germinal center blasts and B-immunoblasts are particularly reactive. It is a reliable antibody for ascribing a B-cell phenotype in known lymphoid tissues. Rarely, CD20-positive T-cell lymphomas have been reported. Reactivity has also been noted with Reed-Sternberg cells in cases of Hodgkin's disease, particularly of lymphocyte predominant type.

CD20 / MS4A1 (B-Cell Marker) Antibody - Culture Supernatant - References

Schlossman, S., et al., eds. 1995. Leucocyte Typing V. New York: Oxford University Press