

**Proximal Nephrogenic Antigen (Renal Cell Marker) Antibody - With BSA and Azide
Mouse Monoclonal Antibody [Clone PN-15]
Catalog # AH12554**

Specification

**Proximal Nephrogenic Antigen (Renal Cell Marker) Antibody - With BSA and Azide -
Product Information**

Application	,1,2,3,4,
Primary Accession	O16790
Other Accession	768 , 63287
Reactivity	Human, Horse
Host	Mouse
Clonality	Monoclonal
Isotype	Mouse / IgG2b, kappa
Calculated MW	55kDa KDa

**Proximal Nephrogenic Antigen (Renal Cell Marker) Antibody - With BSA and Azide -
Additional Information**

Gene ID 768

Other Names

Carbonic anhydrase 9, 4.2.1.1, Carbonate dehydratase IX, Carbonic anhydrase IX, CA-IX, CAIX, Membrane antigen MN, P54/58N, Renal cell carcinoma-associated antigen G250, RCC-associated antigen G250, pMW1, CA9, G250, MN

Storage

Store at 2 to 8°C. Antibody is stable for 24 months.

Precautions

Proximal Nephrogenic Antigen (Renal Cell Marker) Antibody - With BSA and Azide is for research use only and not for use in diagnostic or therapeutic procedures.

**Proximal Nephrogenic Antigen (Renal Cell Marker) Antibody - With BSA and Azide -
Protein Information**

Name CA9

Synonyms G250, MN

Function

Catalyzes the interconversion between carbon dioxide and water and the dissociated ions of carbonic acid (i.e. bicarbonate and hydrogen ions).

Cellular Location

Nucleus. Nucleus, nucleolus. Cell membrane; Single-pass type I membrane protein. Cell projection, microvillus membrane; Single-pass type I membrane protein. Note=Found on the surface microvilli and in the nucleus, particularly in nucleolus

Tissue Location

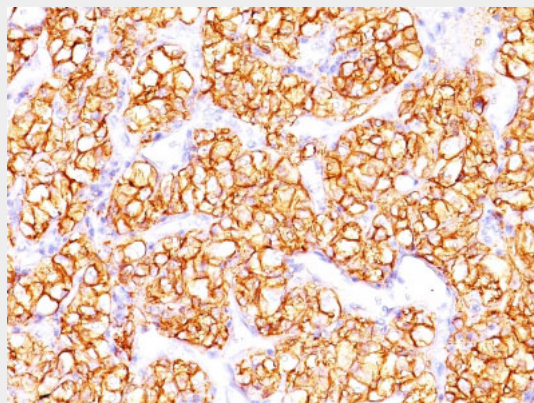
Expressed primarily in carcinoma cells lines. Expression is restricted to very few normal tissues and the most abundant expression is found in the epithelial cells of gastric mucosa

Proximal Nephrogenic Antigen (Renal Cell Marker) Antibody - With BSA and Azide - Protocols

Provided below are standard protocols that you may find useful for product applications.

- [Western Blot](#)
- [Blocking Peptides](#)
- [Dot Blot](#)
- [Immunohistochemistry](#)
- [Immunofluorescence](#)
- [Immunoprecipitation](#)
- [Flow Cytometry](#)
- [Cell Culture](#)

Proximal Nephrogenic Antigen (Renal Cell Marker) Antibody - With BSA and Azide - Images



Formalin-fixed, paraffin-embedded human Renal Cell Carcinoma stained with PNA Monoclonal Antibody (PN-15).

Proximal Nephrogenic Antigen (Renal Cell Marker) Antibody - With BSA and Azide - Background

Recognizes a glycoprotein of ~200kDa, identified as carbonic anhydrase IX (CAIX/gp200). Its epitope resides in the carbohydrate domain of gp200. It shows no significant cross-reactivity with other carbohydrate determinants, such as the Lewis blood group antigens, epithelial membrane antigen, HMFG, and AB blood group antigens. In normal kidney, gp200 is localized along the brush border of the pars convoluta and pars recta segments of the proximal tubule, as well as focally along the luminal surface of Bowman's capsule adjoining the outgoing proximal tubule. Reportedly, gp200 is expressed by 93% of primary and 84% of metastatic renal cell carcinomas. This MAb may be useful in the investigations of carcinomas of proximal nephrogenic differentiation especially those showing tubular differentiation.

Proximal Nephrogenic Antigen (Renal Cell Marker) Antibody - With BSA and Azide - References

Yoshida SO, et. al. Cancer Research, 1989, 49(7):1802-9