

Wilm's Tumor 1 (WT1) (Wilm's Tumor & Mesothelial Marker) Antibody - With BSA and Azide

Mouse Monoclonal Antibody [Clone WT1/857 + 6F-H2]
Catalog # AH12533

Specification**Wilm's Tumor 1 (WT1) (Wilm's Tumor & Mesothelial Marker) Antibody - With BSA and Azide - Product Information**

Application	,14,3,4,
Primary Accession	P19544
Other Accession	7490 , 591980
Reactivity	Human, Mouse, Rat
Host	Mouse
Clonality	Monoclonal
Isotype	Mouse / IgG's
Calculated MW	47-55kDa KDa

Wilm's Tumor 1 (WT1) (Wilm's Tumor & Mesothelial Marker) Antibody - With BSA and Azide - Additional Information

Gene ID 7490

Other Names

Wilms tumor protein, WT33, WT1

Storage

Store at 2 to 8°C. Antibody is stable for 24 months.

Precautions

Wilm's Tumor 1 (WT1) (Wilm's Tumor & Mesothelial Marker) Antibody - With BSA and Azide is for research use only and not for use in diagnostic or therapeutic procedures.

Wilm's Tumor 1 (WT1) (Wilm's Tumor & Mesothelial Marker) Antibody - With BSA and Azide - Protein Information

Name WT1

Function

Transcription factor that plays an important role in cellular development and cell survival (PubMed: [7862533](http://www.uniprot.org/citations/7862533)). Recognizes and binds to the DNA sequence 5'-GCG(T/G)GGGCG-3' (PubMed: [17716689](http://www.uniprot.org/citations/17716689), PubMed: [25258363](http://www.uniprot.org/citations/25258363), PubMed: [7862533](http://www.uniprot.org/citations/7862533)). Regulates the expression of numerous target genes, including EPO. Plays an essential role for development of the urogenital system. It has a tumor suppressor as well as an oncogenic role in tumor formation. Function may be isoform-specific: isoforms lacking the KTS motif may act as transcription factors (PubMed: [15520190](http://www.uniprot.org/citations/15520190)).

Isoforms containing the KTS motif may bind mRNA and play a role in mRNA metabolism or splicing (PubMed:16934801). Isoform 1 has lower affinity for DNA, and can bind RNA (PubMed:19123921).

Cellular Location

Nucleus. Nucleus, nucleolus. Cytoplasm. Note=Isoforms lacking the KTS motif have a diffuse nuclear location (PubMed:15520190). Shuttles between nucleus and cytoplasm. {ECO:0000250, ECO:0000269|PubMed:15520190} [Isoform 4]: Nucleus, nucleoplasm

Tissue Location

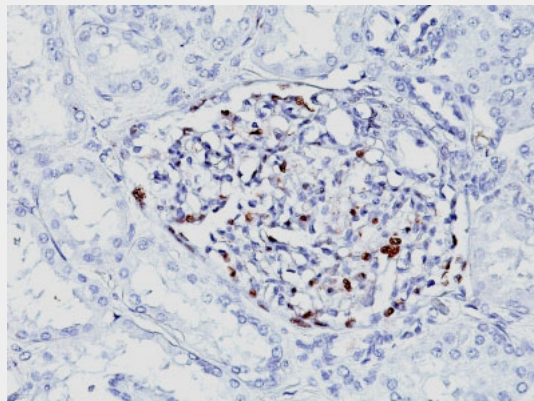
Expressed in the kidney and a subset of hematopoietic cells

Wilm's Tumor 1 (WT1) (Wilm's Tumor & Mesothelial Marker) Antibody - With BSA and Azide - Protocols

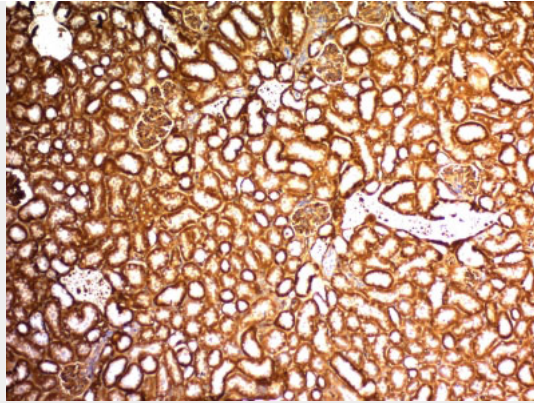
Provided below are standard protocols that you may find useful for product applications.

- [Western Blot](#)
- [Blocking Peptides](#)
- [Dot Blot](#)
- [Immunohistochemistry](#)
- [Immunofluorescence](#)
- [Immunoprecipitation](#)
- [Flow Cytometry](#)
- [Cell Culture](#)

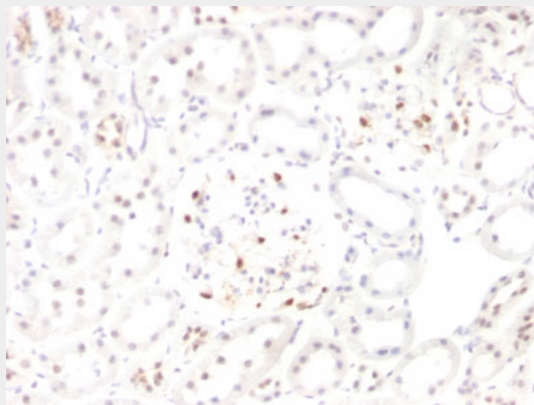
Wilm's Tumor 1 (WT1) (Wilm's Tumor & Mesothelial Marker) Antibody - With BSA and Azide - Images



Formalin-fixed, paraffin-embedded Human Fetal Kidney stained with WT1 Monoclonal Antibody (WT1/857 + 6F-H2).



Formalin-fixed, paraffin-embedded Mouse Kidney stained with WT1 Monoclonal Antibody (WT1/857 + 6F-H2).



Formalin-fixed, paraffin-embedded Rat Kidney stained with WT1 Monoclonal Antibody (WT1/857 + 6F-H2).

Wilm's Tumor 1 (WT1) (Wilm's Tumor & Mesothelial Marker) Antibody - With BSA and Azide - Background

Recognizes a 47-55kDa-tumor suppressor protein, identified as Wilm's Tumor (WT1) protein. The antibody reacts with all isoforms of the full-length WT1 and also identifies WT1 lacking exon 2-encoded amino acids, frequently found in subsets of sporadic Wilms tumors. WT1, a sporadic and familial pediatric kidney tumor, is genetically heterogeneous. Wilms tumor is associated with mutations of WT1, a zinc-finger transcription factor that is essential for the development of the metanephric kidney and the urogenital system. The WT1 gene is normally expressed in fetal kidney and mesothelium, and its expression has been suggested as a marker for Wilms tumor and mesothelioma. WT1 protein has been identified in proliferative mesothelial cells, malignant mesothelioma, ovarian carcinoma, gonadoblastoma, nephroblastoma, and desmoplastic small round cell tumor. Lung adenocarcinomas rarely stain positive with this antibody. WT1 protein expression in mesothelial cells has become a reliable marker for the diagnosis of mesotheliomas.

Wilm's Tumor 1 (WT1) (Wilm's Tumor & Mesothelial Marker) Antibody - With BSA and Azide - References

Rauscher FJ. The WT1 Wilms tumor gene product: A developmentally regulated transcription factor in the kidney that functions as a tumor suppressor. *FASEB J* 1993; 7:89