

**GRP94 / HSP90B1 (Endoplasmic Reticulum Marker) Antibody - With BSA and Azide
Rat Monoclonal Antibody [Clone SPM249]
Catalog # AH12456**

Specification

**GRP94 / HSP90B1 (Endoplasmic Reticulum Marker) Antibody - With BSA and Azide -
Product Information**

Application	,1,14,3,4,
Primary Accession	P14625
Other Accession	7184 , 192374
Reactivity	Human, Mouse, Rat, Rabbit, Hamster, Monkey, Pig, Chicken, Bovine, Sheep, Xenopus, Horse, Guinea Pig, Dog
Host	Rat
Clonality	Monoclonal
Isotype	Rat / IgG2a, kappa
Calculated MW	94kDa KDa

**GRP94 / HSP90B1 (Endoplasmic Reticulum Marker) Antibody - With BSA and Azide -
Additional Information**

Gene ID 7184

Other Names

Endoplasmin, 94 kDa glucose-regulated protein, GRP-94, Heat shock protein 90 kDa beta member 1, Tumor rejection antigen 1, gp96 homolog, HSP90B1, GRP94, TRA1

Storage

Store at 2 to 8°C. Antibody is stable for 24 months.

Precautions

GRP94 / HSP90B1 (Endoplasmic Reticulum Marker) Antibody - With BSA and Azide is for research use only and not for use in diagnostic or therapeutic procedures.

**GRP94 / HSP90B1 (Endoplasmic Reticulum Marker) Antibody - With BSA and Azide -
Protein Information**

Name HSP90B1 ([HGNC:12028](#))

Function

Molecular chaperone that functions in the processing and transport of secreted proteins (By similarity). When associated with CNPY3, required for proper folding of Toll-like receptors (By similarity). Functions in endoplasmic reticulum associated degradation (ERAD) (PubMed:18264092). Has ATPase activity (By similarity). May participate in the unfolding of cytosolic leaderless cargos (lacking the secretion signal sequence) such as the interleukin 1/IL-1 to facilitate their translocation into the ERGIC (endoplasmic reticulum- Golgi intermediate compartment) and secretion; the translocation process is mediated by the cargo receptor TMED10 (PubMed:32272059).

Cellular Location

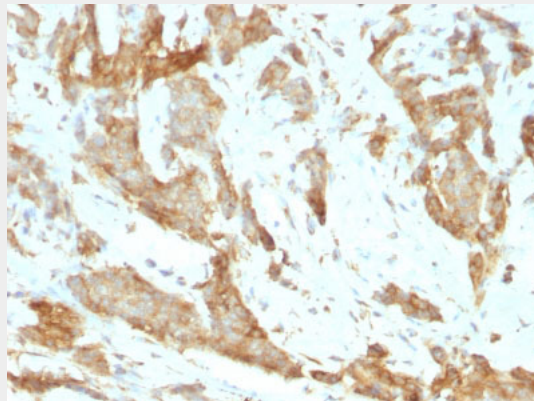
Endoplasmic reticulum lumen. Sarcoplasmic reticulum lumen {ECO:0000250|UniProtKB:P41148}.
Melanosome Note=Identified by mass spectrometry in melanosome fractions from stage I to stage IV.

GRP94 / HSP90B1 (Endoplasmic Reticulum Marker) Antibody - With BSA and Azide - Protocols

Provided below are standard protocols that you may find useful for product applications.

- [Western Blot](#)
- [Blocking Peptides](#)
- [Dot Blot](#)
- [Immunohistochemistry](#)
- [Immunofluorescence](#)
- [Immunoprecipitation](#)
- [Flow Cytometry](#)
- [Cell Culture](#)

GRP94 / HSP90B1 (Endoplasmic Reticulum Marker) Antibody - With BSA and Azide - Images



Formalin-fixed, paraffin-embedded human Breast Carcinoma stained with GRP94 Monoclonal Antibody (SPM249).

GRP94 / HSP90B1 (Endoplasmic Reticulum Marker) Antibody - With BSA and Azide - Background

Recognizes a protein of 94kDa, which is identified as the glucose-regulated protein 94 (grp94) and also tumor rejection antigen (gp96). Grp94 shows a high degree of sequence homology with the heat shock protein 90 (hsp90). This MAb is highly specific to grp94 and shows minimal cross-reaction with other members of the HSP90 family. Grp s are a class of proteins unresponsive to heat shock and are induced by glucose deprivation. Grp94 has been briefly studied as a prognostic factor in breast cancer.

GRP94 / HSP90B1 (Endoplasmic Reticulum Marker) Antibody - With BSA and Azide - References

Sorger, P.K. et al. J. Mol. Biol. 194: 341-344 (1987). | Tandon, A.K. et.al. Breast Cancer Res. and

Treat. 16: 146 (1990). |