

Bcl-X (Apoptosis Marker) Antibody - With BSA and Azide
Mouse Monoclonal Antibody [Clone SPM337]
Catalog # AH12260

Specification

Bcl-X (Apoptosis Marker) Antibody - With BSA and Azide - Product Information

Application	,1,2,3,4,
Primary Accession	Q07817
Other Accession	598 , 516966
Reactivity	Human, Mouse, Rat, Pig
Host	Mouse
Clonality	Monoclonal
Isotype	Mouse / IgG2a
Calculated MW	27kDa KDa

Bcl-X (Apoptosis Marker) Antibody - With BSA and Azide - Additional Information

Gene ID 598

Other Names

Bcl-2-like protein 1, Bcl2-L-1, Apoptosis regulator Bcl-X, BCL2L1, BCL2L, BCLX

Storage

Store at 2 to 8°C. Antibody is stable for 24 months.

Precautions

Bcl-X (Apoptosis Marker) Antibody - With BSA and Azide is for research use only and not for use in diagnostic or therapeutic procedures.

Bcl-X (Apoptosis Marker) Antibody - With BSA and Azide - Protein Information

Name BCL2L1

Synonyms BCL2L, BCLX

Function

Potent inhibitor of cell death. Inhibits activation of caspases. Appears to regulate cell death by blocking the voltage- dependent anion channel (VDAC) by binding to it and preventing the release of the caspase activator, CYC1, from the mitochondrial membrane. Also acts as a regulator of G2 checkpoint and progression to cytokinesis during mitosis. Isoform Bcl-X(S) promotes apoptosis.

Cellular Location

[Isoform Bcl-X(L)]: Mitochondrion inner membrane. Mitochondrion outer membrane Mitochondrion matrix. Cytoplasmic vesicle, secretory vesicle, synaptic vesicle membrane. Cytoplasm, cytosol. Cytoplasm, cytoskeleton, microtubule organizing center, centrosome. Nucleus membrane; Single-pass membrane protein; Cytoplasmic side. Note=After neuronal stimulation, translocates from cytosol to synaptic vesicle and mitochondrion membrane in a calmodulin-dependent manner (By similarity). Localizes to the centrosome when phosphorylated at Ser-49

Tissue Location

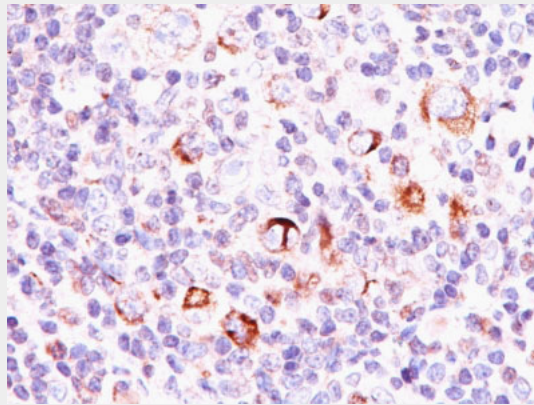
Bcl-X(S) is expressed at high levels in cells that undergo a high rate of turnover, such as developing lymphocytes. In contrast, Bcl-X(L) is found in tissues containing long-lived postmitotic cells, such as adult brain

Bcl-X (Apoptosis Marker) Antibody - With BSA and Azide - Protocols

Provided below are standard protocols that you may find useful for product applications.

- [Western Blot](#)
- [Blocking Peptides](#)
- [Dot Blot](#)
- [Immunohistochemistry](#)
- [Immunofluorescence](#)
- [Immunoprecipitation](#)
- [Flow Cytometry](#)
- [Cell Culture](#)

Bcl-X (Apoptosis Marker) Antibody - With BSA and Azide - Images



Formalin-fixed, paraffin-embedded human Hodgkin's Lymphoma stained with Bcl-x Monoclonal Antibody (SPM337).

Bcl-X (Apoptosis Marker) Antibody - With BSA and Azide - Background

Recognizes a protein of 27kDa, identified as the Bcl-X protein. This MAb shows no cross-reaction with Bcl-2 or Bax protein. Bcl-X has two isoforms, Bcl-XL (long), a 241 amino acid protein which suppresses cell death. And Bcl-XS (short), a 178 amino acid protein lacking a 63 amino acid domain which functions as a dominant inhibitor of Bcl-2. This MAb reacts with both Bcl-XS and Bcl-XL proteins.

Bcl-X (Apoptosis Marker) Antibody - With BSA and Azide - References

Hsu YT, et. al. Journal of Biological Chemistry, 1997, 272(21):13829-34. | Hsu YT, et. al. Proceedings of the National Academy of Sciences of the United States of America, 1997, 94(8):3668-72. | Wolter KG, et. al. Journal of Cell Biology, 1997, 139(5):1281-92