

Cytokeratin 7 (KRT7) (Glandular and Transitional Epithelial Marker) Antibody - With BSA and Azide

Mouse Monoclonal Antibody [Clone KRT7/903]
Catalog # AH11647

Specification

Cytokeratin 7 (KRT7) (Glandular and Transitional Epithelial Marker) Antibody - With BSA and Azide - Product Information

Application	,2,3,4,
Primary Accession	P08729
Other Accession	3855 , 411501
Reactivity	Human
Host	Mouse
Clonality	Monoclonal
Isotype	Mouse / IgG1
Calculated MW	54kDa KDa

Cytokeratin 7 (KRT7) (Glandular and Transitional Epithelial Marker) Antibody - With BSA and Azide - Additional Information

Gene ID 3855

Other Names

Keratin, type II cytoskeletal 7, Cytokeratin-7, CK-7, Keratin-7, K7, Sarcolectin, Type-II keratin Kb7, KRT7, SCL

Storage

Store at 2 to 8°C. Antibody is stable for 24 months.

Precautions

Cytokeratin 7 (KRT7) (Glandular and Transitional Epithelial Marker) Antibody - With BSA and Azide is for research use only and not for use in diagnostic or therapeutic procedures.

Cytokeratin 7 (KRT7) (Glandular and Transitional Epithelial Marker) Antibody - With BSA and Azide - Protein Information

Name KRT7

Synonyms SCL

Function

Blocks interferon-dependent interphase and stimulates DNA synthesis in cells. Involved in the translational regulation of the human papillomavirus type 16 E7 mRNA (HPV16 E7).

Cellular Location

Cytoplasm.

Tissue Location

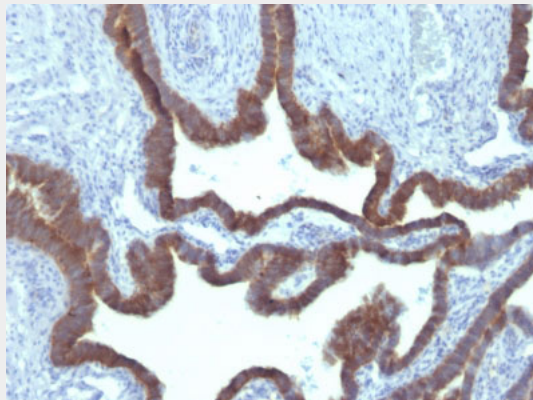
Expressed in cultured epidermal, bronchial and mesothelial cells but absent in colon, ectocervix and liver. Observed throughout the glandular cells in the junction between stomach and esophagus but is absent in the esophagus.

Cytokeratin 7 (KRT7) (Glandular and Transitional Epithelial Marker) Antibody - With BSA and Azide - Protocols

Provided below are standard protocols that you may find useful for product applications.

- [Western Blot](#)
- [Blocking Peptides](#)
- [Dot Blot](#)
- [Immunohistochemistry](#)
- [Immunofluorescence](#)
- [Immunoprecipitation](#)
- [Flow Cytometry](#)
- [Cell Culture](#)

Cytokeratin 7 (KRT7) (Glandular and Transitional Epithelial Marker) Antibody - With BSA and Azide - Images



Formalin-fixed, paraffin-embedded human Ovarian Carcinoma stained with Cytokeratin 7 Monoclonal Antibody (KRT7/903)

Cytokeratin 7 (KRT7) (Glandular and Transitional Epithelial Marker) Antibody - With BSA and Azide - Background

Cytokeratin 7 is a basic cytokeratin, which is found in most glandular and transitional epithelia but not in the stratified squamous epithelia. Keratin 7 is expressed in the epithelial cells of ovary, lung, and breast but not of colon, prostate, or gastrointestinal tract. Antibody to cytokeratin is useful in distinguishing ovarian carcinomas (keratin 7+) from colon carcinomas (keratin 7-).

Cytokeratin 7 (KRT7) (Glandular and Transitional Epithelial Marker) Antibody - With BSA and Azide - References

Fuchs, E. 1995. Keratins and the skin. *Annu. Rev. Cell Dev. Biol.* 11:123-153. |