

IDH1 (Isocitrate Dehydrogenase) Antibody - With BSA and Azide
Rabbit Polyclonal Antibody [Clone]
Catalog # AH11497

Specification

IDH1 (Isocitrate Dehydrogenase) Antibody - With BSA and Azide - Product Information

| | |
|-------------------|---|
| Application | ,1,3,4, |
| Primary Accession | O75874 |
| Other Accession | 3417 , 593422 |
| Reactivity | Human |
| Host | Rabbit |
| Clonality | Polyclonal |
| Isotype | Rabbit / Immunoglobulin |
| Calculated MW | 45-47kDa KDa |

IDH1 (Isocitrate Dehydrogenase) Antibody - With BSA and Azide - Additional Information

Gene ID 3417

Other Names

Isocitrate dehydrogenase [NADP] cytoplasmic, IDH, 1.1.1.42, Cytosolic NADP-isocitrate dehydrogenase, IDP, NADP(+)-specific ICDH, Oxalosuccinate decarboxylase, IDH1, PICD

Storage

Store at 2 to 8°C. Antibody is stable for 24 months.

Precautions

IDH1 (Isocitrate Dehydrogenase) Antibody - With BSA and Azide is for research use only and not for use in diagnostic or therapeutic procedures.

IDH1 (Isocitrate Dehydrogenase) Antibody - With BSA and Azide - Protein Information

Name IDH1

Synonyms PICD

Function

Catalyzes the NADP(+)-dependent oxidative decarboxylation of isocitrate (D-threo-isocitrate) to 2-ketoglutarate (2-oxoglutarate), which is required by other enzymes such as the phytanoyl-CoA dioxygenase (PubMed: [10521434](http://www.uniprot.org/citations/10521434)), PubMed: [19935646](http://www.uniprot.org/citations/19935646)). Plays a critical role in the generation of NADPH, an important cofactor in many biosynthesis pathways (PubMed: [10521434](http://www.uniprot.org/citations/10521434)). May act as a corneal epithelial crystallin and may be involved in maintaining corneal epithelial transparency (By similarity).

Cellular Location

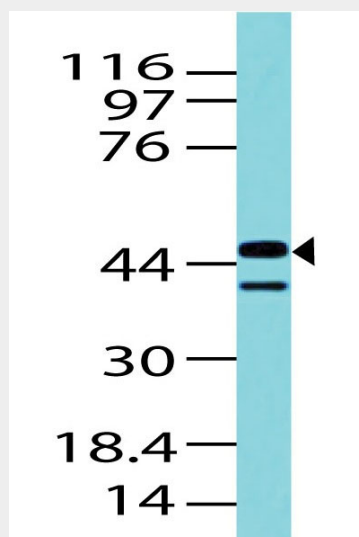
Cytoplasm, cytosol. Peroxisome

IDH1 (Isocitrate Dehydrogenase) Antibody - With BSA and Azide - Protocols

Provided below are standard protocols that you may find useful for product applications.

- [Western Blot](#)
- [Blocking Peptides](#)
- [Dot Blot](#)
- [Immunohistochemistry](#)
- [Immunofluorescence](#)
- [Immunoprecipitation](#)
- [Flow Cytometry](#)
- [Cell Culture](#)

IDH1 (Isocitrate Dehydrogenase) Antibody - With BSA and Azide - Images



Western Blot Analysis of A431 Cell Lysate using IDH1 Polyclonal Antibody (Rabbit)

IDH1 (Isocitrate Dehydrogenase) Antibody - With BSA and Azide - Background

It recognizes a 45kDa protein, which is identified as isocitrate dehydrogenase (IDH1). It belongs to the isocitrate and isopropylmalate dehydrogenases family. IDH1 catalyzes the third step of the citric acid cycle, which involves the oxidative decarboxylation of isocitrate, forming α -ketoglutarate and CO₂ in a two-step reaction. The first step involves the oxidation of isocitrate to the intermediate oxalosuccinate, while the second step involves the production of α -ketoglutarate. During this process, either NADH or NADPH is produced along with CO₂. Recently, an inactivating mutation of IDH1 has been implicated in glioblastoma. IDH1 appears to function as a tumor suppressor that, when mutationally inactivated, contributes to tumorigenesis in part through induction of the HIF-1 pathway.

IDH1 (Isocitrate Dehydrogenase) Antibody - With BSA and Azide - References

Geisbrecht, B.V. and Gould, S.J. 1999. The human PICD gene encodes a cytoplasmic and peroxisomal NADP⁺-dependent isocitrate dehydrogenase. *J. Biol. Chem.* 274: 30527-30533