

**Tenascin C (Stromal Marker For Epithelial Malignancy) Antibody - With BSA and Azide
Mouse Monoclonal Antibody [Clone T2H5]
Catalog # AH11477**

Specification

**Tenascin C (Stromal Marker For Epithelial Malignancy) Antibody - With BSA and Azide -
Product Information**

Application	,2,3,4,
Primary Accession	P24821
Other Accession	3371 , 143250
Reactivity	Human
Host	Mouse
Clonality	Monoclonal
Isotype	Mouse / IgG1, kappa
Calculated MW	210kDa and 300kDa KDa

**Tenascin C (Stromal Marker For Epithelial Malignancy) Antibody - With BSA and Azide -
Additional Information**

Gene ID 3371

Other Names

Tenascin, TN, Cytotactin, GMEM, GP 150-225, Glioma-associated-extracellular matrix antigen, Hexabrachion, JI, Myotendinous antigen, Neuronectin, Tenascin-C, TN-C, TNC, HXB

Storage

Store at 2 to 8°C. Antibody is stable for 24 months.

Precautions

Tenascin C (Stromal Marker For Epithelial Malignancy) Antibody - With BSA and Azide is for research use only and not for use in diagnostic or therapeutic procedures.

**Tenascin C (Stromal Marker For Epithelial Malignancy) Antibody - With BSA and Azide -
Protein Information**

Name TNC

Synonyms HXB

Function

Extracellular matrix protein implicated in guidance of migrating neurons as well as axons during development, synaptic plasticity as well as neuronal regeneration. Promotes neurite outgrowth from cortical neurons grown on a monolayer of astrocytes. Ligand for integrins alpha-8/beta-1, alpha-9/beta-1, alpha-V/beta-3 and alpha- V/beta-6. In tumors, stimulates angiogenesis by elongation, migration and sprouting of endothelial cells (PubMed:19884327).

Cellular Location

Secreted, extracellular space, extracellular matrix

Tissue Location

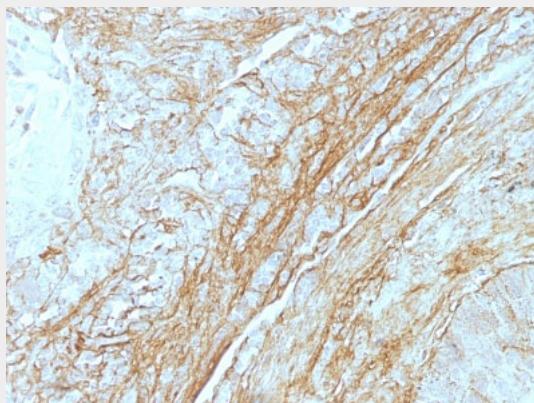
Detected in fibroblasts (at protein level).

Tenascin C (Stromal Marker For Epithelial Malignancy) Antibody - With BSA and Azide - Protocols

Provided below are standard protocols that you may find useful for product applications.

- [Western Blot](#)
- [Blocking Peptides](#)
- [Dot Blot](#)
- [Immunohistochemistry](#)
- [Immunofluorescence](#)
- [Immunoprecipitation](#)
- [Flow Cytometry](#)
- [Cell Culture](#)

Tenascin C (Stromal Marker For Epithelial Malignancy) Antibody - With BSA and Azide - Images



Formalin-fixed, paraffin-embedded human Lung Carcinoma stained with **Tenascin C Monoclonal Antibody (T2H5)** at 4ug/ml. Antigen retrieval in 10mM Tris with 1mM EDTA, pH 9.0; ABC detection system with DAB Chromogen. Note staining of connective tissue.

Tenascin C (Stromal Marker For Epithelial Malignancy) Antibody - With BSA and Azide - Background

In Western blotting, it reacts with two bands of ~MW of 210kDa and 300kDa, identified as two isoforms of Tenascin C. Specificity of this MAb is validated by sequential immunoprecipitation with a PAb against Tenascin C. Tenascin C is a multifunctional, disulfide-linked hexameric extracellular matrix glycoprotein expressed in association with mesenchymal epithelial interactions during development and in the neo-vasculature and stroma of undifferentiated tumors. In adults, it is restricted to certain epithelial-stromal interfaces and increases markedly in hyper-proliferative diseases and in stroma of many neoplasms, including gliomas, breast, squamous and lung carcinomas.

Tenascin C (Stromal Marker For Epithelial Malignancy) Antibody - With BSA and Azide - References

Verstraeten AA, et. al. British Journal of Dermatology, 1992, 127(6):571-4