

## **Alkaline Phosphatase (Placental) / PLAP (Germ Cell Tumor Marker) Antibody - With BSA and Azide**

Mouse Monoclonal Antibody [Clone PL8-F6 ]  
Catalog # AH11263

### **Specification**

---

## **Alkaline Phosphatase (Placental) / PLAP (Germ Cell Tumor Marker) Antibody - With BSA and Azide - Product Information**

Application	,13,3,4,
Primary Accession	<a href="#">P05187</a>
Other Accession	<a href="#">250</a> , <a href="#">284255</a>
Reactivity	Human
Host	Mouse
Clonality	Monoclonal
Isotype	Mouse / IgG2b, kappa
Calculated MW	70kDa KDa

## **Alkaline Phosphatase (Placental) / PLAP (Germ Cell Tumor Marker) Antibody - With BSA and Azide - Additional Information**

Gene ID 250

### **Other Names**

Alkaline phosphatase, placental type, 3.1.3.1, Alkaline phosphatase Regan isozyme, Placental alkaline phosphatase 1, PLAP-1, ALPP, PLAP

### **Storage**

Store at 2 to 8°C. Antibody is stable for 24 months.

### **Precautions**

Alkaline Phosphatase (Placental) / PLAP (Germ Cell Tumor Marker) Antibody - With BSA and Azide is for research use only and not for use in diagnostic or therapeutic procedures.

## **Alkaline Phosphatase (Placental) / PLAP (Germ Cell Tumor Marker) Antibody - With BSA and Azide - Protein Information**

Name ALPP ([HGNC:439](#))

### **Function**

Alkaline phosphatase that can hydrolyze various phosphate compounds.

### **Cellular Location**

Cell membrane; Lipid-anchor, GPI-anchor

### **Tissue Location**

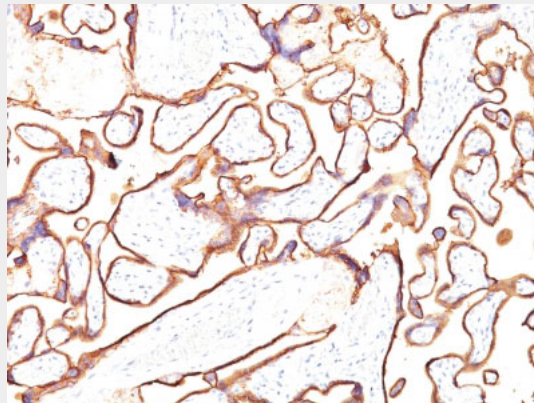
Detected in placenta (at protein level).

## **Alkaline Phosphatase (Placental) / PLAP (Germ Cell Tumor Marker) Antibody - With BSA and Azide - Protocols**

Provided below are standard protocols that you may find useful for product applications.

- [Western Blot](#)
- [Blocking Peptides](#)
- [Dot Blot](#)
- [Immunohistochemistry](#)
- [Immunofluorescence](#)
- [Immunoprecipitation](#)
- [Flow Cytometry](#)
- [Cell Culture](#)

## **Alkaline Phosphatase (Placental) / PLAP (Germ Cell Tumor Marker) Antibody - With BSA and Azide - Images**



Formalin-fixed, paraffin-embedded human Placenta stained with PLAP Monoclonal Antibody (PL8-F6).

## **Alkaline Phosphatase (Placental) / PLAP (Germ Cell Tumor Marker) Antibody - With BSA and Azide - Background**

Reacts with a 70kDa membrane-bound isozyme (Regan and Nagao type) of Placental Alkaline Phosphatase (PLAP) occurring in the placenta during the 3rd trimester of gestation. It is highly specific for PLAP and shows no cross-reaction with other isozymes of alkaline phosphatase. Anti-PLAP reacts with germ cell tumors and can discriminate between these and other neoplasms. Somatic neoplasms e.g. breast, gastrointestinal, prostatic, and urinary cancers may also immunoreact with antibodies to PLAP. Anti-PLAP positivity in conjunction with anti-keratin negativity favors seminoma over carcinoma. Germ cell tumors are usually anti-keratin positive, but they regularly fail to stain with anti-EMA, whereas most carcinomas stain with anti-EMA. Anti-PLAP has been useful in the diagnosis of gestational trophoblastic disease.Ã

## **Alkaline Phosphatase (Placental) / PLAP (Germ Cell Tumor Marker) Antibody - With BSA and Azide - References**

Fishman WH, et al. Cancer Res 28:150-154, 1968. | Ho DM, et al. Cancer 70: 1577-1584, 1992. | Loke Y, et al. Int J Cancer 25:459-461, 1980. | Millan JL and Manes T. Proc Natl Acad Sci USA 85: 3024-3028, 1988. |