

**HER-2 / c-erbB-2 / neu / CD340 Antibody - With BSA and Azide**  
**Mouse Monoclonal Antibody [Clone ERB2/776 ]**  
**Catalog # AH11185**

### Specification

---

#### HER-2 / c-erbB-2 / neu / CD340 Antibody - With BSA and Azide - Product Information

Application	,14,3,4,
Primary Accession	<a href="#">P04626</a>
Other Accession	<a href="#">2064</a> , <a href="#">446352</a>
Reactivity	Human
Host	Mouse
Clonality	Monoclonal
Isotype	Mouse / IgG1, kappa
Calculated MW	185kDa KDa

#### HER-2 / c-erbB-2 / neu / CD340 Antibody - With BSA and Azide - Additional Information

Gene ID 2064

#### Other Names

Receptor tyrosine-protein kinase erbB-2, 2.7.10.1, Metastatic lymph node gene 19 protein, MLN 19, Proto-oncogene Neu, Proto-oncogene c-ErbB-2, Tyrosine kinase-type cell surface receptor HER2, p185erbB2, CD340, ERBB2, HER2, MLN19, NEU, NGL

#### Storage

Store at 2 to 8°C. Antibody is stable for 24 months.

#### Precautions

HER-2 / c-erbB-2 / neu / CD340 Antibody - With BSA and Azide is for research use only and not for use in diagnostic or therapeutic procedures.

#### HER-2 / c-erbB-2 / neu / CD340 Antibody - With BSA and Azide - Protein Information

Name ERBB2

Synonyms HER2, MLN19, NEU, NGL

#### Function

Protein tyrosine kinase that is part of several cell surface receptor complexes, but that apparently needs a coreceptor for ligand binding. Essential component of a neuregulin-receptor complex, although neuregulins do not interact with it alone. GP30 is a potential ligand for this receptor. Regulates outgrowth and stabilization of peripheral microtubules (MTs). Upon ERBB2 activation, the MEMO1-RHOA-DIAPH1 signaling pathway elicits the phosphorylation and thus the inhibition of GSK3B at cell membrane. This prevents the phosphorylation of APC and CLASP2, allowing its association with the cell membrane. In turn, membrane-bound APC allows the localization of MACF1 to the cell membrane, which is required for microtubule capture and stabilization.

#### Cellular Location

Cell membrane; Single-pass type I membrane protein. Cell projection, ruffle membrane; Single-pass type I membrane protein. Note=Internalized from the cell membrane in response to EGF stimulation. [Isoform 2]: Cytoplasm. Nucleus.

#### **Tissue Location**

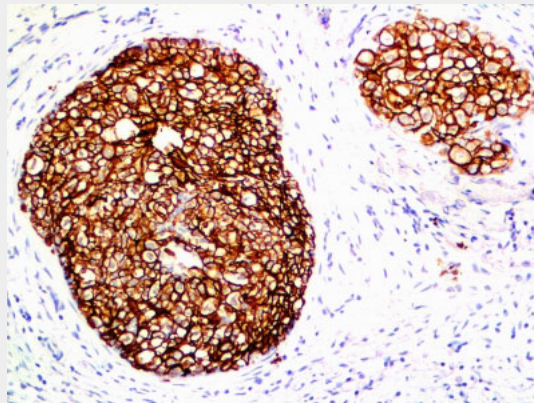
Expressed in a variety of tumor tissues including primary breast tumors and tumors from small bowel, esophagus, kidney and mouth.

#### **HER-2 / c-erbB-2 / neu / CD340 Antibody - With BSA and Azide - Protocols**

Provided below are standard protocols that you may find useful for product applications.

- [Western Blot](#)
- [Blocking Peptides](#)
- [Dot Blot](#)
- [Immunohistochemistry](#)
- [Immunofluorescence](#)
- [Immunoprecipitation](#)
- [Flow Cytometry](#)
- [Cell Culture](#)

#### **HER-2 / c-erbB-2 / neu / CD340 Antibody - With BSA and Azide - Images**



Formalin-fixed, paraffin-embedded human Breast Carcinoma stained with HER-2 Monoclonal Antibody (ERB2/776).

#### **HER-2 / c-erbB-2 / neu / CD340 Antibody - With BSA and Azide - Background**

This MAb is specific to c-erbB-2/HER-2 and shows minimal cross-reaction with other members of the family. C-erbB-2/HER-2 is a member of the EGFR family. Receptors of this family are located on the plasma membrane and consist of an extracellular ligand-binding domain that is connected to a large intracellular domain by a single transmembrane sequence. c-erbB-2/HER-2 protein is over-expressed in a variety of carcinomas especially those of breast and ovary.

#### **HER-2 / c-erbB-2 / neu / CD340 Antibody - With BSA and Azide - References**

Utrilla JC, et al. *Histopathology*. 34: 60-65 (1999). | Wright C, et al. *British Journal of Cancer*. 65: 118-121 (1992). | Corbett IP, et al. *Journal of Pathology*. 161: 15-25 (1990)