

Tyrosinase (Melanoma Marker) Antibody - With BSA and Azide
Mouse Monoclonal Antibody [Clone SPM360]
Catalog # AH10792

Specification

Tyrosinase (Melanoma Marker) Antibody - With BSA and Azide - Product Information

Application	,14,3,4,
Primary Accession	P14679
Other Accession	7299 , 503555
Reactivity	Human
Host	Mouse
Clonality	Monoclonal
Isotype	Mouse / IgG2a, kappa
Calculated MW	70-80kDa KDa

Tyrosinase (Melanoma Marker) Antibody - With BSA and Azide - Additional Information

Gene ID 7299

Other Names

Tyrosinase, 1.14.18.1, LB24-AB, Monophenol monooxygenase, SK29-AB, Tumor rejection antigen AB, TYR

Format

200ug/ml of Ab purified from Bioreactor Concentrate by Protein A/G. Prepared in 10mM PBS with 0.05% BSA & 0.05% azide. Also available WITHOUT BSA & azide at 1.0mg/ml.

Storage

Store at 2 to 8°C. Antibody is stable for 24 months.

Precautions

Tyrosinase (Melanoma Marker) Antibody - With BSA and Azide is for research use only and not for use in diagnostic or therapeutic procedures.

Tyrosinase (Melanoma Marker) Antibody - With BSA and Azide - Protein Information

Name TYR ([HGNC:12442](#))

Function

This is a copper-containing oxidase that functions in the formation of pigments such as melanins and other polyphenolic compounds. Catalyzes the initial and rate limiting step in the cascade of reactions leading to melanin production from tyrosine (By similarity). In addition to hydroxylating tyrosine to DOPA (3,4- dihydroxyphenylalanine), also catalyzes the oxidation of DOPA to DOPA-quinone, and possibly the oxidation of DHI (5,6-dihydroxyindole) to indole-5,6 quinone (PubMed:28661582).

Cellular Location

Melanosome membrane; Single-pass type I membrane protein. Melanosome

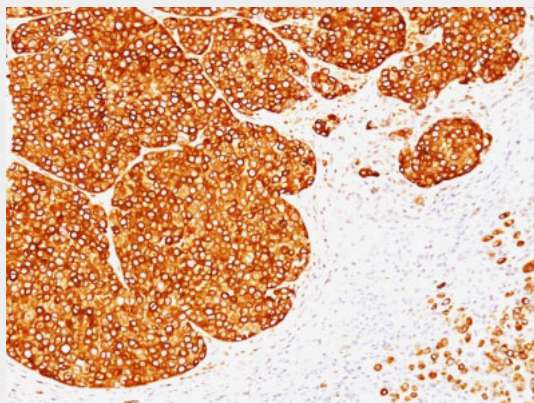
{ECO:0000250|UniProtKB:P11344}. Note=Proper trafficking to melanosome is regulated by SGS2, ANKRD27, RAB9A, RAB32 and RAB38 {ECO:0000250|UniProtKB:P11344}

Tyrosinase (Melanoma Marker) Antibody - With BSA and Azide - Protocols

Provided below are standard protocols that you may find useful for product applications.

- [Western Blot](#)
- [Blocking Peptides](#)
- [Dot Blot](#)
- [Immunohistochemistry](#)
- [Immunofluorescence](#)
- [Immunoprecipitation](#)
- [Flow Cytometry](#)
- [Cell Culture](#)

Tyrosinase (Melanoma Marker) Antibody - With BSA and Azide - Images



Formalin-fixed, paraffin-embedded human Melanoma stained with Tyrosinase Monoclonal Antibody (SPM360).

Tyrosinase (Melanoma Marker) Antibody - With BSA and Azide - Background

Recognizes a cluster of proteins between 70-80kDa, identified as tyrosinase. Occasionally a minor band at 55kDa is also detected. This MAb shows no cross-reaction with MAGE-1 and tyrosinase-related protein 1, TRP-1/gp75. Tyrosinase is a copper-containing metalloglycoprotein that catalyzes several steps in the melanin pigment biosynthetic pathway; the hydroxylation of tyrosine to L-3,4-dihydroxy-phenylalanine (dopa), and the subsequent oxidation of dopa to dopaquinone. Mutations of the tyrosinase gene occur in various forms of albinism. Tyrosinase is one of the targets for cytotoxic T-cell recognition in melanoma patients. Staining of melanomas with this MAb shows tyrosinase in melanotic as well as amelanotic variants. This MAb is a useful marker for melanocytes and melanomas.

Tyrosinase (Melanoma Marker) Antibody - With BSA and Azide - References

Chen Y-T, et. al. Proc. Natl. Acad. Sci. USA, 1995, 92:8125-8129