

**TIMP-3 (Tissue Inhibitor of Metalloproteinase-3) Antibody - With BSA and Azide  
Rabbit Polyclonal Antibody  
Catalog # AH10766**

**Specification**

---

**TIMP-3 (Tissue Inhibitor of Metalloproteinase-3) Antibody - With BSA and Azide -  
Product Information**

Application	,14,3,4,
Primary Accession	<a href="#">P35625</a>
Other Accession	<a href="#">7078</a> , <a href="#">644633</a> , <a href="#">714168</a>
Reactivity	Human, Mouse, Rat, Bovine, Horse, Dog
Host	Rabbit
Clonality	Polyclonal
Isotype	Rabbit / IgG
Calculated MW	30kDa KDa

**TIMP-3 (Tissue Inhibitor of Metalloproteinase-3) Antibody - With BSA and Azide -  
Additional Information**

**Gene ID** 7078

**Other Names**

Metalloproteinase inhibitor 3, Protein MIG-5, Tissue inhibitor of metalloproteinases 3, TIMP-3, TIMP3

**Format**

200ug/ml of Ab purified from rabbit anti-serum by Protein A. Prepared in 10mM PBS with 0.05% BSA & 0.05% azide. Also available WITHOUT BSA at 1.0mg/ml.

**Storage**

Store at 2 to 8°C. Antibody is stable for 24 months.

**Precautions**

TIMP-3 (Tissue Inhibitor of Metalloproteinase-3) Antibody - With BSA and Azide is for research use only and not for use in diagnostic or therapeutic procedures.

**TIMP-3 (Tissue Inhibitor of Metalloproteinase-3) Antibody - With BSA and Azide - Protein  
Information**

**Name** TIMP3

**Function**

Complexes with metalloproteinases (such as collagenases) and irreversibly inactivates them by binding to their catalytic zinc cofactor. May form part of a tissue-specific acute response to remodeling stimuli. Known to act on MMP-1, MMP-2, MMP-3, MMP-7, MMP-9, MMP-13, MMP-14 and MMP-15.

**Cellular Location**

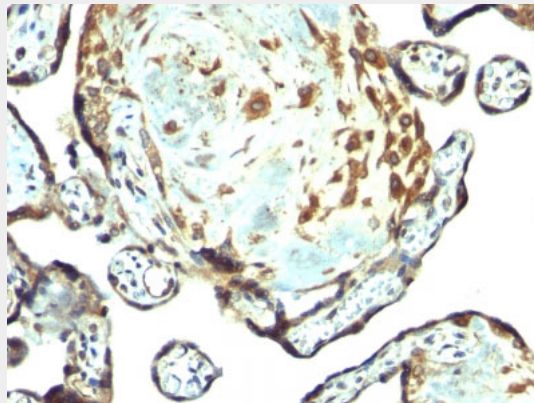
Secreted, extracellular space, extracellular matrix

### **TIMP-3 (Tissue Inhibitor of Metalloproteinase-3) Antibody - With BSA and Azide - Protocols**

Provided below are standard protocols that you may find useful for product applications.

- [Western Blot](#)
- [Blocking Peptides](#)
- [Dot Blot](#)
- [Immunohistochemistry](#)
- [Immunofluorescence](#)
- [Immunoprecipitation](#)
- [Flow Cytometry](#)
- [Cell Culture](#)

### **TIMP-3 (Tissue Inhibitor of Metalloproteinase-3) Antibody - With BSA and Azide - Images**



Formalin-fixed, paraffin-embedded human Placenta stained with TIMP3 Rabbit Polyclonal Antibody.

### **TIMP-3 (Tissue Inhibitor of Metalloproteinase-3) Antibody - With BSA and Azide - Background**

TIMP3 (tissue inhibitor of metalloproteinases 3), along with family members TIMP1, TIMP2, and TIMP4, are inhibitors of the matrix metalloproteinases (MMPs), a group of peptidases involved in degradation of the extracellular matrix (ECM). An imbalance between MMPs and the associated TIMPs may play a significant role in the invasive phenotype of malignant tumors. TIMPs inhibit the proteolytic invasiveness of tumor cells and normal placental trophoblast cells. TIMP-3 may be involved in regulating trophoblastic invasion of the uterus as well as in regulating remodeling of the extracellular matrix during the folding of epithelia, and in the formation, branching and expansion of epithelial tubes.

### **TIMP-3 (Tissue Inhibitor of Metalloproteinase-3) Antibody - With BSA and Azide - References**

Nagase, H. et al. (2006) Cardiovasc Res 69, 562-73. | Visse, R. and Nagase, H. (2003) Circ Res 92, 827-39. |