

**Cytokeratin 10 (KRT10) (Suprabasal Epithelial Marker) Antibody - With BSA and Azide
Mouse Monoclonal Antibody [Clone SPM261]
Catalog # AH10560**

Specification

**Cytokeratin 10 (KRT10) (Suprabasal Epithelial Marker) Antibody - With BSA and Azide -
Product Information**

Application	,14,3,4,
Primary Accession	P13645
Other Accession	3858 , 99936
Reactivity	Human, Mouse
Host	Mouse
Clonality	Monoclonal
Isotype	Mouse / IgG1, kappa
Calculated MW	56.5kDa KDa

**Cytokeratin 10 (KRT10) (Suprabasal Epithelial Marker) Antibody - With BSA and Azide -
Additional Information**

Gene ID 3858

Other Names

Keratin, type I cytoskeletal 10, Cytokeratin-10, CK-10, Keratin-10, K10, KRT10, KPP

Format

200ug/ml of Ab purified from Bioreactor Concentrate by Protein A/G. Prepared in 10mM PBS with 0.05% BSA & 0.05% azide. Also available WITHOUT BSA & azide at 1.0mg/ml.

Storage

Store at 2 to 8°C. Antibody is stable for 24 months.

Precautions

Cytokeratin 10 (KRT10) (Suprabasal Epithelial Marker) Antibody - With BSA and Azide is for research use only and not for use in diagnostic or therapeutic procedures.

**Cytokeratin 10 (KRT10) (Suprabasal Epithelial Marker) Antibody - With BSA and Azide -
Protein Information**

Name KRT10

Synonyms KPP

Function

Plays a role in the establishment of the epidermal barrier on plantar skin (By similarity). Involved in the maintenance of cell layer development and keratin filament bundles in suprabasal cells of the epithelium (By similarity).

Cellular Location

Secreted, extracellular space. Cell surface. Cytoplasm

Tissue Location

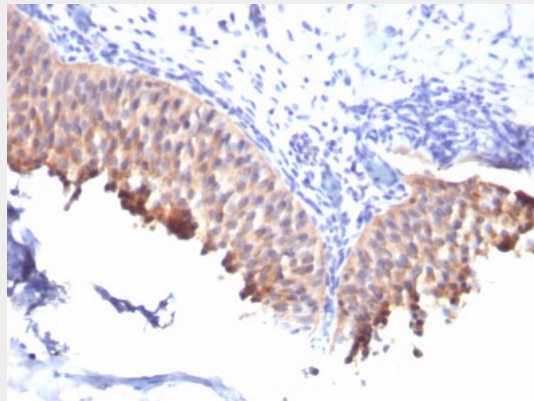
Seen in all suprabasal cell layers including stratum corneum. Expressed on the surface of lung cell lines (PubMed:19627498). Localized on the surface of desquamated nasal epithelial cells (at protein level) (PubMed:12427098)

Cytokeratin 10 (KRT10) (Suprabasal Epithelial Marker) Antibody - With BSA and Azide - Protocols

Provided below are standard protocols that you may find useful for product applications.

- [Western Blot](#)
- [Blocking Peptides](#)
- [Dot Blot](#)
- [Immunohistochemistry](#)
- [Immunofluorescence](#)
- [Immunoprecipitation](#)
- [Flow Cytometry](#)
- [Cell Culture](#)

Cytokeratin 10 (KRT10) (Suprabasal Epithelial Marker) Antibody - With BSA and Azide - Images



Formalin-fixed, paraffin-embedded human Bladder Carcinoma stained with Cytokeratin 10 Monoclonal Antibody (SPM261).

Cytokeratin 10 (KRT10) (Suprabasal Epithelial Marker) Antibody - With BSA and Azide - Background

This MAb recognizes a protein of 56.5kDa, identified as cytokeratin 10 (CK10). CK10 is expressed in all suprabasal layers of the epidermis. In the epidermis, expression of CK10 strictly parallels the extent of differentiation; it is absent in the basal layer, appears in the first suprabasal layers and increases in concentration towards the granular layer. However, CK10 is rarely detected in early stages of vulvar squamous carcinomas (tumors less than 2 cm, clinical stage I) regardless of the tumor grade. In larger and more advanced tumors (greater than 2 cm, clinical stages II and III), CK10 is detected very frequently. Expression of CK10 is related to maturation of malignant keratinocytes, being preferentially detected in more-differentiated parts.

Cytokeratin 10 (KRT10) (Suprabasal Epithelial Marker) Antibody - With BSA and Azide - References

Barrott JJ et al. Proc Natl Acad Sci U S A 108:12752-7 (2011) | Reichelt J et al. J Cell Sci 110 (Pt 18):2175-86 (1997)