

**Involucrin (Squamous Cell Terminal Differentiation Marker) Antibody - With BSA and Azide**

Mouse Monoclonal Antibody [Clone SPM259 ]  
Catalog # AH10542

**Specification**

---

**Involucrin (Squamous Cell Terminal Differentiation Marker) Antibody - With BSA and Azide - Product Information**

Application	,14,3,4,
Primary Accession	<a href="#">P07476</a>
Other Accession	<a href="#">3713</a> , <a href="#">516439</a>
Reactivity	Human, Pig, Dog
Host	Mouse
Clonality	Monoclonal
Isotype	Mouse / IgG1, kappa
Calculated MW	66-170kDa KDa

**Involucrin (Squamous Cell Terminal Differentiation Marker) Antibody - With BSA and Azide - Additional Information**

Gene ID 3713

**Other Names**  
Involucrin, IVL

**Format**

200ug/ml of Ab purified from Bioreactor Concentrate by Protein A/G. Prepared in 10mM PBS with 0.05% BSA & 0.05% azide. Also available WITHOUT BSA & azide at 1.0mg/ml.

**Storage**

Store at 2 to 8°C. Antibody is stable for 24 months.

**Precautions**

Involucrin (Squamous Cell Terminal Differentiation Marker) Antibody - With BSA and Azide is for research use only and not for use in diagnostic or therapeutic procedures.

**Involucrin (Squamous Cell Terminal Differentiation Marker) Antibody - With BSA and Azide - Protein Information**

**Name** IVL

**Function**

Part of the insoluble cornified cell envelope (CE) of stratified squamous epithelia.

**Cellular Location**

Cytoplasm. Note=Constituent of the scaffolding of the cornified envelope

**Tissue Location**

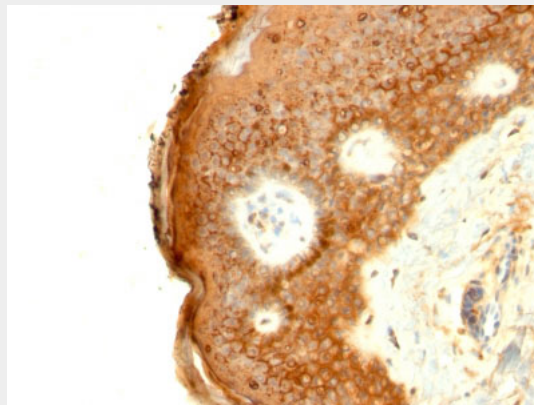
Keratinocytes of epidermis and other stratified squamous epithelia

### **Involucrin (Squamous Cell Terminal Differentiation Marker) Antibody - With BSA and Azide - Protocols**

Provided below are standard protocols that you may find useful for product applications.

- [Western Blot](#)
- [Blocking Peptides](#)
- [Dot Blot](#)
- [Immunohistochemistry](#)
- [Immunofluorescence](#)
- [Immunoprecipitation](#)
- [Flow Cytometry](#)
- [Cell Culture](#)

### **Involucrin (Squamous Cell Terminal Differentiation Marker) Antibody - With BSA and Azide - Images**



Formalin-fixed, paraffin-embedded human Skin stained with Involucrin Monoclonal Antibody (SPM259)

### **Involucrin (Squamous Cell Terminal Differentiation Marker) Antibody - With BSA and Azide - Background**

It recognizes a protein of 66kDa-170kDa, identified as involucrin. In Western blotting of cultured human keratinocytes, this MAb reacts with a 120kDa protein. It stains the involucrin in a variety of sizes: 170kDa in MCF-7 cells, a doublet of ~115kDa and 150kDa in gorilla and owl monkey, 66kDa in dog, and a doublet of 105kDa in pig. Its epitope maps between codon 421-568 of human involucrin. Involucrin is expressed in a range of stratified squamous epithelia, including the cornea, which lacks a distinct cornified layer. In normal epidermis, it is first expressed in the upper spinous layers, and in keratinocyte cultures, all cells that have left the basal layer express it. Involucrin expression is altered in pathological conditions: in psoriasis and other benign epidermal hyperplasias, involucrin expression begins closer to the basal layer than normal; expression is abnormal in squamous cell carcinomas and premalignant lesions, and is reduced in severe dysplasias of the larynx and cervix.

### **Involucrin (Squamous Cell Terminal Differentiation Marker) Antibody - With BSA and Azide - References**

Hudson DL, et. al. Hybridoma, 1992, 11:367-79