

**Prostate Specific Antigen (PSA) Antibody - With BSA and Azide
Mouse Monoclonal Antibody [Clone SPM352]
Catalog # AH10527**

Specification

Prostate Specific Antigen (PSA) Antibody - With BSA and Azide - Product Information

Application	,14,3,4,
Primary Accession	P07288
Other Accession	354 , 171995
Reactivity	Human
Host	Mouse
Clonality	Monoclonal
Isotype	Mouse / IgG1, kappa
Calculated MW	33-34kDa KDa

Prostate Specific Antigen (PSA) Antibody - With BSA and Azide - Additional Information

Gene ID 354

Other Names

Prostate-specific antigen, PSA, 3.4.21.77, Gamma-seminoprotein, Semin, Kallikrein-3, P-30 antigen, Semenogelase, KLK3, APS

Format

200ug/ml of Ab purified from Bioreactor Concentrate by Protein A/G. Prepared in 10mM PBS with 0.05% BSA & 0.05% azide. Also available WITHOUT BSA & azide at 1.0mg/ml.

Storage

Store at 2 to 8°C. Antibody is stable for 24 months.

Precautions

Prostate Specific Antigen (PSA) Antibody - With BSA and Azide is for research use only and not for use in diagnostic or therapeutic procedures.

Prostate Specific Antigen (PSA) Antibody - With BSA and Azide - Protein Information

Name KLK3

Synonyms APS

Function

Hydrolyzes semenogelin-1 thus leading to the liquefaction of the seminal coagulum.

Cellular Location

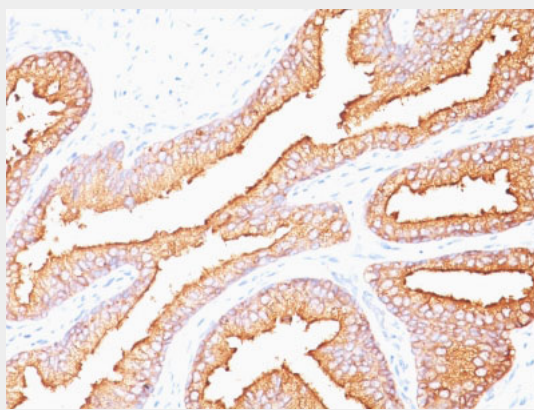
Secreted.

Prostate Specific Antigen (PSA) Antibody - With BSA and Azide - Protocols

Provided below are standard protocols that you may find useful for product applications.

- [Western Blot](#)
- [Blocking Peptides](#)
- [Dot Blot](#)
- [Immunohistochemistry](#)
- [Immunofluorescence](#)
- [Immunoprecipitation](#)
- [Flow Cytometry](#)
- [Cell Culture](#)

Prostate Specific Antigen (PSA) Antibody - With BSA and Azide - Images



Formalin-fixed, paraffin-embedded human Prostate Carcinoma stained with PSA Monoclonal Antibody (SPM352).

Prostate Specific Antigen (PSA) Antibody - With BSA and Azide - Background

Recognizes a single protein of 33-34kDa, identified as the prostate specific antigen (PSA). This MAb is highly specific to PSA and stains prostatic secretory and ductal epithelium in both normal and neoplastic tissues. PSA is a chymotrypsin-like serine protease (kallikrein family) exclusively produced by the prostate epithelium, and abundant in seminal fluid. PSA can be detected in the sera of patients with prostatic carcinoma. It is predominantly complexed to a liver-derived serine protease inhibitor, alpha-1-antichymotrypsin (ACT). A higher proportion of serum PSA is complexed to ACT in prostate cancer than in benign prostate hyperplasia.

Prostate Specific Antigen (PSA) Antibody - With BSA and Azide - References

ISOBM TD-3 Workshop, Tum. Biol. 20 (S1), pp 1-94, Eds. Rye P.D. et al. (1999)