

MART-1 / Melan-A / MLANA (Melanoma Marker) Antibody - With BSA and Azide
Mouse Monoclonal Antibody [Clone SPM342]
Catalog # AH10452

Specification

MART-1 / Melan-A / MLANA (Melanoma Marker) Antibody - With BSA and Azide - Product Information

| | |
|-------------------|---|
| Application | ,1,14,3,4, |
| Primary Accession | O16655 |
| Other Accession | 2315 , 154069 |
| Reactivity | Human, Horse |
| Host | Mouse |
| Clonality | Monoclonal |
| Isotype | Mouse / IgG2b, kappa |
| Calculated MW | 20-22kDa (doublet) KDa |

MART-1 / Melan-A / MLANA (Melanoma Marker) Antibody - With BSA and Azide - Additional Information

Gene ID 2315

Other Names

Melanoma antigen recognized by T-cells 1, MART-1, Antigen LB39-AA, Antigen SK29-AA, Protein Melan-A, MLANA, MART1

Format

200ug/ml of Ab purified from Bioreactor Concentrate by Protein A/G. Prepared in 10mM PBS with 0.05% BSA & 0.05% azide. Also available WITHOUT BSA & azide at 1.0mg/ml.

Storage

Store at 2 to 8°C. Antibody is stable for 24 months.

Precautions

MART-1 / Melan-A / MLANA (Melanoma Marker) Antibody - With BSA and Azide is for research use only and not for use in diagnostic or therapeutic procedures.

MART-1 / Melan-A / MLANA (Melanoma Marker) Antibody - With BSA and Azide - Protein Information

Name MLANA

Synonyms MART1

Function

Involved in melanosome biogenesis by ensuring the stability of GPR143. Plays a vital role in the expression, stability, trafficking, and processing of melanocyte protein PMEL, which is critical to the formation of stage II melanosomes.

Cellular Location

Endoplasmic reticulum membrane; Single-pass type III membrane protein. Golgi apparatus. Golgi apparatus, trans-Golgi network membrane. Melanosome. Note=Also found in small vesicles and tubules dispersed over the entire cytoplasm. A small fraction of the protein is inserted into the membrane in an inverted orientation Inversion of membrane topology results in the relocalization of the protein from a predominant Golgi/post-Golgi area to the endoplasmic reticulum. Melanoma cells expressing the protein with an inverted membrane topology are more effectively recognized by specific cytolytic T-lymphocytes than those expressing the protein in its native membrane orientation

Tissue Location

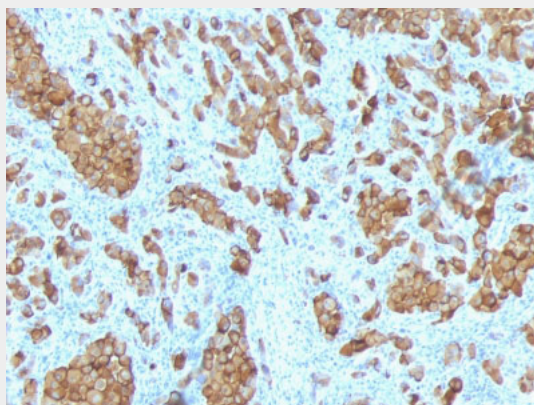
Expression is restricted to melanoma and melanocyte cell lines and retina

MART-1 / Melan-A / MLANA (Melanoma Marker) Antibody - With BSA and Azide - Protocols

Provided below are standard protocols that you may find useful for product applications.

- [Western Blot](#)
- [Blocking Peptides](#)
- [Dot Blot](#)
- [Immunohistochemistry](#)
- [Immunofluorescence](#)
- [Immunoprecipitation](#)
- [Flow Cytometry](#)
- [Cell Culture](#)

MART-1 / Melan-A / MLANA (Melanoma Marker) Antibody - With BSA and Azide - Images



Formalin-fixed, paraffin-embedded human Melanoma stained with MART-1 Ab (SPM342).

MART-1 / Melan-A / MLANA (Melanoma Marker) Antibody - With BSA and Azide - Background

This antibody recognizes a protein doublet of 20-22kDa, identified as MART-1 (Melanoma Antigen Recognized by T cells 1) or Melan-A. MART-1 is a newly identified melanocyte differentiation antigen recognized by autologous cytotoxic T lymphocytes. Seven other melanoma associated antigens recognized by autologous cytotoxic T cells include MAGE-1, MAGE-3, tyrosinase, gp100, gp75, BAGE-1, and GAGE-1. Subcellular fractionation shows that MART-1 is present in melanosomes and endoplasmic reticulum. This MAb labels melanomas and other tumors showing melanocytic differentiation. It is also a useful positive-marker for angiomyolipomas. It does not stain tumor cells of epithelial, lymphoid, glial, or mesenchymal origin.

**MART-1 / Melan-A / MLANA (Melanoma Marker) Antibody - With BSA and Azide -
References**

Kawakami Y, et. al. Journal of Immunological Methods, 1997, 202(1):13-25. | Marincola FM, et. al.
Journal of Immunotherapy with Emphasis on Tumor Immunology, 1996, 19(3):192-205