

Goat anti-CTGF Antibody
Peptide-affinity purified goat antibody
Catalog # AF4501a

Specification

Goat anti-CTGF Antibody - Product Information

Application	IF, IHC
Primary Accession	P29279
Other Accession	NP_001892.1
Reactivity	Human, Mouse, Rat, Pig, Dog, Bovine
Host	Goat
Clonality	Polyclonal
Calculated MW	38091

Goat anti-CTGF Antibody - Additional Information

Gene ID 1490

Other Names

CTGF; connective tissue growth factor; CCN2; HCS24; IGFBP8; MGC102839; NOV2; CCN family member 2; IBP-8; IGF-binding protein 8; IGFBP-8; OTTHUMP00000017213; hypertrophic chondrocyte-specific protein 24; insulin-like growth factor-binding protein 8

Format

Supplied at 0.5 mg/ml in Tris saline, 0.02% sodium azide, pH7.3 with 0.5% bovine serum albumin. Aliquot and store at -20°C. Minimize freezing and thawing.

Immunogen

Immunizing peptide overlaps disulphide bond

Storage

Maintain refrigerated at 2-8°C for up to 6 months. For long term storage store at -20°C in small aliquots to prevent freeze-thaw cycles.

Precautions

Goat anti-CTGF Antibody is for research use only and not for use in diagnostic or therapeutic procedures.

Goat anti-CTGF Antibody - Protein Information

Name CCN2 ([HGNC:2500](#))

Function

Major connective tissue chemoattractant secreted by vascular endothelial cells. Promotes proliferation and differentiation of chondrocytes. Mediates heparin- and divalent cation-dependent cell adhesion in many cell types including fibroblasts, myofibroblasts, endothelial and epithelial cells. Enhances fibroblast growth factor- induced DNA synthesis.

Cellular Location

Secreted, extracellular space, extracellular matrix {ECO:0000250|UniProtKB:P29268}. Secreted {ECO:0000250|UniProtKB:P29268}

Tissue Location

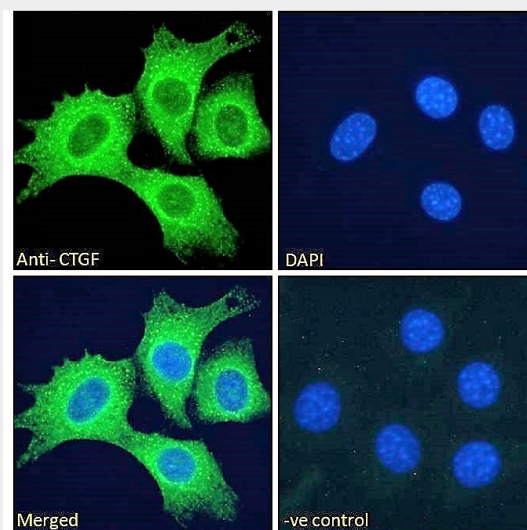
Expressed in bone marrow and thymic cells. Also expressed one of two Wilms tumors tested.

Goat anti-CTGF Antibody - Protocols

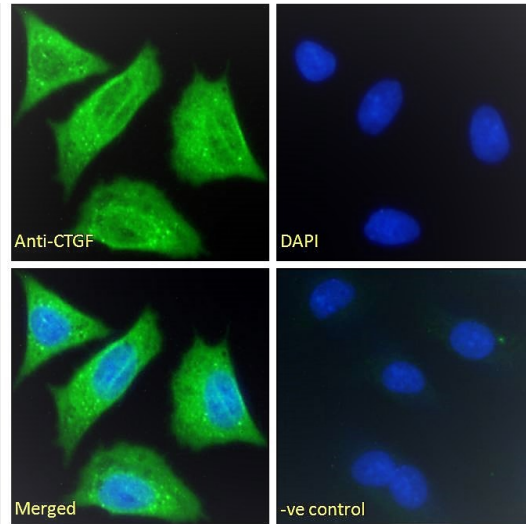
Provided below are standard protocols that you may find useful for product applications.

- [Western Blot](#)
- [Blocking Peptides](#)
- [Dot Blot](#)
- [Immunohistochemistry](#)
- [Immunofluorescence](#)
- [Immunoprecipitation](#)
- [Flow Cytometry](#)
- [Cell Culture](#)

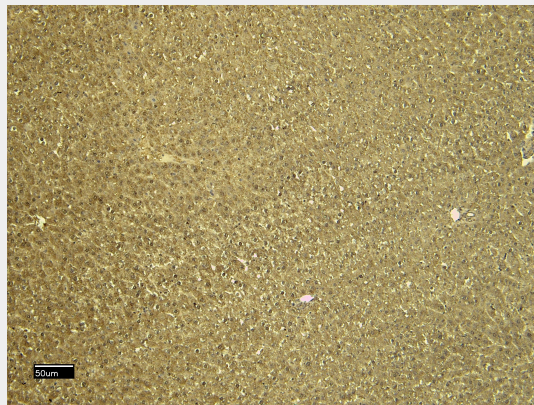
Goat anti-CTGF Antibody - Images



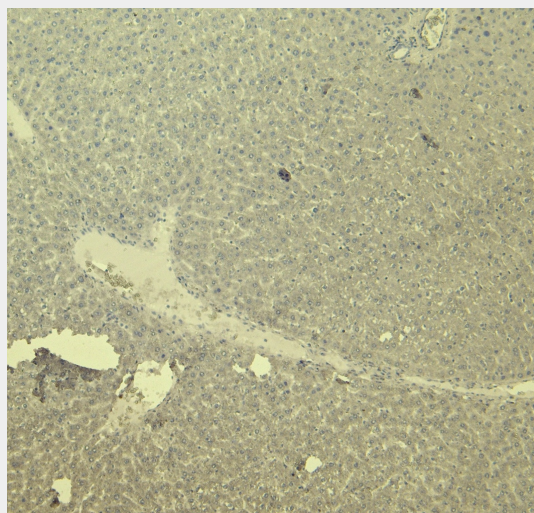
EB11760 Immunofluorescence analysis of paraformaldehyde fixed NIH3T3 cells, permeabilized with 0.15% Triton. Primary incubation 1hr (10ug/ml) followed by Alexa Fluor 488 secondary antibody (2ug/ml), showing cytoplasmic/membrane staining. The nuclear stain is DAPI (blue). Negative control: Unimmunized goat IgG (10ug/ml) followed by Alexa Fluor 488 secondary antibody (2ug/ml).



EB11760 Immunofluorescence analysis of paraformaldehyde fixed HepG2 cells, permeabilized with 0.15% Triton. Primary incubation 1hr (10ug/ml) followed by Alexa Fluor 488 secondary antibody (2ug/ml), showing cytoplasmic/membrane staining. The nuclear stain is DAPI (blue). Negative control: Unimmunized goat IgG (10ug/ml) followed by Alexa Fluor 488 secondary antibody (2ug/ml).



EB11760 (6µg/ml) staining of paraffin embedded Rat Liver. Heat induced antigen retrieval with citrate buffer pH 6, HRP-staining.



EB11760 Negative Control showing staining of paraffin embedded Rat Liver, with no primary

antibody.