

Goat Anti-IRF4 (aa393-407) Antibody
Peptide-affinity purified goat antibody
Catalog # AF4335a

Specification

Goat Anti-IRF4 (aa393-407) Antibody - Product Information

Application	WB, IHC, FC
Primary Accession	Q15306
Other Accession	NP_002451.2 , NP_001182215.1
Reactivity	Human, Rat
Host	Goat
Clonality	Polyclonal
Calculated MW	51772

Goat Anti-IRF4 (aa393-407) Antibody - Additional Information

Gene ID 3662

Other Names

interferon regulatory factor 4, LSIRF, multiple myeloma oncogene 1, MUM1, IRF4

Format

Supplied at 0.5 mg/ml in Tris saline, 0.02% sodium azide, pH7.3 with 0.5% bovine serum albumin.

Immunogen

Peptide with sequence C-DPQRQRKLITAHVEP, from the internal region (near C Terminus) of the protein sequence according to NP_002451.2; NP_001182215.1.

Storage

Maintain refrigerated at 2-8°C for up to 6 months. For long term storage store at -20°C in small aliquots to prevent freeze-thaw cycles.

Precautions

Goat Anti-IRF4 (aa393-407) Antibody is for research use only and not for use in diagnostic or therapeutic procedures.

Goat Anti-IRF4 (aa393-407) Antibody - Protein Information

Name IRF4

Synonyms MUM1

Function

Transcriptional activator. Binds to the interferon-stimulated response element (ISRE) of the MHC class I promoter. Binds the immunoglobulin lambda light chain enhancer, together with PU.1. Probably plays a role in ISRE-targeted signal transduction mechanisms specific to lymphoid cells. Involved in CD8(+) dendritic cell differentiation by forming a complex with the BATF-JUNB

heterodimer in immune cells, leading to recognition of AICE sequence (5'-TGAnTCA/GAAA- 3'), an immune-specific regulatory element, followed by cooperative binding of BATF and IRF4 and activation of genes (By similarity).

Cellular Location

Nucleus.

Tissue Location

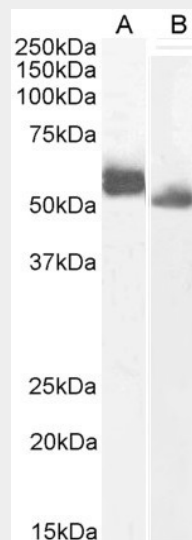
Lymphoid cells.

Goat Anti-IRF4 (aa393-407) Antibody - Protocols

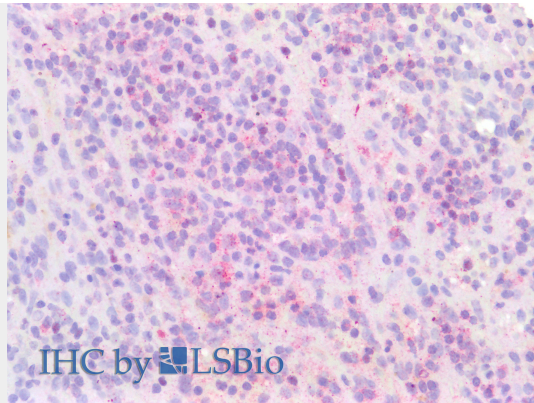
Provided below are standard protocols that you may find useful for product applications.

- [Western Blot](#)
- [Blocking Peptides](#)
- [Dot Blot](#)
- [Immunohistochemistry](#)
- [Immunofluorescence](#)
- [Immunoprecipitation](#)
- [Flow Cytometry](#)
- [Cell Culture](#)

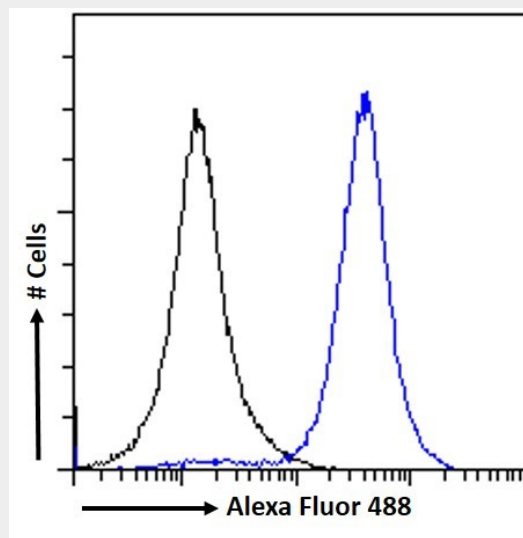
Goat Anti-IRF4 (aa393-407) Antibody - Images



EB11331 (0.3µg/ml) staining of Human (A) and (0.1ug/ml) Rat (B) Spleen lysate (35µg protein in RIPA buffer).



EB11331 (5µg/ml) staining of paraffin embedded Human Spleen. Steamed antigen retrieval with citrate buffer pH 6, AP-staining.



EB11331 Flow cytometric analysis of paraformaldehyde fixed A431 cells (blue line), permeabilized with 0.5% Triton. Primary incubation 1hr (10ug/ml) followed by Alexa Fluor 488 secondary antibody (1ug/ml). IgG control: Unimmunized goat IgG (black line) fo