

Goat Anti-NEFL (aa330-343) Antibody
Purified Goat Polyclonal Antibody
Catalog # AF4310a

Specification

Goat Anti-NEFL (aa330-343) Antibody - Product Information

Application	WB
Primary Accession	P07196
Other Accession	NP_006149.2 , 4747 , 18039 (mouse) , 83613 (rat)
Reactivity	Human
Predicted	Mouse, Rat, Pig, Dog
Host	Goat
Clonality	Polyclonal
Calculated MW	61517

Goat Anti-NEFL (aa330-343) Antibody - Additional Information

Gene ID 4747

Other Names

NEFL; neurofilament, light polypeptide; CMT1F; CMT2E; NF-L; NF68; NFL; PPP1R110; light molecular weight neurofilament protein; neurofilament protein, light chain; neurofilament subunit NF-L; neurofilament triplet L protein; neurofilament, light polypeptid

Format

Supplied at 0.5 mg/ml in Tris saline, 0.02% sodium azide, pH7.3 with 0.5% bovine serum albumin. Aliquot and store at -20°C. Minimize freezing and thawing.

Immunogen

Peptide with sequence C-EKQLQELEDKQNAD, from the internal region of the protein sequence according to NP_006149.2.

Storage

Maintain refrigerated at 2-8°C for up to 6 months. For long term storage store at -20°C in small aliquots to prevent freeze-thaw cycles.

Precautions

Goat Anti-NEFL (aa330-343) Antibody is for research use only and not for use in diagnostic or therapeutic procedures.

Goat Anti-NEFL (aa330-343) Antibody - Protein Information

Name NEFL

Synonyms NF68, NFL

Function

Neurofilaments usually contain three intermediate filament proteins: NEFL, NEFM, and NEFH which are involved in the maintenance of neuronal caliber. May additionally cooperate with the neuronal intermediate filament proteins PRPH and INA to form neuronal filamentous networks (By similarity).

Cellular Location

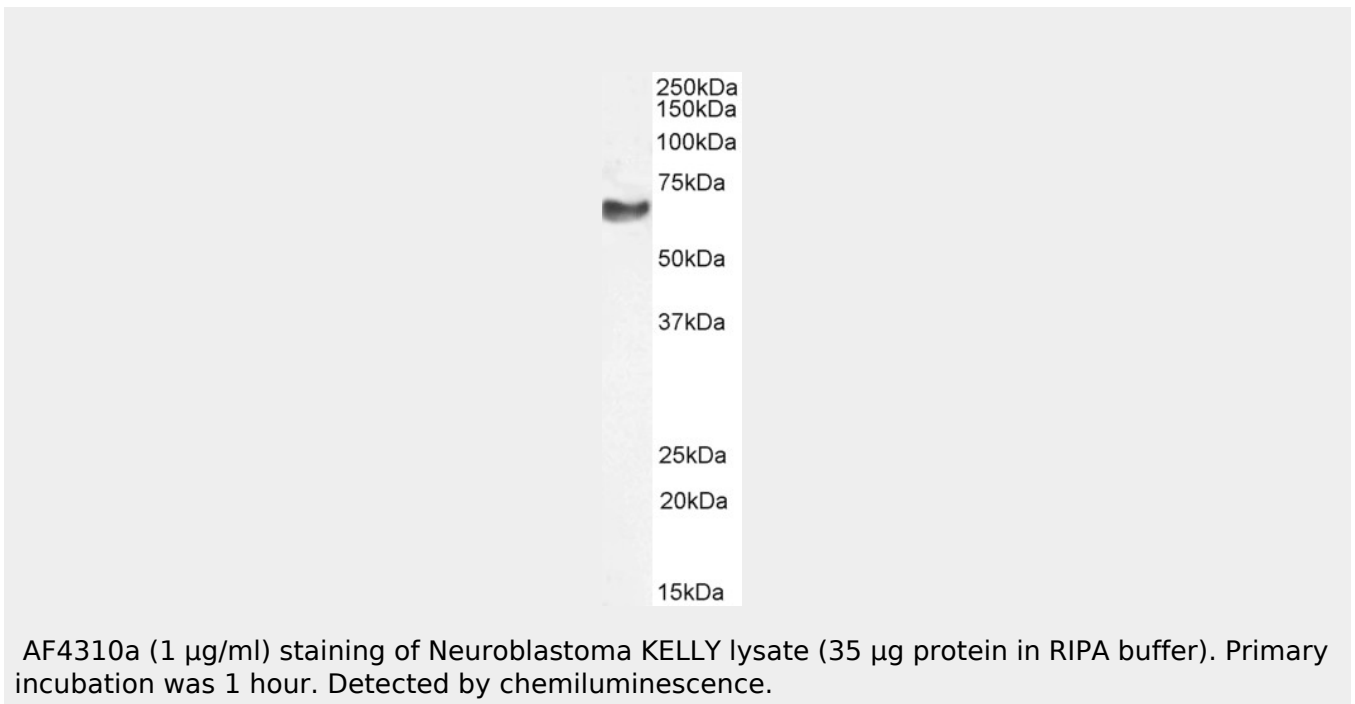
Cell projection, axon {ECO:0000250|UniProtKB:P08551}. Cytoplasm, cytoskeleton {ECO:0000250|UniProtKB:P08551}

Goat Anti-NEFL (aa330-343) Antibody - Protocols

Provided below are standard protocols that you may find useful for product applications.

- [Western Blot](#)
- [Blocking Peptides](#)
- [Dot Blot](#)
- [Immunohistochemistry](#)
- [Immunofluorescence](#)
- [Immunoprecipitation](#)
- [Flow Cytometry](#)
- [Cell Culture](#)

Goat Anti-NEFL (aa330-343) Antibody - Images



Goat Anti-NEFL (aa330-343) Antibody - References

Lu CH, Macdonald-Wallis C, Gray E, Pearce N, Petzold A, Norgren N, Giovannoni G, Fratta P, Sidle K, Fish M, Orrell R, Howard R, Talbot K, Greensmith L, Kuhle J, Turner MR, Malaspina A.