

Goat Anti-Endophilin-A1 / SH3GL2 Antibody (internal region), Biotinylated
Catalog # AF4294a

Specification

Goat Anti-Endophilin-A1 / SH3GL2 Antibody (internal region), Biotinylated - Product Information

Application	WB
Primary Accession	Q99962
Other Accession	NP_003017.1 , 6456
Reactivity	Human
Predicted	Human, Pig
Host	Goat
Isotype	IgG
Calculated MW	39962

Goat Anti-Endophilin-A1 / SH3GL2 Antibody (internal region), Biotinylated - Additional Information

Gene ID 6456

Other Names

Endophilin-A1, EEN-B1, Endophilin-1, SH3 domain protein 2A, SH3 domain-containing GRB2-like protein 2, SH3GL2, CNSA2, SH3D2A

Storage

Maintain refrigerated at 2-8°C for up to 6 months. For long term storage store at -20°C in small aliquots to prevent freeze-thaw cycles.

Precautions

Goat Anti-Endophilin-A1 / SH3GL2 Antibody (internal region), Biotinylated is for research use only and not for use in diagnostic or therapeutic procedures.

Goat Anti-Endophilin-A1 / SH3GL2 Antibody (internal region), Biotinylated - Protein Information

Name SH3GL2

Synonyms CNSA2, SH3D2A

Function

Implicated in synaptic vesicle endocytosis. May recruit other proteins to membranes with high curvature. Required for BDNF-dependent dendrite outgrowth. Cooperates with SH3GL2 to mediate BDNF-NTRK2 early endocytic trafficking and signaling from early endosomes.

Cellular Location

Cytoplasm {ECO:0000250|UniProtKB:O35179}. Membrane {ECO:0000250|UniProtKB:O35179}; Peripheral membrane protein {ECO:0000250|UniProtKB:O35179}. Early endosome

{ECO:0000250|UniProtKB:Q62420}. Presynapse {ECO:0000250|UniProtKB:O35179}

Tissue Location

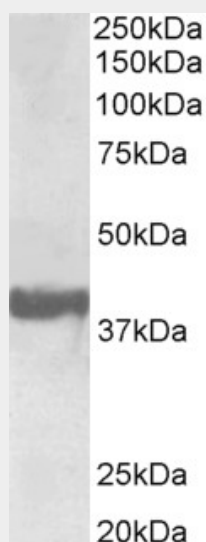
Brain, mostly in frontal cortex. Expressed at high level in fetal cerebellum

Goat Anti-Endophilin-A1 / SH3GL2 Antibody (internal region), Biotinylated - Protocols

Provided below are standard protocols that you may find useful for product applications.

- [Western Blot](#)
- [Blocking Peptides](#)
- [Dot Blot](#)
- [Immunohistochemistry](#)
- [Immunofluorescence](#)
- [Immunoprecipitation](#)
- [Flow Cytometry](#)
- [Cell Culture](#)

Goat Anti-Endophilin-A1 / SH3GL2 Antibody (internal region), Biotinylated - Images



Biotinylated AF4294a (0.3 $\mu\text{g/ml}$) staining of Human Frontal Cortex lysate (35 μg protein in RIPA buffer). Primary incubation was 1 hour. Detected by chemiluminescence.