

**Anti-Kinesin 1 / UKHC Antibody (C-term), Biotinylated**  
Catalog # AF4276a**Specification****Anti-Kinesin 1 / UKHC Antibody (C-term), Biotinylated - Product Information**

Application	WB
Primary Accession	<a href="#">P33176</a>
Other Accession	<a href="#">3799</a> , <a href="#">NP_004512.1</a> , <a href="#">16573</a> , <a href="#">117550</a>
Reactivity	Human, Dog
Predicted	Human, Mouse, Rat, Dog
Calculated MW	109685

**Anti-Kinesin 1 / UKHC Antibody (C-term), Biotinylated - Additional Information****Gene ID** 3799**Other Names**

cytoskeletal; ERM; acetylprotein

**Storage**

Maintain refrigerated at 2-8°C for up to 6 months. For long term storage store at -20°C in small aliquots to prevent freeze-thaw cycles.

**Precautions**

Anti-Kinesin 1 / UKHC Antibody (C-term), Biotinylated is for research use only and not for use in diagnostic or therapeutic procedures.

**Anti-Kinesin 1 / UKHC Antibody (C-term), Biotinylated - Protein Information****Name** KIF5B ([HGNC:6324](#))**Synonyms** KNS, KNS1**Function**

Microtubule-dependent motor required for normal distribution of mitochondria and lysosomes. Can induce formation of neurite-like membrane protrusions in non-neuronal cells in a ZFYVE27-dependent manner (By similarity). Regulates centrosome and nuclear positioning during mitotic entry. During the G2 phase of the cell cycle in a BICD2- dependent manner, antagonizes dynein function and drives the separation of nuclei and centrosomes (PubMed:[20386726](http://www.uniprot.org/citations/20386726)). Required for anterograde axonal transportation of MAPK8IP3/JIP3 which is essential for MAPK8IP3/JIP3 function in axon elongation (By similarity). Through binding with PLEKHM2 and ARL8B, directs lysosome movement toward microtubule plus ends (Probable). Involved in NK cell-mediated cytotoxicity. Drives the polarization of cytolytic granules and microtubule-organizing centers (MTOCs) toward the immune synapse between effector NK lymphocytes and target cells (PubMed:[24088571](http://www.uniprot.org/citations/24088571)).

### Cellular Location

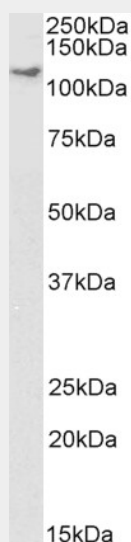
Cytoplasm, cytoskeleton {ECO:0000250|UniProtKB:Q2PQA9}. Cytolytic granule membrane. Lysosome membrane; Peripheral membrane protein; Cytoplasmic side Note=Uniformly distributed between soma and neurites in hippocampal neurons. {ECO:0000250|UniProtKB:Q2PQA9}

### Anti-Kinesin 1 / UKHC Antibody (C-term), Biotinylated - Protocols

Provided below are standard protocols that you may find useful for product applications.

- [Western Blot](#)
- [Blocking Peptides](#)
- [Dot Blot](#)
- [Immunohistochemistry](#)
- [Immunofluorescence](#)
- [Immunoprecipitation](#)
- [Flow Cytometry](#)
- [Cell Culture](#)

### Anti-Kinesin 1 / UKHC Antibody (C-term), Biotinylated - Images



Biotinylated antibody (1  $\mu\text{g/ml}$ ) staining of HeLa lysate (35  $\mu\text{g}$  protein in RIPA buffer), exactly mirroring its parental non-biotinylated product. Primary incubation was 1 hour. Detected by chemiluminescence, using streptavidin-HRP and using NAP blocker as a substitute for skimmed milk.