

**Goat Anti-IL13RA2 Antibody (internal region)**  
**Purified Goat Polyclonal Antibody**  
**Catalog # AF4271a**

**Specification**

---

**Goat Anti-IL13RA2 Antibody (internal region) - Product Information**

Application	WB
Primary Accession	<a href="#">Q14627</a>
Other Accession	<a href="#">NP_000631.1</a>
Reactivity	Human
Predicted	Human
Host	Goat
Clonality	Polyclonal
Concentration	0.5
Calculated MW	44176

**Goat Anti-IL13RA2 Antibody (internal region) - Additional Information**

**Gene ID** 3598

**Other Names**

IL13RA2; interleukin 13 receptor, alpha 2; CD213A2; CT19; IL-13R; IL13BP; IL-13 receptor subunit alpha-2; IL-13R subunit alpha-2; IL-13R-alpha-2; IL-13RA2; cancer/testis antigen 19; interleukin 13 binding protein; interleukin 13 receptor alpha 2 chain; in

**Format**

Supplied at 0.5 mg/ml in Tris saline, 0.02% sodium azide, pH7.3 with 0.5% bovine serum albumin. Aliquot and store at -20°C. Minimize freezing and thawing.

**Immunogen**

Peptide with sequence C-DLNKGIEAKIHT , from the internal region of the protein sequence according to NP\_000631.1.

**Storage**

Maintain refrigerated at 2-8°C for up to 6 months. For long term storage store at -20°C in small aliquots to prevent freeze-thaw cycles.

**Precautions**

Goat Anti-IL13RA2 Antibody (internal region) is for research use only and not for use in diagnostic or therapeutic procedures.

**Goat Anti-IL13RA2 Antibody (internal region) - Protein Information**

**Name** IL13RA2

**Synonyms** IL13R

**Function**

Binds as a monomer with high affinity to interleukin-13 (IL13), but not to interleukin-4 (IL4).

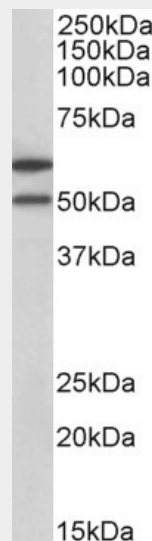
**Cellular Location**

Membrane; Single-pass type I membrane protein.

**Goat Anti-IL13RA2 Antibody (internal region) - Protocols**

Provided below are standard protocols that you may find useful for product applications.

- [Western Blot](#)
- [Blocking Peptides](#)
- [Dot Blot](#)
- [Immunohistochemistry](#)
- [Immunofluorescence](#)
- [Immunoprecipitation](#)
- [Flow Cytometry](#)
- [Cell Culture](#)

**Goat Anti-IL13RA2 Antibody (internal region) - Images**

AF4271a (1 µg/ml) staining of HeLa lysate (35 µg protein in RIPA buffer). Primary incubation was 1 hour. Detected by chemiluminescence.

**Goat Anti-IL13RA2 Antibody (internal region) - References**

IL-13 antibodies influence IL-13 clearance in humans by modulating scavenger activity of IL-13R $\alpha$ 2. Kasaian MT, Raible D, Marquette K, Cook TA, Zhou S, Tan XY, Tchistiakova L. Journal of immunology (Baltimore, Md. : 1950) 2011 Jul 187 (1): 561-9.