

Goat Anti-EPHX2 Antibody (internal region)
Purified Goat Polyclonal Antibody
Catalog # AF4243a

Specification

Goat Anti-EPHX2 Antibody (internal region) - Product Information

Application	WB
Primary Accession	P34913
Other Accession	NP_001970.2 , NP_001243411.1 , NP_001243412.1
Reactivity	Human
Predicted	Human
Host	Goat
Clonality	Polyclonal
Concentration	0.5
Calculated MW	62616

Goat Anti-EPHX2 Antibody (internal region) - Additional Information

Gene ID 2053

Other Names

EPHX2; epoxide hydrolase 2, cytoplasmic; CEH; SEH; bifunctional epoxide hydrolase 2; epoxide hydratase; epoxide hydrolase 2, cytosolic; epoxide hydrolase, soluble

Format

Supplied at 0.5 mg/ml in Tris saline, 0.02% sodium azide, pH7.3 with 0.5% bovine serum albumin. Aliquot and store at -20°C. Minimize freezing and thawing.

Immunogen

Peptide with sequence C-SHGYVTVKPRVRLH, from the internal region of the protein sequence according to [NP_001970.2](#); [NP_001243411.1](#); [NP_001243412.1](#).

Storage

Maintain refrigerated at 2-8°C for up to 6 months. For long term storage store at -20°C in small aliquots to prevent freeze-thaw cycles.

Precautions

Goat Anti-EPHX2 Antibody (internal region) is for research use only and not for use in diagnostic or therapeutic procedures.

Goat Anti-EPHX2 Antibody (internal region) - Protein Information

Name EPHX2 ([HGNC:3402](#))

Function

Bifunctional enzyme (PubMed:

target="_blank">12574510). The C-terminal domain has epoxide hydrolase activity and acts on epoxides (alkene oxides, oxiranes) and arene oxides (PubMed:12574510, PubMed:12869654, PubMed:22798687). Plays a role in xenobiotic metabolism by degrading potentially toxic epoxides (By similarity). Also determines steady- state levels of physiological mediators (PubMed:12574510, PubMed:12869654, PubMed:21217101, PubMed:22798687).

Cellular Location

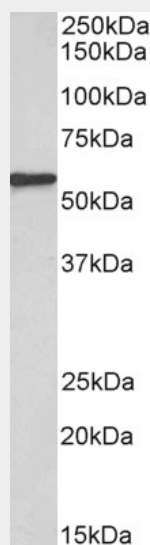
Cytoplasm. Peroxisome.

Goat Anti-EPHX2 Antibody (internal region) - Protocols

Provided below are standard protocols that you may find useful for product applications.

- [Western Blot](#)
- [Blocking Peptides](#)
- [Dot Blot](#)
- [Immunohistochemistry](#)
- [Immunofluorescence](#)
- [Immunoprecipitation](#)
- [Flow Cytometry](#)
- [Cell Culture](#)

Goat Anti-EPHX2 Antibody (internal region) - Images



AF4243a (0.3 µg/ml) staining of Human Kidney lysate (35 µg protein in RIPA buffer). Primary incubation was 1 hour. Detected by chemiluminescence.

Goat Anti-EPHX2 Antibody (internal region) - References

Soluble epoxide hydrolase dimerization is required for hydrolase activity. Nelson JW, Subrahmanyam RM, Summers SA, Xiao X, Alkayed NJ. The Journal of biological chemistry 2013 Mar

288 (11): 7697-703.