

Goat Anti-CSNK2B Antibody (internal region)
Purified Goat Polyclonal Antibody
Catalog # AF4237a

Specification

Goat Anti-CSNK2B Antibody (internal region) - Product Information

Application	WB
Primary Accession	P67870
Other Accession	13001(mouse) , 81650(rat) , NP_001311.3 , NP_001269314.1
Reactivity	Human, Mouse
Predicted	Human, Mouse, Rat, Pig, Dog
Host	Goat
Clonality	Polyclonal
Concentration	0.5
Calculated MW	24942

Goat Anti-CSNK2B Antibody (internal region) - Additional Information

Gene ID 1460

Other Names

CSNK2B; casein kinase 2, beta polypeptide; CK2B; CK2N; CSK2B; G5A; CK II beta; Casein kinase II beta subunit; alternative name: G5a, phosvitin; casein kinase II subunit beta; phosvitin; protein G5a

Format

Supplied at 0.5 mg/ml in Tris saline, 0.02% sodium azide, pH7.3 with 0.5% bovine serum albumin. Aliquot and store at -20°C. Minimize freezing and thawing.

Immunogen

Peptide with sequence C-TGLNEQVPHYRQ, from the internal region of the protein sequence according to NP_001311.3; NP_001269314.1.

Storage

Maintain refrigerated at 2-8°C for up to 6 months. For long term storage store at -20°C in small aliquots to prevent freeze-thaw cycles.

Precautions

Goat Anti-CSNK2B Antibody (internal region) is for research use only and not for use in diagnostic or therapeutic procedures.

Goat Anti-CSNK2B Antibody (internal region) - Protein Information

Name CSNK2B ([HGNC:2460](#))

Synonyms CK2N, G5A

Function

Regulatory subunit of casein kinase II/CK2. As part of the kinase complex regulates the basal catalytic activity of the alpha subunit a constitutively active serine/threonine-protein kinase that phosphorylates a large number of substrates containing acidic residues C-terminal to the phosphorylated serine or threonine (PubMed:11239457, PubMed:16818610). Participates in Wnt signaling (By similarity).

Cellular Location

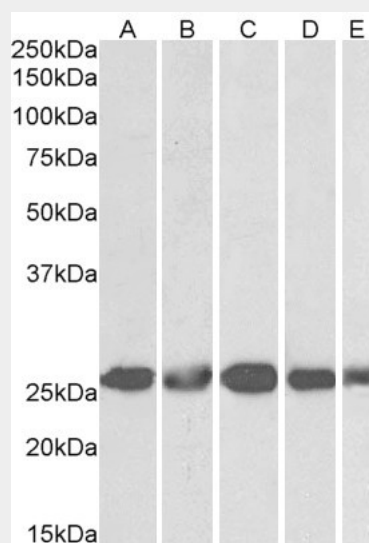
Nucleus.

Goat Anti-CSNK2B Antibody (internal region) - Protocols

Provided below are standard protocols that you may find useful for product applications.

- [Western Blot](#)
- [Blocking Peptides](#)
- [Dot Blot](#)
- [Immunohistochemistry](#)
- [Immunofluorescence](#)
- [Immunoprecipitation](#)
- [Flow Cytometry](#)
- [Cell Culture](#)

Goat Anti-CSNK2B Antibody (internal region) - Images



EB12709 (1 µg/ml) staining of NIH3T3 (A), HeLa (B), K562 (C), MCF7 (D) and HepG2 (E) lysates (35 µg protein in RIPA buffer). Primary incubation was 1 hour. Detected by chemiluminescence.

Goat Anti-CSNK2B Antibody (internal region) - References

Development of a stabilized form of the regulatory CK2beta subunit that inhibits cell proliferation. French AC, Luscher B, Litchfield DW. The Journal of biological chemistry 2007 Oct 282 (40): 29667-77.