

**Goat Anti-CSNK2B Antibody (internal region)**  
**Purified Goat Polyclonal Antibody**  
**Catalog # AF4235a**

**Specification**

---

**Goat Anti-CSNK2B Antibody (internal region) - Product Information**

Application	WB
Primary Accession	<a href="#">P67870</a>
Other Accession	<a href="#">13001(mouse)</a> , <a href="#">81650(rat)</a> , <a href="#">NP_001311.3</a> , <a href="#">NP_001269314.1</a>
Reactivity	Human, Mouse
Predicted	Human, Mouse, Rat, Pig, Dog
Host	Goat
Clonality	Polyclonal
Concentration	0.5
Calculated MW	24942

**Goat Anti-CSNK2B Antibody (internal region) - Additional Information**

**Gene ID** 1460

**Other Names**

CSNK2B; casein kinase 2, beta polypeptide; CK2B; CK2N; CSK2B; G5A; CK II beta; Casein kinase II beta subunit; alternative name: G5a, phosvitin; casein kinase II subunit beta; phosvitin; protein G5a

**Format**

Supplied at 0.5 mg/ml in Tris saline, 0.02% sodium azide, pH7.3 with 0.5% bovine serum albumin. Aliquot and store at -20°C. Minimize freezing and thawing.

**Immunogen**

Peptide with sequence C-PEYRPKRPNQFVPR, from the internal region of the protein sequence according to [NP\\_001311.3](#); [NP\\_001269314.1](#).

**Storage**

Maintain refrigerated at 2-8°C for up to 6 months. For long term storage store at -20°C in small aliquots to prevent freeze-thaw cycles.

**Precautions**

Goat Anti-CSNK2B Antibody (internal region) is for research use only and not for use in diagnostic or therapeutic procedures.

**Goat Anti-CSNK2B Antibody (internal region) - Protein Information**

**Name** CSNK2B ([HGNC:2460](#))

**Synonyms** CK2N, G5A

**Function**

Regulatory subunit of casein kinase II/CK2. As part of the kinase complex regulates the basal catalytic activity of the alpha subunit a constitutively active serine/threonine-protein kinase that phosphorylates a large number of substrates containing acidic residues C-terminal to the phosphorylated serine or threonine (PubMed: <a href="http://www.uniprot.org/citations/11239457" target="\_blank">11239457</a>, PubMed: <a href="http://www.uniprot.org/citations/16818610" target="\_blank">16818610</a>). Participates in Wnt signaling (By similarity).

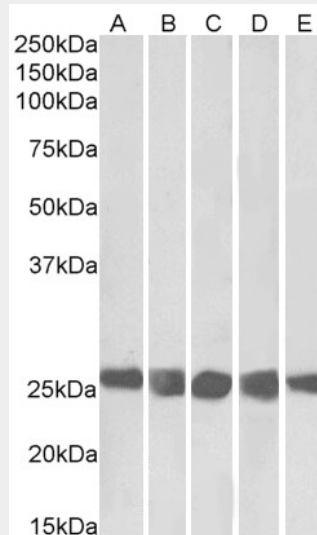
**Cellular Location**

Nucleus.

**Goat Anti-CSNK2B Antibody (internal region) - Protocols**

Provided below are standard protocols that you may find useful for product applications.

- [Western Blot](#)
- [Blocking Peptides](#)
- [Dot Blot](#)
- [Immunohistochemistry](#)
- [Immunofluorescence](#)
- [Immunoprecipitation](#)
- [Flow Cytometry](#)
- [Cell Culture](#)

**Goat Anti-CSNK2B Antibody (internal region) - Images**

AF4235a (0.3 µg/ml) staining of NIH3T3 (A), HeLa (B), K562 (C), MCF7 (D) and HepG2 (E) lysates (35 µg protein in RIPA buffer). Primary incubation was 1 hour. Detected by chemiluminescence.

**Goat Anti-CSNK2B Antibody (internal region) - References**

Development of a stabilized form of the regulatory CK2beta subunit that inhibits cell proliferation. French AC, Luscher B, Litchfield DW. The Journal of biological chemistry 2007 Oct 282 (40): 29667-77.