

Goat Anti-ICAM1 Antibody (internal region)
Purified Goat Polyclonal Antibody
Catalog # AF4233a

Specification

Goat Anti-ICAM1 Antibody (internal region) - Product Information

Application	WB
Primary Accession	P05362
Other Accession	NP_000192.2
Reactivity	Human
Predicted	Human
Host	Goat
Clonality	Polyclonal
Concentration	0.5
Calculated MW	57825

Goat Anti-ICAM1 Antibody (internal region) - Additional Information

Gene ID 3383

Other Names

ICAM1; intercellular adhesion molecule 1; BB2; CD54; P3.58; ICAM-1; cell surface glycoprotein P3.58; human rhinovirus receptor; intercellular adhesion molecule 1 (CD54), human rhinovirus receptor; major group rhinovirus receptor

Format

Supplied at 0.5 mg/ml in Tris saline, 0.02% sodium azide, pH7.3 with 0.5% bovine serum albumin. Aliquot and store at -20°C. Minimize freezing and thawing.

Immunogen

Peptide with sequence C-PNVILTKPEVSEGTE, from the internal region of the protein sequence according to NP_000192.2.

Storage

Maintain refrigerated at 2-8°C for up to 6 months. For long term storage store at -20°C in small aliquots to prevent freeze-thaw cycles.

Precautions

Goat Anti-ICAM1 Antibody (internal region) is for research use only and not for use in diagnostic or therapeutic procedures.

Goat Anti-ICAM1 Antibody (internal region) - Protein Information

Name ICAM1

Function

ICAM proteins are ligands for the leukocyte adhesion protein LFA-1 (integrin alpha-L/beta-2).

During leukocyte trans-endothelial migration, ICAM1 engagement promotes the assembly of endothelial apical cups through ARHGEF26/SGEF and RHOG activation.

Cellular Location

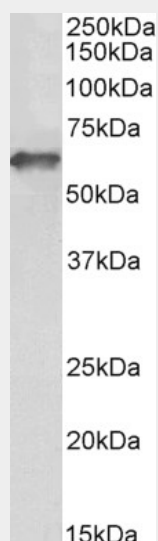
Membrane; Single-pass type I membrane protein.

Goat Anti-ICAM1 Antibody (internal region) - Protocols

Provided below are standard protocols that you may find useful for product applications.

- [Western Blot](#)
- [Blocking Peptides](#)
- [Dot Blot](#)
- [Immunohistochemistry](#)
- [Immunofluorescence](#)
- [Immunoprecipitation](#)
- [Flow Cytometry](#)
- [Cell Culture](#)

Goat Anti-ICAM1 Antibody (internal region) - Images



AF4233a (0.1 $\mu\text{g/ml}$) staining of HeLa lysate (35 μg protein in RIPA buffer). Primary incubation was 1 hour. Detected by chemiluminescence.

Goat Anti-ICAM1 Antibody (internal region) - References

Determining beta2-integrin and intercellular adhesion molecule 1 binding kinetics in tumor cell adhesion to leukocytes and endothelial cells by a gas-driven micropipette assay. Fu C, Tong C, Wang M, Gao Y, Zhang Y, Lü S, Liang S, Dong C, Long M. J Biol Chem. 2011 Oct 7;286(40):34777-87.