

Goat Anti-ALDH3A2 Antibody (internal region)
Purified Goat Polyclonal Antibody
Catalog # AF4205a

Specification

Goat Anti-ALDH3A2 Antibody (internal region) - Product Information

Application	IHC-P
Primary Accession	P51648
Other Accession	NP_001026976.1 , NP_000373.1
Reactivity	Human
Predicted	Human, Dog
Host	Goat
Clonality	Polyclonal
Concentration	0.5
Calculated MW	54848

Goat Anti-ALDH3A2 Antibody (internal region) - Additional Information

Gene ID 224

Other Names

ALDH3A2; aldehyde dehydrogenase 3 family, member A2; ALDH10; DKFZp686E23276; FALDH; FLJ20851; SLS; OTTHUMP00000065801; aldehyde dehydrogenase 10; aldehyde dehydrogenase 3A2; fatty aldehyde dehydrogenase

Format

Supplied at 0.5 mg/ml in Tris saline, 0.02% sodium azide, pH7.3 with 0.5% bovine serum albumin. Aliquot and store at -20°C. Minimize freezing and thawing.

Immunogen

Peptide with sequence C-SLKREGANKLRYPP, from the internal region of the protein sequence according to [NP_001026976.1](#); [NP_000373.1](#).

Storage

Maintain refrigerated at 2-8°C for up to 6 months. For long term storage store at -20°C in small aliquots to prevent freeze-thaw cycles.

Precautions

Goat Anti-ALDH3A2 Antibody (internal region) is for research use only and not for use in diagnostic or therapeutic procedures.

Goat Anti-ALDH3A2 Antibody (internal region) - Protein Information

Name ALDH3A2

Function

Catalyzes the oxidation of medium and long chain aliphatic aldehydes to fatty acids. Active on a

variety of saturated and unsaturated aliphatic aldehydes between 6 and 24 carbons in length (PubMed:18035827, PubMed:18182499, PubMed:22633490, PubMed:25047030, PubMed:9133646, PubMed:9662422). Responsible for conversion of the sphingosine 1-phosphate (S1P) degradation product hexadecenal to hexadecenoic acid (PubMed:22633490).

Cellular Location

Microsome membrane; Single-pass membrane protein. Endoplasmic reticulum membrane; Single-pass membrane protein; Cytoplasmic side {ECO:0000250|UniProtKB:P30839}

Tissue Location

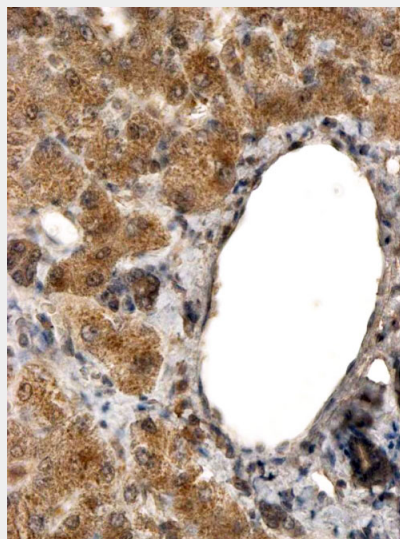
Detected in liver (at protein level).

Goat Anti-ALDH3A2 Antibody (internal region) - Protocols

Provided below are standard protocols that you may find useful for product applications.

- [Western Blot](#)
- [Blocking Peptides](#)
- [Dot Blot](#)
- [Immunohistochemistry](#)
- [Immunofluorescence](#)
- [Immunoprecipitation](#)
- [Flow Cytometry](#)
- [Cell Culture](#)

Goat Anti-ALDH3A2 Antibody (internal region) - Images



AF4205a (2 µg/ml) staining of paraffin embedded Human Liver. Steamed antigen retrieval with citrate buffer pH 6, HRP-staining.

Goat Anti-ALDH3A2 Antibody (internal region) - References

Abnormal fatty alcohol metabolism in cultured keratinocytes from patients with Sjögren-Larsson syndrome. Rizzo WB, Craft DA, Somer T, Carney G, Trafrova J, Simon M, Journal of lipid research 2008 Feb 49 (2): 410-9.