

**Goat Anti-Vimentin Antibody (C Terminus)**  
**Purified Goat Polyclonal Antibody**  
**Catalog # AF4203a**

**Specification**

---

**Goat Anti-Vimentin Antibody (C Terminus) - Product Information**

Application	<b>WB</b>
Primary Accession	<a href="#">P08670</a>
Other Accession	<a href="#">22352(mouse)</a> , <a href="#">81818(rat)</a> , <a href="#">NP_003371.2</a>
Reactivity	<b>Human</b>
Predicted	<b>Human, Mouse, Rat, Pig, Dog</b>
Host	<b>Goat</b>
Clonality	<b>Polyclonal</b>
Concentration	<b>0.5</b>
Calculated MW	<b>53652</b>

**Goat Anti-Vimentin Antibody (C Terminus) - Additional Information**

**Gene ID** 7431

**Other Names**

VIM; vimentin; FLJ36605

**Format**

Supplied at 0.5 mg/ml in Tris saline, 0.02% sodium azide, pH7.3 with 0.5% bovine serum albumin. Aliquot and store at -20°C. Minimize freezing and thawing.

**Immunogen**

Peptide with sequence C-QVINETSQHDDLE, from the C Terminus of the protein sequence according to NP\_003371.2.

**Storage**

Maintain refrigerated at 2-8°C for up to 6 months. For long term storage store at -20°C in small aliquots to prevent freeze-thaw cycles.

**Precautions**

Goat Anti-Vimentin Antibody (C Terminus) is for research use only and not for use in diagnostic or therapeutic procedures.

**Goat Anti-Vimentin Antibody (C Terminus) - Protein Information**

**Name** VIM ([HGNC:12692](#))

**Function**

Vimentins are class-III intermediate filaments found in various non-epithelial cells, especially mesenchymal cells. Vimentin is attached to the nucleus, endoplasmic reticulum, and mitochondria, either laterally or terminally. Plays a role in cell directional movement, orientation, cell sheet

organization and Golgi complex polarization at the cell migration front (By similarity). Protects SCRIB from proteasomal degradation and facilitates its localization to intermediate filaments in a cell contact-mediated manner (By similarity).

#### Cellular Location

Cytoplasm. Cytoplasm, cytoskeleton. Nucleus matrix {ECO:0000250|UniProtKB:P31000}. Cell membrane {ECO:0000250|UniProtKB:P20152}

#### Tissue Location

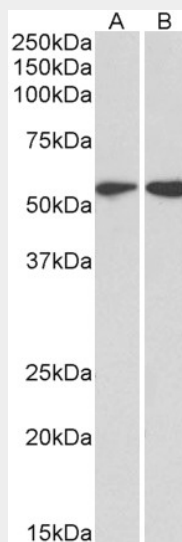
Highly expressed in fibroblasts, some expression in T- and B-lymphocytes, and little or no expression in Burkitt's lymphoma cell lines. Expressed in many hormone-independent mammary carcinoma cell lines.

### Goat Anti-Vimentin Antibody (C Terminus) - Protocols

Provided below are standard protocols that you may find useful for product applications.

- [Western Blot](#)
- [Blocking Peptides](#)
- [Dot Blot](#)
- [Immunohistochemistry](#)
- [Immunofluorescence](#)
- [Immunoprecipitation](#)
- [Flow Cytometry](#)
- [Cell Culture](#)

### Goat Anti-Vimentin Antibody (C Terminus) - Images



AF4203a (2 µg/ml) staining of HeLa (A) and Jurkat (B) lysates (35 µg protein in RIPA buffer). Primary incubation was 1 hour. Detected by chemiluminescence.

### Goat Anti-Vimentin Antibody (C Terminus) - References

Diagnostic value of anti-modified citrullinated vimentin in rheumatoid arthritis. Maraina CH, Nurdayana AK, Rusni D, Azwany Y. Int J Rheum Dis. 2010 Oct;13(4):335-9.