

Goat Anti-ITGA1 / VLA1 Antibody (internal region)
Purified Goat Polyclonal Antibody
Catalog # AF4202a

Specification

Goat Anti-ITGA1 / VLA1 Antibody (internal region) - Product Information

Application	WB
Primary Accession	P56199
Other Accession	NP_852478.1
Reactivity	Human
Predicted	Human
Host	Goat
Clonality	Polyclonal
Concentration	0.5
Calculated MW	130848

Goat Anti-ITGA1 / VLA1 Antibody (internal region) - Additional Information

Gene ID 3672

Other Names

ITGA1; integrin, alpha 1; CD49a; VLA1; CD49 antigen-like family member A; VLA-1; integrin alpha-1; laminin and collagen receptor; very late activation protein 1

Format

Supplied at 0.5 mg/ml in Tris saline, 0.02% sodium azide, pH7.3 with 0.5% bovine serum albumin. Aliquot and store at -20°C. Minimize freezing and thawing.

Immunogen

Peptide with sequence C-DKHDFQDSVRIT, from the internal region of the protein sequence according to NP_852478.1.

Storage

Maintain refrigerated at 2-8°C for up to 6 months. For long term storage store at -20°C in small aliquots to prevent freeze-thaw cycles.

Precautions

Goat Anti-ITGA1 / VLA1 Antibody (internal region) is for research use only and not for use in diagnostic or therapeutic procedures.

Goat Anti-ITGA1 / VLA1 Antibody (internal region) - Protein Information

Name ITGA1

Function

Integrin alpha-1/beta-1 is a receptor for laminin and collagen. It recognizes the proline-hydroxylated sequence G-F-P-G-E-R in collagen. Involved in anchorage-dependent,

negative regulation of EGF-stimulated cell growth.

Cellular Location

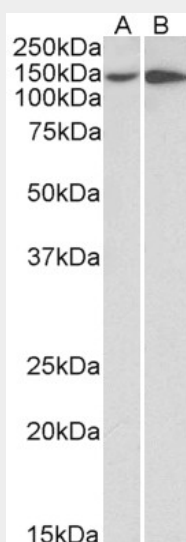
Membrane; Single-pass type I membrane protein.

Goat Anti-ITGA1 / VLA1 Antibody (internal region) - Protocols

Provided below are standard protocols that you may find useful for product applications.

- [Western Blot](#)
- [Blocking Peptides](#)
- [Dot Blot](#)
- [Immunohistochemistry](#)
- [Immunofluorescence](#)
- [Immunoprecipitation](#)
- [Flow Cytometry](#)
- [Cell Culture](#)

Goat Anti-ITGA1 / VLA1 Antibody (internal region) - Images



AF4202a (0.5 $\mu\text{g/ml}$) staining of HeLa (A) and HepG2 (B) lysates (35 μg protein in RIPA buffer). Primary incubation was 1 hour. Detected by chemiluminescence.

Goat Anti-ITGA1 / VLA1 Antibody (internal region) - References

Integrin alpha1beta1 (VLA-1) mediates adhesion of activated intraepithelial lymphocytes to collagen. Roberts AI, Brolin RE, Ebert EC. Immunology 1999 Aug 97 (4): 679-85.