

Goat Anti-MSI2 / musashi-2 Antibody (internal region)
Purified Goat Polyclonal Antibody
Catalog # AF4175a

Specification

Goat Anti-MSI2 / musashi-2 Antibody (internal region) - Product Information

Application	WB
Primary Accession	O96DH6
Other Accession	76626(mouse) , NP_620412.1 , NP_733839.1
Reactivity	Human
Predicted	Human, Mouse
Host	Goat
Clonality	Polyclonal
Concentration	0.5
Calculated MW	35197

Goat Anti-MSI2 / musashi-2 Antibody (internal region) - Additional Information

Gene ID 124540

Other Names

MSI2; musashi RNA-binding protein 2; MSI2H; RNA-binding protein Musashi homolog 2; musashi homolog 2; musashi-2

Format

Supplied at 0.5 mg/ml in Tris saline, 0.02% sodium azide, pH7.3 with 0.5% bovine serum albumin. Aliquot and store at -20°C. Minimize freezing and thawing.

Immunogen

Peptide with sequence C-SPDSLRYFSK, from the internal region of the protein sequence according to [NP_620412.1](#); [NP_733839.1](#).

Storage

Maintain refrigerated at 2-8°C for up to 6 months. For long term storage store at -20°C in small aliquots to prevent freeze-thaw cycles.

Precautions

Goat Anti-MSI2 / musashi-2 Antibody (internal region) is for research use only and not for use in diagnostic or therapeutic procedures.

Goat Anti-MSI2 / musashi-2 Antibody (internal region) - Protein Information

Name MSI2

Function

RNA binding protein that regulates the expression of target mRNAs at the translation level. May play a role in the proliferation and maintenance of stem cells in the central nervous system (By

similarity).

Cellular Location

Cytoplasm. Note=Associated with polysomes.

Tissue Location

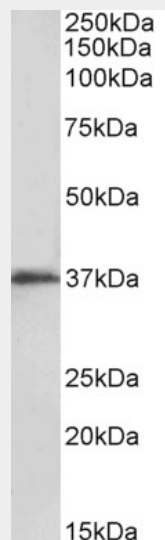
Ubiquitous; detected at low levels.

Goat Anti-MSI2 / musashi-2 Antibody (internal region) - Protocols

Provided below are standard protocols that you may find useful for product applications.

- [Western Blot](#)
- [Blocking Peptides](#)
- [Dot Blot](#)
- [Immunohistochemistry](#)
- [Immunofluorescence](#)
- [Immunoprecipitation](#)
- [Flow Cytometry](#)
- [Cell Culture](#)

Goat Anti-MSI2 / musashi-2 Antibody (internal region) - Images



AF4175a (0.1 µg/ml) staining of Kelly lysate (35 µg protein in RIPA buffer). Primary incubation was 1 hour. Detected by chemiluminescence.

Goat Anti-MSI2 / musashi-2 Antibody (internal region) - References

Rna-binding protein Musashi2: developmentally regulated expression in neural precursor cells and subpopulations of neurons in mammalian CNS. Sakakibara S, Nakamura Y, Satoh H, Okano H. The Journal of neuroscience : the official journal of the Society for Neuroscience 2001 Oct 21 (20): 8091-107.