

Goat Anti-ITGB2 / LFA-1 Antibody (internal region)
Purified Goat Polyclonal Antibody
Catalog # AF4173a

Specification

Goat Anti-ITGB2 / LFA-1 Antibody (internal region) - Product Information

Application	WB
Primary Accession	P05107
Other Accession	NP_000202.2
Reactivity	Human
Predicted	Human
Host	Goat
Clonality	Polyclonal
Concentration	0.5
Calculated MW	84791

Goat Anti-ITGB2 / LFA-1 Antibody (internal region) - Additional Information

Gene ID 3689

Other Names

ITGB2; integrin, beta 2 (complement component 3 receptor 3 and 4 subunit); CD18; LAD; LCAMB; LFA-1; MAC-1; MF17; MFI7; cell surface adhesion glycoprotein LFA-1/CR3/P150, 959 beta subunit precursor); cell surface adhesion glycoproteins LFA-1/CR3/p150, 95 subunit beta; complement receptor C3 beta-subunit; complement receptor C3 subunit beta; integrin beta chain, beta 2; integrin beta-2; leukocyte cell adhesion molecule CD18; leukocyte-associated antigens CD18/11A, CD18/11B, CD18/11C

Format

Supplied at 0.5 mg/ml in Tris saline, 0.02% sodium azide, pH7.3 with 0.5% bovine serum albumin. Aliquot and store at -20°C. Minimize freezing and thawing.

Immunogen

Peptide with sequence C-ETQEDHNGGQKQLS, from the internal region of the protein sequence according to NP_000202.2.

Storage

Maintain refrigerated at 2-8°C for up to 6 months. For long term storage store at -20°C in small aliquots to prevent freeze-thaw cycles.

Precautions

Goat Anti-ITGB2 / LFA-1 Antibody (internal region) is for research use only and not for use in diagnostic or therapeutic procedures.

Goat Anti-ITGB2 / LFA-1 Antibody (internal region) - Protein Information

Name ITGB2

Synonyms CD18, MFI7

Function

Integrin ITGAL/ITGB2 is a receptor for ICAM1, ICAM2, ICAM3 and ICAM4. Integrin ITGAL/ITGB2 is also a receptor for the secreted form of ubiquitin-like protein ISG15; the interaction is mediated by ITGAL (PubMed: [29100055](http://www.uniprot.org/citations/29100055)). Integrins ITGAM/ITGB2 and ITGAX/ITGB2 are receptors for the iC3b fragment of the third complement component and for fibrinogen. Integrin ITGAX/ITGB2 recognizes the sequence G-P-R in fibrinogen alpha-chain. Integrin ITGAM/ITGB2 recognizes P1 and P2 peptides of fibrinogen gamma chain. Integrin ITGAM/ITGB2 is also a receptor for factor X. Integrin ITGAD/ITGB2 is a receptor for ICAM3 and VCAM1. Contributes to natural killer cell cytotoxicity (PubMed: [15356110](http://www.uniprot.org/citations/15356110)). Involved in leukocyte adhesion and transmigration of leukocytes including T-cells and neutrophils (PubMed: [11812992](http://www.uniprot.org/citations/11812992)), PubMed: [28807980](http://www.uniprot.org/citations/28807980)). Triggers neutrophil transmigration during lung injury through PTK2B/PYK2-mediated activation (PubMed: [18587400](http://www.uniprot.org/citations/18587400)). Integrin ITGAL/ITGB2 in association with ICAM3, contributes to apoptotic neutrophil phagocytosis by macrophages (PubMed: [23775590](http://www.uniprot.org/citations/23775590)). In association with alpha subunit ITGAM/CD11b, required for CD177-PRTN3- mediated activation of TNF primed neutrophils (PubMed: [21193407](http://www.uniprot.org/citations/21193407)).

Cellular Location

Cell membrane; Single-pass type I membrane protein. Membrane raft; Single-pass type I membrane protein

Tissue Location

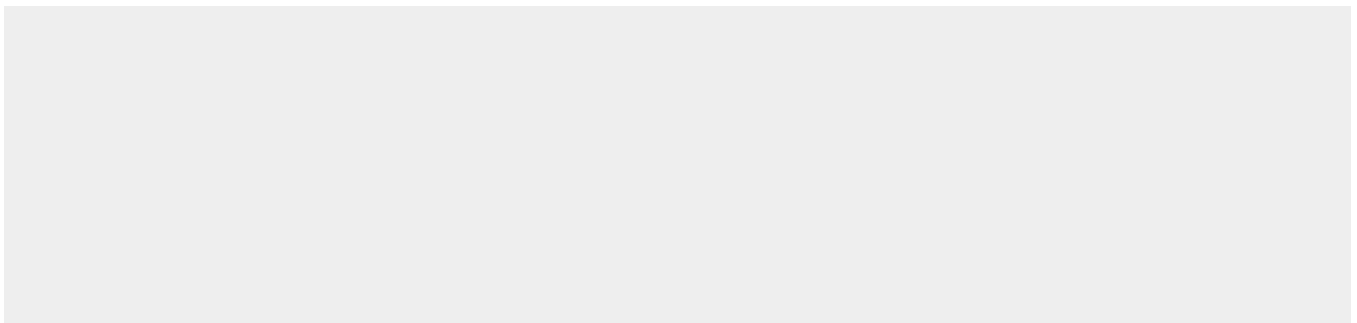
Leukocytes (PubMed:23775590). Expressed in neutrophils (at protein level) (PubMed:21193407, PubMed:28807980)

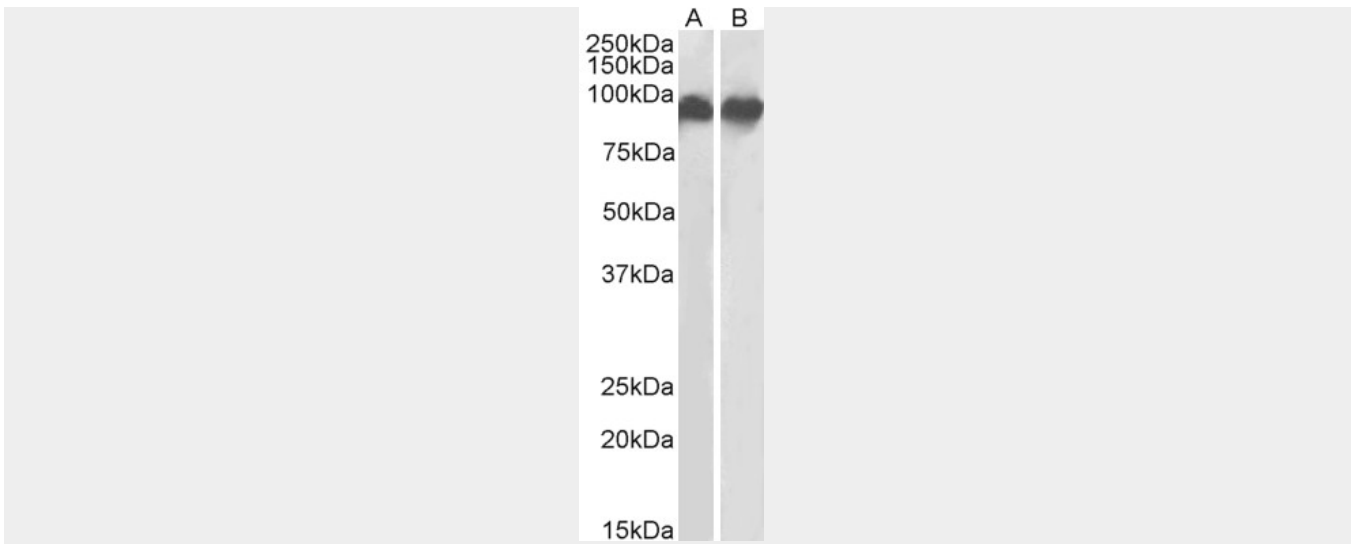
Goat Anti-ITGB2 / LFA-1 Antibody (internal region) - Protocols

Provided below are standard protocols that you may find useful for product applications.

- [Western Blot](#)
- [Blocking Peptides](#)
- [Dot Blot](#)
- [Immunohistochemistry](#)
- [Immunofluorescence](#)
- [Immunoprecipitation](#)
- [Flow Cytometry](#)
- [Cell Culture](#)

Goat Anti-ITGB2 / LFA-1 Antibody (internal region) - Images





AF4173a (0.3 $\mu\text{g/ml}$) staining of K562 (A) and U937 (B) lysates (35 μg protein in RIPA buffer). Primary incubation was 1 hour. Detected by chemiluminescence.

Goat Anti-ITGB2 / LFA-1 Antibody (internal region) - References

Regulation of conformer-specific activation of the integrin LFA-1 by a chemokine-triggered Rho signaling module. Bolomini-Vittori M, Montresor A, Giagulli C, Staunton D, Rossi B, Martinello M, Constantin G, Laudanna C. *Nature immunology* 2009 Feb 10 (2): 185-94.