

Goat Anti-ROR1 Antibody (C-Terminus (near))
Purified Goat Polyclonal Antibody
Catalog # AF4153a**Specification**

Goat Anti-ROR1 Antibody (C-Terminus (near)) - Product Information

Application	IHC-P
Primary Accession	Q01973
Other Accession	26563(mouse) , 362550(rat) , NP_005003.2
Reactivity	Human
Predicted	Human, Mouse, Rat
Host	Goat
Clonality	Polyclonal
Concentration	0.5
Calculated MW	104283

Goat Anti-ROR1 Antibody (C-Terminus (near)) - Additional Information**Gene ID** 4919**Other Names**ROR1; receptor tyrosine kinase-like orphan receptor 1; MGC99659; NTRKR1; dj537F10.1;
neurotrophic tyrosine kinase receptor-related 1**Format**Supplied at 0.5 mg/ml in Tris saline, 0.02% sodium azide, pH7.3 with 0.5% bovine serum albumin.
Aliquot and store at -20°C. Minimize freezing and thawing.**Immunogen**Peptide with sequence C-GNKSQKPYKIDSKQA, from the C-Terminus (near) of the protein sequence
according to NP_005003.2.**Storage**Maintain refrigerated at 2-8°C for up to 6 months. For long term storage store at -20°C in small
aliquots to prevent freeze-thaw cycles.**Precautions**Goat Anti-ROR1 Antibody (C-Terminus (near)) is for research use only and not for use in diagnostic
or therapeutic procedures.**Goat Anti-ROR1 Antibody (C-Terminus (near)) - Protein Information****Name** ROR1**Synonyms** NTRKR1**Function**

Has very low kinase activity in vitro and is unlikely to function as a tyrosine kinase in vivo (PubMed:25029443). Receptor for ligand WNT5A which activate downstream NFkB signaling pathway and may result in the inhibition of WNT3A-mediated signaling (PubMed:25029443, PubMed:27162350). In inner ear, crucial for spiral ganglion neurons to innervate auditory hair cells (PubMed:27162350). Via IGFBP5 ligand, forms a complex with ERBB2 to enhance CREB oncogenic signaling (PubMed:36949068).

Cellular Location

Membrane; Single-pass type I membrane protein. Cell projection, axon {ECO:0000250|UniProtKB:Q9Z139}

Tissue Location

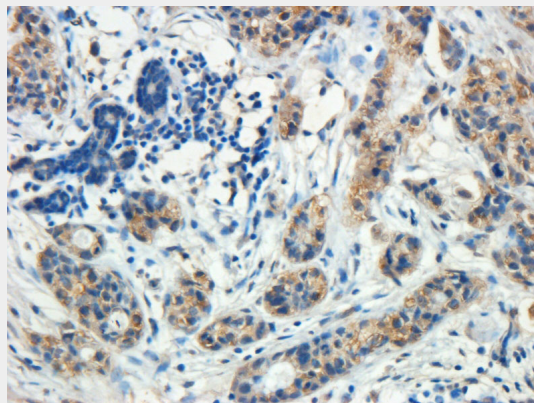
Expressed strongly in human heart, lung and kidney, but weakly in the CNS. Isoform Short is strongly expressed in fetal and adult CNS and in a variety of human cancers, including those originating from CNS or PNS neuroectoderm

Goat Anti-ROR1 Antibody (C-Terminus (near)) - Protocols

Provided below are standard protocols that you may find useful for product applications.

- [Western Blot](#)
- [Blocking Peptides](#)
- [Dot Blot](#)
- [Immunohistochemistry](#)
- [Immunofluorescence](#)
- [Immunoprecipitation](#)
- [Flow Cytometry](#)
- [Cell Culture](#)

Goat Anti-ROR1 Antibody (C-Terminus (near)) - Images



AF4153a (5 µg/ml) staining of paraffin embedded Human Breast cancer. Heated antigen retrieval with citrate buffer pH 6, DAB-staining.

Goat Anti-ROR1 Antibody (C-Terminus (near)) - References

MiR-15a and miR-16-1 cluster functions in human leukemia. Calin GA, Cimmino A, Fabbri M, Ferracin M, Wojcik SE, Shimizu M, Taccioli C, Zanesi N, Garzon R, Aqeilan RI, Alder H, Volinia S,

Rassenti L, Liu X, Liu CG, Kipps TJ, Negrini M, Croce CM. Proc Natl Acad Sci U S A. 2008 Apr 1;105(13):5166-71. Epub 2008 Mar 24.