

GSTO1 Antibody (internal region near C-Term)
Peptide-affinity purified goat antibody
Catalog # AF4099a

Specification

GSTO1 Antibody (internal region near C-Term) - Product Information

Application	WB
Primary Accession	P78417
Other Accession	NP_004823.1 , NP_001177931.1 , NP_001177932.1 , 9446
Reactivity	Human
Host	Goat
Clonality	Polyclonal
Concentration	0.5 mg/ml
Isotype	IgG
Calculated MW	27566

GSTO1 Antibody (internal region near C-Term) - Additional Information

Gene ID 9446

Other Names

Glutathione S-transferase omega-1, GSTO-1, 2.5.1.18, Glutathione S-transferase omega 1-1, GSTO 1-1, Glutathione-dependent dehydroascorbate reductase, 1.8.5.1, Monomethylarsonic acid reductase, MMA(V) reductase, 1.20.4.2, S-(Phenacyl)glutathione reductase, SPG-R, GSTO1, GSTTLP28

Format

0.5 mg/ml in Tris saline, 0.02% sodium azide, pH7.3 with 0.5% bovine serum albumin

Storage

Maintain refrigerated at 2-8°C for up to 6 months. For long term storage store at -20°C in small aliquots to prevent freeze-thaw cycles.

Precautions

GSTO1 Antibody (internal region near C-Term) is for research use only and not for use in diagnostic or therapeutic procedures.

GSTO1 Antibody (internal region near C-Term) - Protein Information

Name GSTO1

Synonyms GSTTLP28

Function

Exhibits glutathione-dependent thiol transferase and dehydroascorbate reductase activities. Has S-(phenacyl)glutathione reductase activity. Has also glutathione S-transferase activity. Participates

in the biotransformation of inorganic arsenic and reduces monomethylarsonic acid (MMA) and dimethylarsonic acid.

Cellular Location

Cytoplasm, cytosol.

Tissue Location

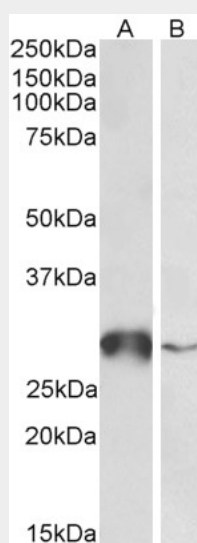
Ubiquitous. Highest expression in liver, pancreas, skeletal muscle, spleen, thymus, colon, blood leukocyte and heart. Lowest expression in brain, placenta and lung.

GSTO1 Antibody (internal region near C-Term) - Protocols

Provided below are standard protocols that you may find useful for product applications.

- [Western Blot](#)
- [Blocking Peptides](#)
- [Dot Blot](#)
- [Immunohistochemistry](#)
- [Immunofluorescence](#)
- [Immunoprecipitation](#)
- [Flow Cytometry](#)
- [Cell Culture](#)

GSTO1 Antibody (internal region near C-Term) - Images



AF4099a (0.5 µg/ml) staining of Human Liver (A) and Peripheral Blood Lymphocytes (B) lysates (35 µg protein in RIPA buffer). Primary incubation was 1 hour. Detected by chemiluminescence.

GSTO1 Antibody (internal region near C-Term) - Background

This antibody is expected to recognize all reported isoforms (NP_004823.1; NP_001177931.1; NP_001177932.1).

GSTO1 Antibody (internal region near C-Term) - References

Structural insights into the dehydroascorbate reductase activity of human omega-class glutathione transferases. Zhou H, Brock J, Liu D, Board PG, Oakley AJ. Journal of molecular biology 2012 Jul 420

(3): 190-203. PMID: 22522127