

**LDHB Antibody (internal region, near C-Term)**  
Peptide-affinity purified goat antibody  
Catalog # AF4088a

### Specification

---

#### LDHB Antibody (internal region, near C-Term) - Product Information

Application	WB
Primary Accession	<a href="#">P07195</a>
Other Accession	<a href="#">NP_002291.1</a> , <a href="#">3945</a> , <a href="#">16832 (mouse)</a> , <a href="#">24534 (rat)</a>
Reactivity	Human, Mouse, Rat, Pig
Predicted	Dog
Host	Goat
Clonality	Polyclonal
Concentration	0.5 mg/ml
Isotype	IgG
Calculated MW	36638

#### LDHB Antibody (internal region, near C-Term) - Additional Information

Gene ID 3945

#### Other Names

L-lactate dehydrogenase B chain, LDH-B, 1.1.1.27, LDH heart subunit, LDH-H, Renal carcinoma antigen NY-REN-46, LDHB

#### Format

0.5 mg/ml in Tris saline, 0.02% sodium azide, pH7.3 with 0.5% bovine serum albumin

#### Storage

Maintain refrigerated at 2-8°C for up to 6 months. For long term storage store at -20°C in small aliquots to prevent freeze-thaw cycles.

#### Precautions

LDHB Antibody (internal region, near C-Term) is for research use only and not for use in diagnostic or therapeutic procedures.

#### LDHB Antibody (internal region, near C-Term) - Protein Information

Name LDHB

#### Function

Interconverts simultaneously and stereospecifically pyruvate and lactate with concomitant interconversion of NADH and NAD(+).

#### Cellular Location

Cytoplasm. Mitochondrion inner membrane; Peripheral membrane protein

### Tissue Location

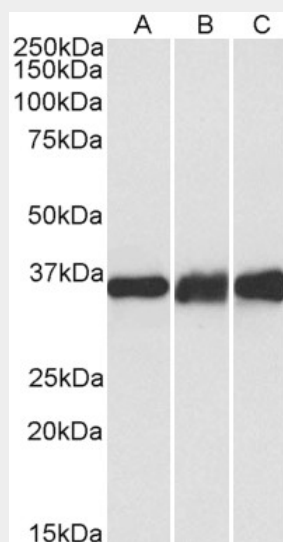
Predominantly expressed in aerobic tissues such as cardiac muscle.

### LDHB Antibody (internal region, near C-Term) - Protocols

Provided below are standard protocols that you may find useful for product applications.

- [Western Blot](#)
- [Blocking Peptides](#)
- [Dot Blot](#)
- [Immunohistochemistry](#)
- [Immunofluorescence](#)
- [Immunoprecipitation](#)
- [Flow Cytometry](#)
- [Cell Culture](#)

### LDHB Antibody (internal region, near C-Term) - Images



AF4088a (0.1 µg/ml) staining of Human (A), Mouse (B) and Rat (C) Heart lysates (35 µg protein in RIPA buffer). Primary incubation was 1 hour. Detected by chemiluminescence.

### LDHB Antibody (internal region, near C-Term) - Background

Reported variants represent identical protein: NP\_002291.1, NP\_001167568.1.

### LDHB Antibody (internal region, near C-Term) - References

Decreased lactate dehydrogenase B expression enhances claudin 1-mediated hepatoma cell invasiveness via mitochondrial defects. Kim JH, Kim EL, Lee YK, Park CB, Kim BW, Wang HJ, Yoon CH, Lee SJ, Yoon G. Experimental cell research 2011 May 317 (8): 1108-18. PMID: 21356207

### LDHB Antibody (internal region, near C-Term) - Citations

- [The cellular and compartmental profile of mouse retinal glycolysis, tricarboxylic acid cycle, oxidative phosphorylation, and ~P transferring kinases.](#)