

**ALDOA (aa86-96) Antibody (internal region)**  
Peptide-affinity purified goat antibody  
Catalog # AF4085a

**Specification**

---

**ALDOA (aa86-96) Antibody (internal region) - Product Information**

Application	WB
Primary Accession	<a href="#">P04075</a>
Other Accession	<a href="#">NP_000025.1</a> , <a href="#">NP_001230106.1</a> , <a href="#">226</a> , <a href="#">11674</a> (mouse), <a href="#">24189</a> (rat)
Reactivity	Human, Mouse, Rat
Host	Goat
Clonality	Polyclonal
Concentration	0.5 mg/ml
Isotype	IgG
Calculated MW	39420

**ALDOA (aa86-96) Antibody (internal region) - Additional Information**

Gene ID 226

**Other Names**

Fructose-bisphosphate aldolase A, 4.1.2.13, Lung cancer antigen NY-LU-1, Muscle-type aldolase, ALDOA, ALDA

**Format**

0.5 mg/ml in Tris saline, 0.02% sodium azide, pH7.3 with 0.5% bovine serum albumin

**Storage**

Maintain refrigerated at 2-8°C for up to 6 months. For long term storage store at -20°C in small aliquots to prevent freeze-thaw cycles.

**Precautions**

ALDOA (aa86-96) Antibody (internal region) is for research use only and not for use in diagnostic or therapeutic procedures.

**ALDOA (aa86-96) Antibody (internal region) - Protein Information**

Name ALDOA ([HGNC:414](#))

Synonyms ALDA

**Function**

Catalyzes the reversible conversion of beta-D-fructose 1,6- bisphosphate (FBP) into two triose phosphate and plays a key role in glycolysis and gluconeogenesis (PubMed:<a href="http://www.uniprot.org/citations/14766013" target="\_blank">14766013</a>). In addition, may also function as scaffolding protein (By similarity).

### Cellular Location

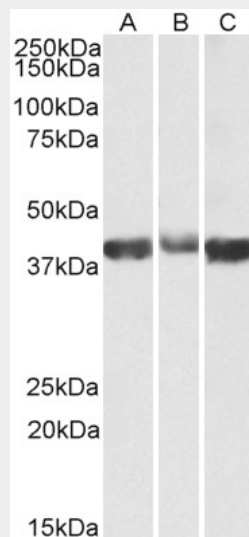
Cytoplasm, myofibril, sarcomere, I band {ECO:0000250|UniProtKB:P00883}. Cytoplasm, myofibril, sarcomere, M line {ECO:0000250|UniProtKB:P00883}. Note=In skeletal muscle, accumulates around the M line and within the I band, colocalizing with FBP2 on both sides of the Z line in the absence of Ca(2+) {ECO:0000250|UniProtKB:P00883}

### ALDOA (aa86-96) Antibody (internal region) - Protocols

Provided below are standard protocols that you may find useful for product applications.

- [Western Blot](#)
- [Blocking Peptides](#)
- [Dot Blot](#)
- [Immunohistochemistry](#)
- [Immunofluorescence](#)
- [Immunoprecipitation](#)
- [Flow Cytometry](#)
- [Cell Culture](#)

### ALDOA (aa86-96) Antibody (internal region) - Images



AF4085a (0.03 µg/ml) staining of Human (A), Mouse (B) and Rat (C) Skeletal Muscle lysates (35 µg protein in RIPA buffer). Primary incubation was 1 hour. Detected by chemiluminescence.

### ALDOA (aa86-96) Antibody (internal region) - Background

This antibody is expected to recognize both reported isoforms (P\_000025.1; NP\_001230106.1). Reported variants represent identical protein: NP\_908930.1, NP\_908932.1, NP\_001121089.1, NP\_000025.1.

### ALDOA (aa86-96) Antibody (internal region) - References

Human aldolase A natural mutants: relationship between flexibility of the C-terminal region and enzyme function. Esposito G, Vitagliano L, Costanzo P, Borrelli L, Barone R, Pavone L, Izzo P, Zagari A, Salvatore F. The Biochemical journal 2004 May 380 (Pt 1): 51-6. PMID: 14766013