

alpha-1-antichymotrypsin (aa222-236) Antibody (internal region)
Peptide-affinity purified goat antibody
Catalog # AF4073a

Specification

alpha-1-antichymotrypsin (aa222-236) Antibody (internal region) - Product Information

Application	WB
Primary Accession	P01011
Other Accession	NP_001076.2 , 12
Reactivity	Human
Host	Goat
Clonality	Polyclonal
Concentration	0.5 mg/ml
Isotype	IgG
Calculated MW	47651

alpha-1-antichymotrypsin (aa222-236) Antibody (internal region) - Additional Information

Gene ID 12

Other Names

Alpha-1-antichymotrypsin, ACT, Cell growth-inhibiting gene 24/25 protein, Serpin A3, Alpha-1-antichymotrypsin His-Pro-less, SERPINA3, AACT

Format

0.5 mg/ml in Tris saline, 0.02% sodium azide, pH7.3 with 0.5% bovine serum albumin

Storage

Maintain refrigerated at 2-8°C for up to 6 months. For long term storage store at -20°C in small aliquots to prevent freeze-thaw cycles.

Precautions

alpha-1-antichymotrypsin (aa222-236) Antibody (internal region) is for research use only and not for use in diagnostic or therapeutic procedures.

alpha-1-antichymotrypsin (aa222-236) Antibody (internal region) - Protein Information

Name SERPINA3

Synonyms AACT

Function

Although its physiological function is unclear, it can inhibit neutrophil cathepsin G and mast cell chymase, both of which can convert angiotensin-1 to the active angiotensin-2.

Cellular Location

Secreted.

Tissue Location

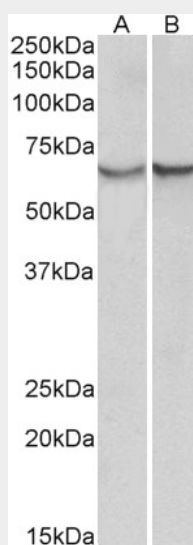
Plasma. Synthesized in the liver. Like the related alpha-1-antitrypsin, its concentration increases in the acute phase of inflammation or infection. Found in the amyloid plaques from the hippocampus of Alzheimer disease brains.

alpha-1-antichymotrypsin (aa222-236) Antibody (internal region) - Protocols

Provided below are standard protocols that you may find useful for product applications.

- [Western Blot](#)
- [Blocking Peptides](#)
- [Dot Blot](#)
- [Immunohistochemistry](#)
- [Immunofluorescence](#)
- [Immunoprecipitation](#)
- [Flow Cytometry](#)
- [Cell Culture](#)

alpha-1-antichymotrypsin (aa222-236) Antibody (internal region) - Images



AF4073a (0.3 $\mu\text{g/ml}$) staining of albumin-depleted Serum (A) and Plasma(B) lysates (35 μg protein in RIPA buffer). Primary incubation was 1 hour. Detected by chemiluminescence.

alpha-1-antichymotrypsin (aa222-236) Antibody (internal region) - References

Pivotal role for alpha1-antichymotrypsin in skin repair. Hoffmann DC, Textoris C, Oehme F, Klaassen T, Goppelt A, Römer A, Fugmann B, Davidson JM, Werner S, Krieg T, Eming SA. The Journal of biological chemistry 2011 Aug 286 (33): 28889-901. PMID: 21693707