

**C9 (aa205-216) Antibody (internal region)**  
Peptide-affinity purified goat antibody  
Catalog # AF4072a

### Specification

---

#### C9 (aa205-216) Antibody (internal region) - Product Information

Application	WB
Primary Accession	<a href="#">P02748</a>
Other Accession	<a href="#">NP_001728.1</a> , <a href="#">735</a>
Reactivity	Human
Host	Goat
Clonality	Polyclonal
Concentration	0.5 mg/ml
Isotype	IgG
Calculated MW	63173

#### C9 (aa205-216) Antibody (internal region) - Additional Information

Gene ID 735

#### Other Names

Complement component C9, Complement component C9a, Complement component C9b, C9

#### Format

0.5 mg/ml in Tris saline, 0.02% sodium azide, pH7.3 with 0.5% bovine serum albumin

#### Storage

Maintain refrigerated at 2-8°C for up to 6 months. For long term storage store at -20°C in small aliquots to prevent freeze-thaw cycles.

#### Precautions

C9 (aa205-216) Antibody (internal region) is for research use only and not for use in diagnostic or therapeutic procedures.

#### C9 (aa205-216) Antibody (internal region) - Protein Information

Name C9

#### Function

Constituent of the membrane attack complex (MAC) that plays a key role in the innate and adaptive immune response by forming pores in the plasma membrane of target cells (PubMed: [26841934](http://www.uniprot.org/citations/26841934), PubMed: [9212048](http://www.uniprot.org/citations/9212048), PubMed: [9634479](http://www.uniprot.org/citations/9634479)). C9 is the pore-forming subunit of the MAC (PubMed: [26841934](http://www.uniprot.org/citations/26841934), PubMed: [30111885](http://www.uniprot.org/citations/30111885), PubMed: [4055801](http://www.uniprot.org/citations/4055801))

target="\_blank">4055801</a>).

#### Cellular Location

Secreted. Target cell membrane; Multi-pass membrane protein. Note=Secreted as soluble monomer Oligomerizes at target membranes, forming a pre-pore. A conformation change then leads to the formation of a 100 Angstrom diameter pore

#### Tissue Location

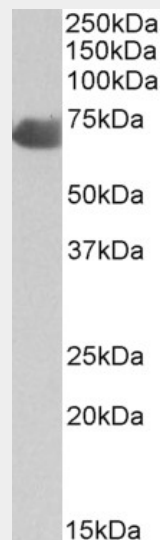
Plasma (at protein level).

### C9 (aa205-216) Antibody (internal region) - Protocols

Provided below are standard protocols that you may find useful for product applications.

- [Western Blot](#)
- [Blocking Peptides](#)
- [Dot Blot](#)
- [Immunohistochemistry](#)
- [Immunofluorescence](#)
- [Immunoprecipitation](#)
- [Flow Cytometry](#)
- [Cell Culture](#)

### C9 (aa205-216) Antibody (internal region) - Images



AF4072a (2 µg/ml) staining of Human Placenta lysate (35 µg protein in RIPA buffer). Primary incubation was 1 hour. Detected by chemiluminescence.

### C9 (aa205-216) Antibody (internal region) - References

Mapping the intermedilysin-human CD59 receptor interface reveals a deep correspondence with the binding site on CD59 for complement binding proteins C8alpha and C9. Wickham SE, Hotze EM, Farrand AJ, Polekhina G, Nero TL, Tomlinson S, Parker MW, Tweten RK. The Journal of biological chemistry 2011 Jun 286 (23): 20952-62. PMID: 21507937