

syndecan 1 / CD138 Antibody (internal region)
Peptide-affinity purified goat antibody
Catalog # AF4068a

Specification

syndecan 1 / CD138 Antibody (internal region) - Product Information

Application	WB
Primary Accession	P18827
Other Accession	NP_002988.3 , 6382
Reactivity	Human
Host	Goat
Clonality	Polyclonal
Concentration	0.5 mg/ml
Isotype	IgG
Calculated MW	32462

syndecan 1 / CD138 Antibody (internal region) - Additional Information

Gene ID 6382

Other Names

Syndecan-1, SYND1, CD138, SDC1, SDC

Format

0.5 mg/ml in Tris saline, 0.02% sodium azide, pH7.3 with 0.5% bovine serum albumin

Storage

Maintain refrigerated at 2-8°C for up to 6 months. For long term storage store at -20°C in small aliquots to prevent freeze-thaw cycles.

Precautions

syndecan 1 / CD138 Antibody (internal region) is for research use only and not for use in diagnostic or therapeutic procedures.

syndecan 1 / CD138 Antibody (internal region) - Protein Information

Name SDC1 ([HGNC:10658](#))

Synonyms SDC

Function

Cell surface proteoglycan that contains both heparan sulfate and chondroitin sulfate and that links the cytoskeleton to the interstitial matrix (By similarity). Regulates exosome biogenesis in concert with SDCBP and PDCD6IP (PubMed:22660413). Able to induce its own expression in dental mesenchymal cells and also in the neighboring dental epithelial cells via an MSX1-mediated pathway (By similarity).

Cellular Location

Membrane; Single-pass type I membrane protein. Secreted Secreted, extracellular exosome
Note=Shedding of the ectodomain produces a soluble form

Tissue Location

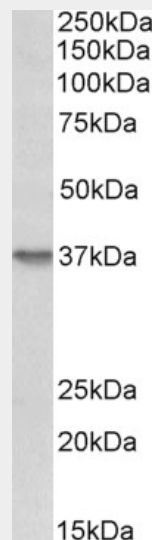
Detected in placenta (at protein level) (PubMed:32337544). Detected in fibroblasts (at protein level) (PubMed:36213313).

syndecan 1 / CD138 Antibody (internal region) - Protocols

Provided below are standard protocols that you may find useful for product applications.

- [Western Blot](#)
- [Blocking Peptides](#)
- [Dot Blot](#)
- [Immunohistochemistry](#)
- [Immunofluorescence](#)
- [Immunoprecipitation](#)
- [Flow Cytometry](#)
- [Cell Culture](#)

syndecan 1 / CD138 Antibody (internal region) - Images



AF4068a (1 µg/ml) staining of HepG2 lysate (35 µg protein in RIPA buffer). Primary incubation was 1 hour. Detected by chemiluminescence.

syndecan 1 / CD138 Antibody (internal region) - Background

Reported variants represent identical protein: NP_001006947.1, NP_002988.3.

syndecan 1 / CD138 Antibody (internal region) - References

Removal of syndecan-1 promotes TRAIL-induced apoptosis in myeloma cells. Wu YH, Yang CY, Chien WL, Lin KI, Lai MZ. Journal of immunology (Baltimore, Md. : 1950) 2012 Mar 188 (6): 2914-21. PMID: 22308310