

**CD38 (aa226-237) Antibody (internal region)**  
Peptide-affinity purified goat antibody  
Catalog # AF4067a

**Specification**

---

**CD38 (aa226-237) Antibody (internal region) - Product Information**

Application	WB
Primary Accession	<a href="#">P28907</a>
Other Accession	<a href="#">NP_001766.2</a> , <a href="#">952</a>
Reactivity	Human
Host	Goat
Clonality	Polyclonal
Concentration	0.5 mg/ml
Isotype	IgG
Calculated MW	34328

**CD38 (aa226-237) Antibody (internal region) - Additional Information**

Gene ID 952

**Other Names**

ADP-ribosyl cyclase/cyclic ADP-ribose hydrolase 1, 3.2.2.6, 2'-phospho-ADP-ribosyl cyclase, 2'-phospho-ADP-ribosyl cyclase/2'-phospho-cyclic-ADP-ribose transferase, 2.4.99.20, 2'-phospho-cyclic-ADP-ribose transferase, ADP-ribosyl cyclase 1, ADPRC 1, Cyclic ADP-ribose hydrolase 1, cADPr hydrolase 1, T10, CD38, CD38

**Format**

0.5 mg/ml in Tris saline, 0.02% sodium azide, pH7.3 with 0.5% bovine serum albumin

**Storage**

Maintain refrigerated at 2-8°C for up to 6 months. For long term storage store at -20°C in small aliquots to prevent freeze-thaw cycles.

**Precautions**

CD38 (aa226-237) Antibody (internal region) is for research use only and not for use in diagnostic or therapeutic procedures.

**CD38 (aa226-237) Antibody (internal region) - Protein Information**

Name CD38

**Function**

Synthesizes cyclic ADP-ribose (cADPR), a second messenger for glucose-induced insulin secretion (PubMed:<a href="http://www.uniprot.org/citations/7961800" target="\_blank">7961800</a>, PubMed:<a href="http://www.uniprot.org/citations/8253715" target="\_blank">8253715</a>). Synthesizes the Ca(2+) mobilizer nicotinate-adenine dinucleotide phosphate, NAADP(+), from 2'-phospho-cADPR and nicotinic acid, as well as from NADP(+) and nicotinic acid. At both pH 5.0

and pH 7.4 preferentially transforms 2'-phospho-cADPR into NAADP(+), while preferentially cleaving NADP(+) to cADPR and ADPRP rather than into NADDP(+) (PubMed:<a href="http://www.uniprot.org/citations/16690024" target="\_blank">16690024</a>). Has cADPR hydrolase activity (PubMed:<a href="http://www.uniprot.org/citations/7961800" target="\_blank">7961800</a>, PubMed:<a href="http://www.uniprot.org/citations/8253715" target="\_blank">8253715</a>).

#### Cellular Location

Cell surface. Membrane; Single-pass type II membrane protein

#### Tissue Location

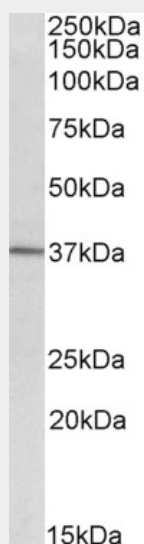
Expressed at high levels in pancreas, liver, kidney, brain, testis, ovary, placenta, malignant lymphoma and neuroblastoma.

### CD38 (aa226-237) Antibody (internal region) - Protocols

Provided below are standard protocols that you may find useful for product applications.

- [Western Blot](#)
- [Blocking Peptides](#)
- [Dot Blot](#)
- [Immunohistochemistry](#)
- [Immunofluorescence](#)
- [Immunoprecipitation](#)
- [Flow Cytometry](#)
- [Cell Culture](#)

### CD38 (aa226-237) Antibody (internal region) - Images



AF4067a (2 µg/ml) staining of Human Spinal Cord cancer lysate (35 µg protein in RIPA buffer). Primary incubation was 1 hour. Detected by chemiluminescence.

### CD38 (aa226-237) Antibody (internal region) - References

CD38: a NAADP degrading enzyme. Schmid F, Bruhn S, Weber K, Mittrücker HW, Guse AH. FEBS letters 2011 Nov 585 (22): 3544-8. PMID: 22020217