

MAP2K2 / MEK2 Antibody (internal region)
Peptide-affinity purified goat antibody
Catalog # AF4050a

Specification

MAP2K2 / MEK2 Antibody (internal region) - Product Information

Application	WB
Primary Accession	P36507
Other Accession	NP_109587.1 , 5605
Reactivity	Human
Host	Goat
Clonality	Polyclonal
Concentration	0.5 mg/ml
Isotype	IgG
Calculated MW	44424

MAP2K2 / MEK2 Antibody (internal region) - Additional Information

Gene ID 5605

Other Names

Dual specificity mitogen-activated protein kinase kinase 2, MAP kinase kinase 2, MAPKK 2, 2.7.12.2, ERK activator kinase 2, MAPK/ERK kinase 2, MEK 2, MAP2K2, MEK2, MKK2, PRKMK2

Format

0.5 mg/ml in Tris saline, 0.02% sodium azide, pH7.3 with 0.5% bovine serum albumin

Storage

Maintain refrigerated at 2-8°C for up to 6 months. For long term storage store at -20°C in small aliquots to prevent freeze-thaw cycles.

Precautions

MAP2K2 / MEK2 Antibody (internal region) is for research use only and not for use in diagnostic or therapeutic procedures.

MAP2K2 / MEK2 Antibody (internal region) - Protein Information

Name MAP2K2

Synonyms MEK2, MKK2, PRKMK2

Function

Catalyzes the concomitant phosphorylation of a threonine and a tyrosine residue in a Thr-Glu-Tyr sequence located in MAP kinases. Activates the ERK1 and ERK2 MAP kinases (By similarity). Activates BRAF in a KSR1 or KSR2-dependent manner; by binding to KSR1 or KSR2 releases the inhibitory intramolecular interaction between KSR1 or KSR2 protein kinase and N-terminal domains which promotes KSR1 or KSR2-BRAF dimerization and BRAF activation (PubMed:29433126).

Cellular Location

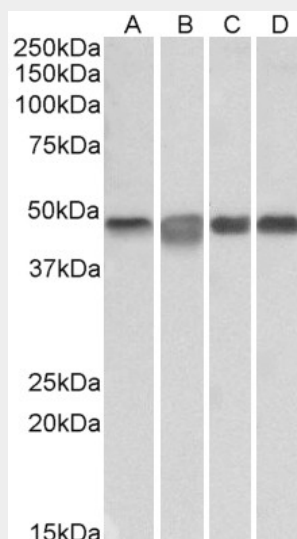
Cytoplasm. Membrane; Peripheral membrane protein. Note=Membrane localization is probably regulated by its interaction with KSR1.

MAP2K2 / MEK2 Antibody (internal region) - Protocols

Provided below are standard protocols that you may find useful for product applications.

- [Western Blot](#)
- [Blocking Peptides](#)
- [Dot Blot](#)
- [Immunohistochemistry](#)
- [Immunofluorescence](#)
- [Immunoprecipitation](#)
- [Flow Cytometry](#)
- [Cell Culture](#)

MAP2K2 / MEK2 Antibody (internal region) - Images



AF4050a (0.3 $\mu\text{g/ml}$) staining of Daudi (A), Jurkat (B), K562 (C) and Molt4 (D) lysates (35 μg protein in RIPA buffer). Primary incubation was 1 hour. Detected by chemiluminescence.

MAP2K2 / MEK2 Antibody (internal region) - References

Sef downregulation by Ras causes MEK1/2 to become aberrantly nuclear localized leading to polyploidy and neoplastic transformation. Duhamel S, Hébert J, Gaboury L, Bouchard A, Simon R, Sauter G, Basik M, Meloche S. Cancer Res. 2012 Feb 1;72(3):626-35. PMID: 22298595