

**alpha-1-antitrypsin (aa230-241) Antibody (internal region)**  
Peptide-affinity purified goat antibody  
Catalog # AF4045a

### Specification

---

### alpha-1-antitrypsin (aa230-241) Antibody (internal region) - Product Information

Application	WB
Primary Accession	<a href="#">P01009</a>
Other Accession	<a href="#">NP_000286.3</a> , <a href="#">5265</a>
Reactivity	Human
Host	Goat
Clonality	Polyclonal
Concentration	0.5 mg/ml
Isotype	IgG
Calculated MW	46737

### alpha-1-antitrypsin (aa230-241) Antibody (internal region) - Additional Information

Gene ID 5265

#### Other Names

Alpha-1-antitrypsin, Alpha-1 protease inhibitor, Alpha-1-antiproteinase, Serpin A1, Short peptide from AAT, SPAAT, SERPINA1, AAT, PI

#### Format

0.5 mg/ml in Tris saline, 0.02% sodium azide, pH7.3 with 0.5% bovine serum albumin

#### Storage

Maintain refrigerated at 2-8°C for up to 6 months. For long term storage store at -20°C in small aliquots to prevent freeze-thaw cycles.

#### Precautions

alpha-1-antitrypsin (aa230-241) Antibody (internal region) is for research use only and not for use in diagnostic or therapeutic procedures.

### alpha-1-antitrypsin (aa230-241) Antibody (internal region) - Protein Information

Name SERPINA1 ([HGNC:8941](#))

Synonyms AAT, PI

#### Function

Inhibitor of serine proteases. Its primary target is elastase, but it also has a moderate affinity for plasmin and thrombin. Irreversibly inhibits trypsin, chymotrypsin and plasminogen activator. The aberrant form inhibits insulin-induced NO synthesis in platelets, decreases coagulation time and has proteolytic activity against insulin and plasmin.

**Cellular Location**

Secreted. Endoplasmic reticulum. Note=The S and Z allele are not secreted effectively and accumulate intracellularly in the endoplasmic reticulum

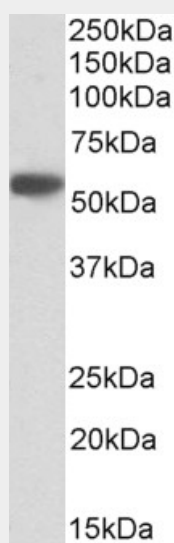
**Tissue Location**

Ubiquitous. Expressed in leukocytes and plasma.

**alpha-1-antitrypsin (aa230-241) Antibody (internal region) - Protocols**

Provided below are standard protocols that you may find useful for product applications.

- [Western Blot](#)
- [Blocking Peptides](#)
- [Dot Blot](#)
- [Immunohistochemistry](#)
- [Immunofluorescence](#)
- [Immunoprecipitation](#)
- [Flow Cytometry](#)
- [Cell Culture](#)

**alpha-1-antitrypsin (aa230-241) Antibody (internal region) - Images**

AF4045a (0.1 µg/ml) staining of Albumin-depleted Human Serum lysate (35 µg protein in RIPA buffer). Primary incubation was 1 hour. Detected by chemiluminescence.

**alpha-1-antitrypsin (aa230-241) Antibody (internal region) - Background**

Reported variants represent identical protein: NP\_001121174.1, NP\_001121179.1, NP\_001121172.1, NP\_001121177.1, NP\_001121178.1, NP\_001121176.1, NP\_001121175.1, NP\_000286.3, NP\_001121173.1, NP\_001002236.1, NP\_001002235.1.

**alpha-1-antitrypsin (aa230-241) Antibody (internal region) - References**

Folding mechanism of the metastable serpin  $\alpha$ 1-antitrypsin. Tsutsui Y, Dela Cruz R, Wintrobe PL. Proc Natl Acad Sci U S A. 2012 Mar 20;109(12):4467-72. PMID: 22392975